

ARMY TM 11-5895-410-40P
NAVY NAVELEX 0967-301-5640
AIR FORCE TO 31S5-2FYQ42-214

**GENERAL SUPPORT MAINTENANCE
REPAIR PARTS AND SPECIAL TOOLS LISTS
(INCLUDING DEPOT MAINTENANCE REPAIR PARTS AND SPECIAL TOOLS)
FOR
FILTER, ISOLATION, AND CONVERTER UNITS FOR
AUTOMATIC DIGITAL MESSAGE SWITCHING CENTERS
AN/FYQ 42(V)1 THROUGH
AN/FYQ 42(V)12 AND AN/FYQ 42(V)T1**

**DEPARTMENTS OF THE ARMY, THE NAVY, AND THE AIR FORCE
FEBRUARY 1974**

TECHNICAL MANUAL
D. 11-5895-410-40P
TECHNICAL MANUAL
NAVELEX 0967-301-5640
TECHNICAL ORDER
TO 31S5-2FYQ42-214

DEPARTMENTS OF THE ARMY
THE NAVY AND THE AIR FORCE
WASHINGTON DC 14 February 1974

GENERAL SUPPORT MAINTENANCE
REPAIR PARTS AND SPECIAL TOOLS LISTS
(INCLUDING DEPOT MAINTENANCE REPAIR PARTS AND SPECIAL TOOLS)
FOR
FILTER, ISOLATION, AND CONVERTER UNITS FOR
AUTOMATIC DIGITAL MESSAGE SWITCHING CENTERS
AN/FYQ-42(V)1 THROUGH AN/FYQ-42(V)12 AND AN/FYQ-42(V)T1

Current as of 28 September 1973

Table of Contents

		Page	III Figure
SECTION	I. Introduction	1-1	
	II. Repair Parts List	2-1	1
Group	01. Power Supply	2-1	1
	02. Power Supply	2-3	2
	03. Fuse Panel	2-6	5
	04. Shelf Assembly	2-9	6
	05. Circuit Card	2-10	7
	06. Circuit Card	2-12	8
	07. Red/Black Isolation Unit	2-13	9
	08. Power Supply	2-20	10
	09. Fuse Panel	2-23	13
	10. Switch Assembly	2-26	14
	11. Case Assembly	2-27	15
	12. Audio Filter Units	2-28	
	13. RF Filter Units	2-28	
SECTION	III. Special Tools List	3-1	
	IV. Federal Stock Number and Reference Number Index	4-1	

LIST OF ILLUSTRATIONS

Figure Number	-----	Page
1	Signal level converter facility assemblies	2-30
2	Power supply, 368-41455-2	2-31
3	Module assembly, 368-41456-2	2-32
4	Power supply, PBX15-15C7551	2-33
5	Fuse panel, 368-41453	2-34
6	Card shelf, 368-41452-1	2-35
7	Circuit card assembly, 368-42537	2-36
8	Circuit card assembly, 368-41687-1	2-37
9	Red/Black isolation unit, 368-42333-1	2-38
10	Power supply assembly PP-4830/G, 368-41455-1	2-39
11	Module assembly, 363-41456-1	2-40
12	Power supply, PBX7-2C7523	2-41
13	Fuse panel, 368-41523	2-42
14	Isolation switch, P651	2-43
15	Electrical equipment case, 398-7572-2	2-44
16	Diode, substitute module, 368-43417	2-45
17	Extender card assembly, DC/DC converter	2-46
18	Power supply extender, 368-43259	2-47

SECTION I.
INTRODUCTION

1-1. Scope

This manual lists repair parts and special tools required for the performance of general support and depot maintenance of the filter Isolation and Converter Units for Automatic Digital Message Switching Centers AN/FYQ-42(V)1 through AN/FYQ-42(V)12 and AN/FYQ-42(V)T1

1-2. General

This Repair Parts and Special Tools List is divided into the following sections.

a. Repair Parts List-Section II. A list of repair parts authorized at the general support and depot levels for the performance of maintenance. The list also includes parts which must be removed for the replacement of the authorized parts. Parts lists are composed of functional groups in ascending numerical sequence.

b. Special Tools List-Section III. A list of special tools test and support equipment authorized for the performance of maintenance at the general support and depot levels

c. Federal Stock Number and Reference Number Index-Section IV. A list in ascending numerical sequence of all Federal stock numbers appearing in the listings with illustration figure numbers followed by a list in alphanumeric sequence of all reference numbers appearing in the listings.

1-3. Explanation of columns

The following provides an explanation of columns found in the tabular listings

a Source Maintenance and Recoverability Codes (SMR)

(1) Source Code Indicates the source for the listed items. Source codes are

Code	Explanation
P	Repair parts special tools and test equipment supplied from the GSA/DSA or Army supply system and authorized for use at indicated maintenance categories

P2	Repair parts, special tools and test equipment which are procured and
-----------	--

Code

Explanation

stocked for insurance purposes because the combat or military essentiality of the end item dictates that a minimum quantity be available in the supply system

P9--Assigned to items which are NSA design controlled unique repair parts special tools test measuring and diagnostic equipment which are stocked and supplied by the Army COMSEC Logistic System and which are not subject to the provisions of AR 380-41

P10--Assigned to items which are NSA design controlled special tools test measuring and diagnostic equipment for COMSEC support which are accountable under the provisions of AR 380-41 and which are stocked and supplied by the Army COMSEC logistic system

M--Repair parts special tools and test equipment which are not procured or stocked as such in the supply system but are to be manufactured at indicated maintenance levels

A--Assemblies which are not procured or stocked as such but are made up of two or more units. Such component units carry individual stock numbers and descriptions are procured and stocked separately and can be assembled to form the required assembly at indicated maintenance categories.

X--Parts and assemblies which are not procured or stocked and the mortality of which normally is below that of the applicable end item or component. **The failure of such part or assembly should result in retirement of the end item from the supply system**

X1--Repair parts which are not procured or stocked. **The requirement for such items will be filled by the next higher assembly or component**

X2--Repair parts special tools and test equipment which are not stocked and

have no foreseen mortality. The indicated maintenance category requiring such repair parts will attempt to obtain the parts through cannibalization or salvage. The item may be requisitioned, with exception data, from the end item manager for immediate use.

G—Major assemblies that are procured with **PEMA funds** for initial issue only as exchange assemblies at DS and GS level. These assemblies will not be stocked above DS and GS level or returned to depot supply level.

NOTE

Cannibalization or salvage may be used as a source of supply for any items source coded above except those coded **XI and aircraft support items as restricted by AR 700-42.**

(2) Maintenance code. Indicates the lowest category of maintenance authorized to install the repair part and/or use the special tool or test equipment for each application. Capabilities of higher maintenance categories are considered equal or better. **Maintenance codes are:**

<i>Code</i>	<i>Explanation</i>
C-----	Crew/Operator
O-----	Organizational maintenance
F-----	Direct support maintenance
H-----	General support maintenance
D-----	Depot maintenance

(3) Recoverability code. Indicates whether unserviceable items should be returned for recovery or salvage. Items not coded are expendable. **Recoverability codes are:**

<i>Code</i>	<i>Explanation</i>
R—	Repair parts (assemblies and components), special tools and test equipment which are considered economically repairable at direct and general support maintenance levels. When the item is no longer economically repairable, it is normally disposed of at the GS level. When supply considerations dictate, some of these repair parts may be listed for automatic return to supply for depot level repair as set forth in AR 710-1. When so listed, they will be replaced by supply on an exchange basis.
S—	Repair parts, special tools and test

<i>Code</i>	<i>Explanation</i>
	equipment, and assemblies which are economically repairable at DS and GS activities and which normally are furnished by supply on an exchange basis. When items are determined by a GSU to be uneconomically repairable, they will be evacuated to a depot for evaluation and analysis before final disposition.
T—	High dollar value recoverable repair parts, special tools and test equipment which are subject to special handling and are issued on an exchange basis. Such items will be repaired or overhauled at depot maintenance activities only. No repair may be accomplished at lower levels.
U—	Repair parts, special tools and test equipment specifically selected for salvage by reclamation units because of precious metal content, critical materials, high dollar value, or reusable castings or castings.

b. Federal Stock Number. Indicates the Federal stock number assigned to the item and will be used for requisitioning purposes.

c. Description. The dots indicate the indenture code of the listed item, for example, no dots =A (end item), .=B, ..=C, etc. This is followed by the Federal item name and a minimum description required to identify the item. When applicable, the second line indicates the reference designation assigned to the repair part. The last line indicates the reference number followed by the applicable Federal Supply Code for Manufacture (FSCM) in parentheses. The FSCM is used as an element in item identification to designate manufacturer or distributor or Government agency, etc., and is identified in SB 708-42.

d. Unit of Measure (U/M). Indicates the standard or basic quantity by which the listed item is used in performing the actual maintenance function. This measure is expressed by a two-character alphabetical abbreviation e.g., ea, in., pr, etc. When the unit of measure differs from the unit of issue, the lowest unit of issue that will satisfy the required units of measure will be requisitioned.

e. Quantity Incorporated in Unit. Indicates the quantity of the item used in the breakout shown on the illustration figure, which is prepared for a functional group, subfunctional group, or an assembly. A "V" appearing in this

column in lieu of a quantity indicates that no specific quantity is applicable e.g. shims spacers etc.

f. Allowances (30 day DS/GS Maintenance 1 Year Per 100 Equipments/Contingency Planning and Depot Maintenance) Items authorized for requisition as required are identified by an asterisk in the allowance column

g. Illustrations. This column is divided as follows

(1) Figure numbers. Indicates the figure number of the illustration on which the item is shown

DA Pam 310-4	Index of Technical Manuals Technical Bulletins Supply Manuals (Types 7 8 and 9) Supply Bulletins and Lubrication Orders
DA Pam 310-7	US Army Equipment Index of Modification Work Orders
TB SIG 222	Solder and Soldering
TB 746-10	Field Instructions for Painting and Preserving Electronics Command Equipment
TM 11-5895-391-15	Operator Organizational DS GS and Depot Maintenance Manual Automatic Digital Message Switching Centers AN/FYQ-42(V)1 through AN/FYQ-42(V)12 and AN/FYQ-42(V)T1
TM 11-5895-415-15	Operator Organizational DS GS and Depot Maintenance Manual Interconnecting Units Autodin Autovon AN/FYA-32 AN/FYA-33 AN/FYA-53 AN/FYA-54 ON-41/FYA-19 ON-52/FYA-T1 and ON-53/FYA-T1
TM 38-750	The Army Maintenance Management System (TAMMS)
TO-00-25-234	General Shop Practice Requirements for the Repair Maintenance and Tests of Electronic Equipment
TO-0-01N	Numerical Index and Requirements Tables Numerical Index Alphabetical Indexes and Cross Reference Table Technical Orders (ADP Category 00)
TO-31-1-75	Maintenance Engineering Standard General Maintenance Practices

1-5. How to Locate Repair Parts

a When Federal stock number or reference number is unknown

(1) First Using the table of contents determine the functional group within which the **repair part belongs i.e. Circuit Card Assembly 368-41687-1 This is necessary since illustrations are prepared for functional groups and listings are divided into the same group**

(2) **Second. Find the illustration covering the functional group to which the repair part belongs**

(3) **Third. Identify the repair part on the illustration and note the item number of the repair part**

(4) **Fourth Using the Repair Parts Listing find the functional group to which the repair part belongs and locate the illustration figure number and item number noted on the illustration.**

b When Federal stock number or reference number is known

(2) Item number Indicates the callout number used to reference the item on the illustration

1-4. Special Information

The following publications pertain to the Filter Isolation and Converter Units for Automatic Digital Message Switching Centers AN/FYQ 42(V)1 through AN/FYQ-42(V)12 and AN/FYQ-42(V)T1

(1) First Using the Index of Federal Stock Numbers and Reference Numbers **find the pertinent Federal stock number or reference number This index is in ascending FSN sequence followed by a list of reference numbers in ascending alphanumeric sequence cross referenced to the illustration figure number and item number**

(2) **Second Using the Repair Parts Listing find the functional group of the repair part and the illustration figure number and item number referenced in the Index of Federal Stock Numbers and Reference Numbers**

(3) **Third When the repair part is not illustrated using the table of contents, determine the functional group within which the repair part belongs Note the page number of the particular group Find the Federal stock number or reference number in the breakdown of repair parts shown for the functional group**

1-6. Abbreviations

Not applicable

1-7. Recommendations for Maintenance
Publication Improvements

a. The reporting of errors, omissions, and recommendations for improving this publication by the individual user is encouraged. Reports should be submitted on DA Form 2028 (Recommended Changes to Publications) and forwarded direct to Commander, US Army Electronics Command, ATTN: AMSEL-MA-C, Fort Monmouth, NJ 07703. NAVSHIPS 5600/2 (REV 10-67 formerly NAVSHIPS 4914) are forwarded to: Commander, Naval Electronics Systems Command, ATTN: 041.3, Washington, DC 20360.

b. Publications Improvement Report (AFTO Forms 22) approved by the quality control organization will be submitted directly to the AFLC activity indicated in the storage and issue (STG and Issue) column of NI and RTS. Reports will be addressed, as appropriate for the attention of: Directorate of Materiel Management (D/MM), Technical Order System Branch (MMST) at Air Materiel Areas (AMAS), or the Technical Systems Branch (MMOMP) at AFLC. Exceptions are indicated in paragraphs 8-28 through 8-32, 8-35, 8-41 and 8-42 in TO 00-5-1.

SECTION II. REPAIR PARTS LIST

(1) SNR CODE	(2) FEDERAL STOCK NUMBER	(3) DESCRIPTION REFERENCE NUMBER & MFR. CODE	(4) UNIT OF MEAS	(5) QTY INC IN UNIT	(6) 30-DAY DS MAINT ALLOWANCE			(7) 30-DAY GS MAINT ALLOWANCE			(8) 1 YR ALM EQUIP PER 100 CITY	(9) DEPOT MAINT ALM EQUIP PER 100	(10) ILLUSTRATIONS	
					(a)	(b)	(c)	(a)	(b)	(c)			(a) FIG NO.	(b) ITEM NO.
					1-20	21-50	51-100	1-20	21-50	51-100				
GROUP 01 POWER SUPPLY														
F--R-S	5895-935-0379	POWER SUPPLY FF-4824/FYA-10(V): 368-41455-2; (46859)	EA	1				*	*	*	*	*	1	1
F--R		.CLAMP, LOOP: MS25281-2; (96906)	EA	1				*	*	*	*	*	2	1
F--R		.CLAMP, LOOP: MS25281-5; (96906)	EA	2				*	*	*	*	*	2	2
F--R		.CLAMP, LOOP: 267-3053-4; (46859)	EA	2				*	*	*	*	*	2	3
F--R		.NUT, FLAIN, HEXAGON: MS35649-84; (96906)	EA	1				*	*	*	*	*	2	4
F--H	5305-579-3511	.SCREW, MACHINE: MS35216-42; (96906)	EA	1				*	*	*	*	*	2	5
F--H	5310-880-5978	.WASHER, FLAT: MS15795-807; (96906)	EA	1				*	*	*	*	*	2	6
F--H		.WASHER, LOCK: MS35338-80; (96906)	EA	1				*	*	*	*	*	2	7
F--H		.CLAMP, LOOP: 267-3053-1; (46859)	EA	2				*	*	*	*	*	2	8
F--H		.NUT, FLAIN, HEXAGON: MS35649-84; (96906)	EA	1				*	*	*	*	*	2	4
F--H	5305-579-3511	.SCREW, MACHINE: MS35216-42; (96906)	EA	1				*	*	*	*	*	2	5
F--H	5310-880-5978	.WASHER, FLAT: MS15795-807; (96906)	EA	2				*	*	*	*	*	2	6
F--H		.WASHER, LOCK: MS35338-80; (96906)	EA	2				*	*	*	*	*	2	7
F--H	5935-187-0723	.CONNECTOR, PLUG, ELECTRICAL: 306CCT; (71785)	EA	1				*	*	*	*	*	2	9
F--H		.CONNECTOR, PLUG, ELECTRICAL: 304CCT; (71785)	EA	1				*	*	*	*	*	2	10
F--H		.CONNECTOR, RECEPTACLE, ELECTRICAL: J3, J4 83-6024-2100-00; (95354)	EA	2				*	*	*	*	*	2	11
XI--H		.COVER, TERMINAL BOARD: TA15802-5; (84971)	EA	2									2	12
A--H-S		.MODULE ASSEMBLY: 368-41456-2; (46859)	EA	2									2	13
XI--H		.CASE, ELECTRI EQUIPMENT: CAL; (85604)	EA	1									2	14
XI--H		.CHASSIS, ELECTRICAL EQUIPMENT: 130-0264-6; (85604)	EA	1									2	15
F--H-S	5895-116-5406	.CIRCUIT CARD ASSEMBLY: 368-41746-2; (46859)	EA	1				*	*	*	*	*	2	16
XI--H		...PRINTED WIRING BOARD: 267-17729; (46859)	EA	1				*	*	*	*	*	3	1
F--H		...RELAY, ASSEMBLY: K1, K2 A138493; (71482)	EA	2				*	*	*	*	*	3	2
F--H		...RELAY, ASSEMBLY: K3 C841206; (71482)	EA	1				*	*	*	*	*	3	3

SECTION II. REPAIR PARTS LIST (Continued)

(1) SIB CODE	(2) FEDERAL STOCK NUMBER	(3) DESCRIPTION REFERENCE NUMBER & MFR CODE	(4) UNIT OF MEAS	(5) QTY INC IN UNIT	(6) 30-DAY GS MAINT ALLOWANCE			(7) 30-DAY GS MAINT ALLOWANCE			(8) 1 YR ALM PER EQUIP DIRECTY	(9) DEPT ALM PER 100 EQUIP	(10) ILLUSTRATIONS	
					(a) 1-20	(b) 21-50	(c) 51-100	()	(b) 21-50	(c) 51-100			(a) FIG NO	(b) ITEM NO
P--E	5905-725-8780	RESISTOR FIXED WIRE WOUND R7 R8 242H1805 (56289)	EA	2								3	4	
P--E	5905-012-3477	RESISTOR FIXED WIRE WOUND- R9 243H1205 (56289)	EA	1								3	5	
P--E	5905-962-0537	RESISTOR VARIABLE R5 R6 3067P1-201 (60294)	EA	2								3	6	
P--E	5905-279-2654	RESISTOR FIXED COMPOSITION R10 RC20P820J (81349)	EA	1								3	7	
P--E	5905-171-1999	RESISTOR FIXED COMPOSITION R1 THRU R4 RC20P821J (81349)	EA	4								3	8	
P--E	5961-810-3985	SEMICONDUCTOR DIODE CR8 1M2816B (81349)	EA	1								3	9	
P--E	5961-685-8967	SEMICONDUCTOR DIODE C17 1M1614 (81349)	EA	1								3	10	
P--E	5961-577-6214	SEMICONDUCTOR DIODE C11 THRU C15 1M538 (81349)	EA	5								3	11	
P--E	5961-087-7949	SEMICONDUCTOR DIODE C16 1M1614B (81349)	EA	1								3	12	
P--E	5805-806-1856	SOCKET SEMICONDUCTOR CR8 MCL5 (04713)	EA	1								3	13	
P--E	5940-620-8424	TERMINAL LUG MB35431 4 (96906)	EA	1								3	14	
P--E	5961-829-0194	TRANSISTOR Q1 2N1308 (81349)	EA	1								3	15	
P--E	5961-851-5923	TRANSISTOR 2N1309 (81349)	EA	1								3	16	
P--E	6240-851-4352	LAMP INCANDESCENT R82 R83 330 (71744)	EA	2								2	1	
P--E		INSULATOR STANDOFF 8752880832-7 (06540)	EA	5								2	18	
P--E	5305-054-6667	SCREW MACHINE MB51957 42 (96906)	EA	2								2	19	
P--E	5310-880-5978	WASHER FLAT MB15795-807 (96906)	EA	2								2	6	
P--E		WASHER LOCK MB35338-80 (96906)	EA	2								2	7	
P--E		INSULATOR STANDOFF 8752880832-7 (06540)	EA	4								2	20	
P--E	5305-054-6667	SCREW MACHINE MB51957 42 (96906)	EA	2								2	19	
P--E	5310-880-5978	WASHER FLAT MB15795-807 (96906)	EA	1								2	6	
P--E		WASHER LOCK MB35338-80 (96906)	EA	1								2	7	

SECTION II. REPAIR PARTS LIST (Continued)

(1) SNR CODE	(2) FEDERAL STOCK NUMBER	(3) DESCRIPTION REFERENCE NUMBER & INFR. CODE	(4) UNIT OF MEAS USABLE ON CODE	(5) QTY INC IN UNIT	(6) 30-DAY DS MAINT ALLOWANCE			(7) 30-DAY GS MAINT ALLOWANCE			(8) 1 YR ALM PERIOD EQUIP CHNGY	(9) DEPOT MAINT ALM PERIOD EQUIP	(10) ILLUSTRATIONS	
					(a) 1-20	(b) 21-50	(c) 51-100	(a) 1-20	(b) 21-50	(c) 51-100			(a) FIG NO.	(b) ITEM NO.
					P-H		..JACK, TIP: TP4 SERVOASSEMBLY; (98291)	EA	1					
P-H	5935-937-6264	..JACK, TIP: TP1, TP2, TP3, TP5 SERVOASSEMBLY; (98291)	EA	4				*	*	*	*	2	22	
P-H	6240-892-4420	..LAMP, GLOW: DEL MS20; (71744)	EA	1				*	*	*	*	2	23	
P-H	6210-806-9421	..LIGHT, INDICATOR: DS2, DS3 MS25256-4; (96906)	EA	2				*	*	*	*	2	24	
P-H		..LIGHT, INDICATOR: DEL MS25257-6; (96906)	EA	1				*	*	*	*	2	25	
P-H		..SCREW, MACHINE: MS51957-41; (96906)	EA	4				*	*	*	*			
P-H	5305-054-6666	..PANEL, FRONT: 268-21055-2; (46859)	EA	1				*	*	*	*	2	26	
P-H		..TERMINAL, LIG: 1488-6; (83330)	EA	2				*	*	*	*			
XL-H		..PANEL, CONNECTOR: RA6-6BF; (85604)	EA	1								2	27	
M-H		..PLATE, DESIGNATION: MS5-140; (71785)	EA	2								2	28	
A-H-S		..POWER SUPPLY: 368-41809-1; (46859)	EA	4								2	29	
P-H	6130-018-8560	..POWER SUPPLY: SEE GROUP 02 PBX15-15C7551; (85604)	EA	1				*	*	*	*	2	30	
P-H	5905-764-3239	..RESISTOR, VARIABLE: F101 3067P1-202; (80294)	EA	1				*	*	*	*	2	31	
P-H	5905-279-2669	..RESISTOR, FIXED, COMPOSITION: RC20GF133J; (81349)	EA	1				*	*	*	*	2	32	
XL-H		..SHELF: A1 RA6-6; (85604)	EA	1								2	33	
P-H	5940-983-6046	..TERMINAL BOARD: TB1, TB2 37TB5; (81349)	EA	2				*	*	*	*	2	34	
P-H		..NUT, PLAIN, HEXAGON: MS35649-64; (96906)	EA	4				*	*	*	*	2	35	
P-H		..SCREW, MACHINE: MS35216-28; (96906)	EA	4				*	*	*	*	2	36	
P-H		..WASHER, LOCK: MS35338-79; (96906)	EA	4				*	*	*	*	2	37	
GROUP 02 POWER SUPPLY														
A-H-S	6130-018-8560	..POWER SUPPLY: PBX15-15C7551; (85604)	EA	1								2	30	
A-H-S		..CIRCUIT CARD ASSEMBLY: PCB1 235-0176; (85604)	EA	1								2	38	

SECTION II. REPAIR PARTS LIST (Continued)

(1) SNR CODE	(2) FEDERAL STOCK NUMBER	(3) DESCRIPTION REFERENCE NUMBER & MFR. CODE	(4) UNIT OF MEAS	(5) QTY INC IN UNIT	(6) 30-DAY DS MAINT- ALLOWANCE			(7) 30-DAY GS MAINT ALLOWANCE			(8) 1 YR ALM PER EQUIP CONVY	(9) DEPOT ALM PER EQUIP	(10) ILLUSTRATIONS	
					(a)	(b)	(c)	(a)	(b)	(c)			(a) FIG NO.	(b) ITB# NO.
					1-20	21-50	51-100	1-20	21-50	51-100				
P--H	5910-929-1372	..CAPACITOR, FIXED, ELECTROLYTIC: C212 43F9095AA1; (01002)	EA	1				•	•	•	•	•	•	1
P--H	5910-904-6431	..CAPACITOR, FIXED, ELECTROLYTIC: C201 76FCZLN680; (24446)	EA	1				•	•	•	•	•	•	2
P--H	5910-985-0101	..CAPACITOR, FIXED, ELECTROLYTIC: C202 76F02B271; (24446)	EA	1				•	•	•	•	•	•	3
P--H	5910-932-8492	..CAPACITOR, FIXED, ELECTROLYTIC: C211, C213 76F02BFL51; (24446)	EA	2				•	•	•	•	•	•	4
P--H	5910-929-1327	..CAPACITOR, FIXED, ELECTROLYTIC: C204 43F9121AA1; (01002)	EA	1				•	•	•	•	•	•	5
P--H	5910-013-9427	..CAPACITOR, FIXED, ELECTROLYTIC: C203A, C203B 43FT580AA1; (01002)	EA	2				•	•	•	•	•	•	6
P--H		..CAPACITOR, FIXED, PLASTIC: C207, C214 X663F20492W2; (84411)	EA	2				•	•	•	•	•	•	7
P--H	5910-928-7816	..CAPACITOR, FIXED, PLASTIC: C206, C209 192F10302; (56289)	EA	2				•	•	•	•	•	•	8
P--H	5910-841-7971	..CAPACITOR, FIXED, PLASTIC: C210 X663F10406W2; (84411)	EA	1				•	•	•	•	•	•	9
P--H	5905-926-8554	..RESISTOR, FIXED, WIRE WOUND: R224 TS1W572F; (02985)	EA	1				•	•	•	•	•	•	10
P--H	5905-974-6037	..RESISTOR, FIXED, WIRE WOUND: R205 VAL3-152J; (83777)	EA	1				•	•	•	•	•	•	11
P--H	5905-913-4338	..RESISTOR, FIXED, WIRE WOUND: R206, R207 RW79UR499F; (81349)	EA	2				•	•	•	•	•	•	12
P--H	5905-848-4784	..RESISTOR, VARIABLE: R221 115-1789; (85604)	EA	1				•	•	•	•	•	•	13
P--H	5905-279-2593	..RESISTOR, FIXED, COMPOSITION: R201 RC20GF241J; (81349)	EA	1				•	•	•	•	•	•	14
P--H	5905-192-3973	..RESISTOR, FIXED, COMPOSITION: R211 RC20GF471J; (81349)	EA	1				•	•	•	•	•	•	15
P--H	5905-279-1877	..RESISTOR, FIXED, COMPOSITION: R202 RC20GF242J; (81349)	EA	1				•	•	•	•	•	•	16
P--H	5905-195-6800	..RESISTOR, FIXED, COMPOSITION: R223 RC20GF561J; (81349)	EA	1				•	•	•	•	•	•	17
P--H	5905-185-8510	..RESISTOR, FIXED, COMPOSITION: R209 RC20GF103J; (81349)	EA	1				•	•	•	•	•	•	18
P--H	5905-279-1751	..RESISTOR, FIXED, COMPOSITION: R215 RC20GF302J; (81349)	EA	1				•	•	•	•	•	•	19

SECTION II. REPAIR PARTS LIST (Continued)

(1) SNR CODE	(2) FEDERAL STOCK NUMBER	(3) DESCRIPTION REFERENCE NUMBER & MFR. CODE	USABLE ON CODE	(4) UNIT OF MEAS	(5) QTY INC IN UNIT	(5) 30-DAY DS MAINT ALLOWANCE			(7) 30-DAY GS MAINT ALLOWANCE			(8) 1 YR ALW PERIOD EQUIP ENTELY	(9) DEPOT MAINT ALW PER 100 EQUIP	(10) ILLUSTRATIONS	
						(a) 1-20	(b) 21-50	(c) 51-100	(a) 1-20	(b) 21-50	(c) 51-100			(a) FIG NO.	(b) ITEM NO.
						P--H	5905-279-2673	..RESISTOR, FIXED, COMPOSITION: R204 RC20GF622J; (81349)		EA	1				
P--H	5905-279-1880	..RESISTOR, FIXED, COMPOSITION: R213 RC20GF272J; (81349)		EA	1				*	*	*	*	*	4	21
P--H	5905-252-5434	..RESISTOR, FIXED, COMPOSITION: R208 RC20GF121J; (81349)		EA	1				*	*	*	*	*	4	22
P--H	5905-190-8883	..RESISTOR, FIXED, COMPOSITION: R216 RC20GF100J; (81349)		EA	1				*	*	*	*	*	4	23
P--H	5905-299-1965	..RESISTOR, FIXED, COMPOSITION: R203 RC20GF301J; (81349)		EA	1				*	*	*	*	*	4	24
P--H	5905-195-6806	..RESISTOR, FIXED, COMPOSITION: R212 RC20GF102J; (81349)		EA	1				*	*	*	*	*	4	25
P--H	5905-190-8889	..RESISTOR, FIXED, COMPOSITION: R210 RC20GF101J; (81349)		EA	1				*	*	*	*	*	4	26
P--H	5905-252-5434	..RESISTOR, FIXED, COMPOSITION: R214 RC20GF121J; (81349)		EA	1				*	*	*	*	*	4	22
P--H	5905-985-6440	..RESISTOR, FIXED, FILM: R220 CESTO-1002F; (35009)		EA	1				*	*	*	*	*	4	27
P--H	5905-782-4066	..RESISTOR, FIXED, FILM: R217 CESTO-6811F; (35009)		EA	1				*	*	*	*	*	4	28
P--H	5905-928-1423	..RESISTOR, FIXED, FILM: R222 CESTO-7500F; (35009)		EA	1				*	*	*	*	*	4	29
P--H	5905-994-0468	..RESISTOR, FIXED, FILM: R218 CESTO-2432F; (35009)		EA	1				*	*	*	*	*	4	30
P--H		..RESISTOR, FIXED, FILM: R219 TS3WOR33HPORM5PCT; (02985)		EA	1				*	*	*	*	*	4	31
P--H	5961-932-7031	..SEMICONDUCTOR, DIODE: CR201 THRU CR203, CR206, CR207, CR214 SM110; (11961)		EA	6				*	*	*	*	*	4	32
P--H	5961-866-5454	..SEMICONDUCTOR, DIODE: CR212 1N821; (81349)		EA	1				*	*	*	*	*	4	33
P--H		..SEMICONDUCTOR, DIODE: CR208, CR209, CR210 SV125; (03877)		EA	3				*	*	*	*	*	4	34
P--H	5961-936-8405	..SEMICONDUCTOR, DIODE: CR204, CR205 SM510; (11961)		EA	2				*	*	*	*	*	4	35
P--H	6130-898-1479	..SEMICONDUCTOR, DIODE: CR211, CR213, CR215 124-0178; (85604)		EA	3				*	*	*	*	*	4	36
P--H	5961-764-2572	..TRANSISTOR: Q202, Q204, Q208 2N1131A; (80131)		EA	3				*	*	*	*	*	4	37

SECTION II. REPAIR PARTS LIST (Continued)

(1) SNR CODE	(2) FEDERAL STOCK NUMBER	(3) DESCRIPTION REFERENCE NUMBER & MFR. CODE	(4) UNIT OF MEAS	(5) QTY INC IN UNIT	(6) 30-DAY DS MAINT ALLOWANCE			(7) 30-DAY GS MAINT ALLOWANCE			(8) 1 st R ALM PER 100 EQUIP CENTGY	(9) DEPOT MAINT ALM PER 100 EQUIP	(10) ILLUSTRATIONS	
					(a)	(b)	(c)	(a)	(b)	(c)			(a)	(b)
					1-20	21-50	51-100	1-20	21-50	51-100			FIG NO.	ITEM NO.
P--H	5961-836-1141	.TRANSISTOR: Q201, Q203, Q205, Q206, Q207 2W336A; (80131)	EA	5				*	*	*	*	*	4	38
P--H	6240-034-5908	.LIGHT, INDICATOR: DS101 39-14-1475; (72619)	EA	1				*	*	*	*	*	2	39
P--H		.RESISTOR, FIXED, WIRE WOUND: R1C1 MOR10-202J; (83777)	EA	1				*	*	*	*	*	2	40
P--H		.TRANSFORMER, POWER: T101 100-1544; (85604)	EA	1				*	*	*	*	*	2	41
P--H	5961-917-3478	.TRANSISTOR: Q101, Q102 40251; (C2735)	EA	2				*	*	*	*	*	2	42
GROUP 03 FUSE PANEL														
G--H-S		PANEL, FUSE: 368-41453; (46859)	EA	1									1	2
XI--H		.BRACKET, MOUNTING: 268-19232; (46859)	EA	2									5	1
P--H		.NUT, PLAIN, HEXAGON: MS35649-64; (96906)	EA	4				*	*	*	*	*	5	2
P--H	5305-763-6963	.SCREW, MACHINE: MS51959-28; (96906)	EA	2				*	*	*	*	*	5	3
P--H	5305-054-6652	.SCREW, MACHINE: MS51957-28; (96906)	EA	2				*	*	*	*	*	5	4
P--H	5310-880-5976	.WASHER, FLAT: MS15795-806; (96906)	EA	2				*	*	*	*	*	5	5
P--H		.WASHER, LOCK: MS35338-79; (96906)	EA	4				*	*	*	*	*	5	6
XI--H		.BRACKET, RELAY: 268-19204; (46859)	EA	1									5	7
P--H		.NUT, PLAIN, HEXAGON: MS35649-64; (96906)	EA	2				*	*	*	*	*	5	2
P--H	5305-727-8832	.SCREW, MACHINE: MS51959-29; (96906)	EA	2				*	*	*	*	*	5	8
P--H	5310-011-1041	.WASHER, LOCK: MS35338-79; (96906)	EA	2				*	*	*	*	*	5	6
XI--H		.BRACKET, DOUBLE ANGLE: 268-20835; (46859)	EA	1									5	9
P--H		.NUT, PLAIN, HEXAGON: MS35649-64; (96906)	EA	3				*	*	*	*	*	5	2
P--H	5305-054-6652	.SCREW, MACHINE: MS51957-28; (96906)	EA	3				*	*	*	*	*	5	4
P--H	5310-722-5998	.WASHER, FLAT: MS15795-805; (96906)	EA	3				*	*	*	*	*	5	10
P--H		.WASHER, LOCK: MS35338-79; (96906)	EA	3				*	*	*	*	*	5	6
P--H		.CLAMP, LOOP: MS25281-3; (96906)	EA	1				*	*	*	*	*	5	11

SECTION II. REPAIR PARTS LIST (Continued)

(1) SMR CODE	(2) FEDERAL STOCK NUMBER	(3) DESCRIPTION REFERENCE NUMBER & MFR. CODE	(4) UNIT OF MEAS	(5) QTY INC IN UNIT	(6) 30-DAY DS MAINT ALLOWANCE			(7) 30-DAY GS MAINT ALLOWANCE			(8) 1 YR ALW PERIOD EQUIP PERIOD	(9) DEPOT MAINT PERIOD EQUIP	(10) ILLUSTRATIONS	
					(a) 1-20	(b) 21-50	(c) 51-100	(a) 1-20	(b) 21-50	(c) 51-100			(a) FIG NO.	(b) ITEM NO.
					P--H		.NUT, PLAIN, HEXAGON; MS35649-64; (96906)	EA	1					
P--H	5305-054-6654	.SCREW, MACHINE; MS51957-30; (96906)	EA	1				*	*	*	*	*	5	12
P--H	5310-722-5998	.WASHER, FLAT; MS15795-805; (96906)	EA	1				*	*	*	*	*	5	10
P--H		.WASHER, LOCK; MS35338-79; (96906)	EA	1				*	*	*	*	*	5	6
P--H		.CLAMP, LOOP; MS25281-4; (96906)	EA	4				*	*	*	*	*	5	13
P--H		.NUT, PLAIN, HEXAGON; MS35649-64; (96906)	EA	1				*	*	*	*	*	5	2
P--H	5305-054-6654	.SCREW, MACHINE; MS51957-30; (96906)	EA	1				*	*	*	*	*	5	12
P--H	5310-722-5998	.WASHER, FLAT; MS15795-805; (96906)	EA	1				*	*	*	*	*	5	10
P--H		.WASHER, LOCK; MS35338-79; (96906)	EA	1				*	*	*	*	*	5	6
P--H	5935-665-7965	.CONNECTOR, PLUG, ELECTRICAL; P2 P304AB; (71785)	EA	1				*	*	*	*	*	5	14
P--H		.NUT, PLAIN, HEXAGON; MS35649-64; (96906)	EA	2				*	*	*	*	*	5	2
P--H	5305-054-6652	.SCREW, MACHINE; MS51957-28; (96906)	EA	2				*	*	*	*	*	5	4
P--H	5310-722-5998	.WASHER, FLAT; MS15795-805; (96906)	EA	2				*	*	*	*	*	5	10
P--H		.WASHER, LOCK; MS35338-79; (96906)	EA	2				*	*	*	*	*	5	6
P--H		.COVER, ELECTRICAL CONNECTOR; RP14261G1; (71482)	EA	1				*	*	*	*	*	5	15
P--H	5305-054-6656	.SCREW, MACHINE; MS51957-32; (96906)	EA	2				*	*	*	*	*	5	16
P--H		.WASHER, LOCK; MS35338-79; (96906)	EA	2				*	*	*	*	*	5	6
P--H	5920-968-3238	.FUSEHOLDER; XF1 THRU XF40 HLT; (71400)	EA	40				*	*	*	*	*	5	17
P--H	5920-857-8909	.FUSE; INDICATOR ALARM; F1 THRU F40 GMT3-4; (71400)	EA	40				*	*	*	*	*	5	18
P--H	5325-202-2515	.GROMMET, RUBBER; 1043-1C; (72653)	EA	1				*	*	*	*	*	5	19
XI-H		.HOLDER, CARD; 268-19265-1; (46859)	EA	2				*	*	*	*	*	5	20
P--H	5305-764-2966	.SCREW, MACHINE; MS51959-2; (96906)	EA	2				*	*	*	*	*	5	21
P--H	5930-995-2400	.LAMPHOLDER; XDS1 192A045-1471; (72619)	EA	1				*	*	*	*	*	5	22
P--H		.WASHER, FLAT; 268-21138; (46859)	EA	1				*	*	*	*	*	5	23
P--H		.LAMP, INCANDESCENT; 330; (71744)	EA	1				*	*	*	*	*	5	24

SECTION II. REPAIR PARTS LIST (Continued)

(1) SMR CODE	(2) FEDERAL STOCK NUMBER	(3) DESCRIPTION REFERENCE NUMBER & MFR. CODE	(4) UNIT OF MEAS	(5) QTY INC IN UNIT	(6) 30-DAY DS MAINT ALLOWANCE			(7) 30-DAY GS MAINT ALLOWANCE			(8) 1 YR ALM PERIOD EQUIP CONTCY	(9) DEPOT MAINT ALM PERIOD EQUIP	(10) ILLUSTRATIONS	
					(a) 1-20	(b) 21-50	(c) 51-100	(a) 1-20	(b) 21-50	(c) 51-100			(a) FIG NO.	(b) ITEM NO.
					XL-H		.PANEL, BLANK: 268-20958; (46859)	EA	1					
P-H	5945-772-6409	.RELAY, ARMATURE: KI A8516; (71482)	EA	1				*	*	*	*	5	26	
P-H	5935-257-7196	.RETAINER, ELECTRICAL CONNECTOR: P306AB; (71785)	EA	1				*	*	*	*	5	27	
P-H		.NUT, PLAIN, HEXAGON: MS35649-64; (96906)	EA	2				*	*	*	*	5	2	
P-H	5305-054-6652	.SCREW, MACHINE: MS51957-28; (96906)	EA	2				*	*	*	*	5	4	
P-H	5310-722-5998	.WASHER, FLAT: MS15795-805; (96906)	EA	2				*	*	*	*	5	10	
P-H		.WASHER, LOCK: MS35338-79; (96906)	EA	2				*	*	*	*	5	6	
P-H	5961-577-6214	.SEMICONDUCTOR, DIODE: CRL, CR2 1M538; (81349)	EA	2				*	*	*	*	5	28	
P-H		.SOCKET, RELAY: RPL4391G3; (71482)	EA	1				*	*	*	*	5	29	
P-H		.NUT, PLAIN, HEXAGON: MS35649-64; (96906)	EA	1				*	*	*	*	5	2	
P-H	5305-054-6654	.SCREW, MACHINE: MS51957-30; (96906)	EA	1				*	*	*	*	5	12	
P-H		.WASHER, LOCK: MS35338-79; (96906)	EA	1				*	*	*	*	5	6	
P-H		.SOLDER: SM63MARP1; (81349)		1				*	*	*	*			
P-H		.STRIP, FUSE: 268-19221-4; (46859)	EA	4				*	*	*	*	5	30	
P-H		.NUT, PLAIN, HEXAGON: MS35649-44; (96906)	EA	2				*	*	*	*	5	31	
P-H	5305-727-8831	.SCREW, MACHINE: MS51959-19; (96906)	EA	2				*	*	*	*	5	32	
P-H	5310-042-9609	.WASHER, LOCK: MS35338-78; (96906)	EA	2				*	*	*	*	5	33	
P-H		.TERMINAL BOARD: TB1, TB2 3-582440-9; (00779)	EA	2				*	*	*	*	5	34	
P-H		.NUT, PLAIN, HEXAGON: MS35649-64; (96906)	EA	2				*	*	*	*	5	2	
P-H	5305-054-6674	.SCREW, MACHINE: MS51957-49; (96906)	EA	2				*	*	*	*	5	35	
P-H	5310-880-5978	.WASHER, FLAT: MS15795-807; (96906)	EA	2				*	*	*	*	5	36	
P-H		.WASHER, LOCK: MS35338-80; (96906)	EA	2				*	*	*	*	5	37	
M-H		.WIRING HARNESS: 461-4768; (46859)	EA	1								5	38	
M-H		.WIRING HARNESS, BRANCHED: 461-4769; (46859)	EA	1								5	39	
P-H	5940-621-2195	.TERMINAL, TAPPED PIN: 41646; (89110)	EA	20				*	*	*	*	5	40	

SECTION II. REPAIR PARTS LIST (Continued)

(1) SHR CODE	(2) FEDERAL STOCK NUMBER	(3) DESCRIPTION REFERENCE NUMBER & MFR. CODE	(4) UNIT OF MEAS	(5) QTY INC IN UNIT	(6) 30-DAY DS MAINT ALLOWANCE			(7) 30-DAY GS MAINT ALLOWANCE			(8) 1 YR ALW PERIOD EQUIP CATG	(9) DEPOT MAINT ALW PERIOD EQUIP	(10) ILLUSTRATIONS	
					(a)	(b)	(c)	(a)	(b)	(c)			(a)	(b)
					1-20	21-50	51-100	1-20	21-50	51-100			FIG NO.	ITEM NO.
P--H		.CLAMP, LOOP: MS25281-3; (96906)	EA	1				*	*	*	*	*	5	11
P--E		.NUT, FLAIN, HEXAGON: MS35649-64; (96906)	EA	1				*	*	*	*	*	5	2
P--H	5305-719-5064	.SCREW, MACHINE: MS51959-30; (96906)	EA	1				*	*	*	*	*	5	41
P--H	5310-722-5998	.WASHER, FLAT: MS15795-805; (96906)	EA	1				*	*	*	*	*	5	10
P--H		.WASHER, LOCK: MS35338-79; (96906)	EA	1				*	*	*	*	*	5	6
GROUP 04 SHELF ASSEMBLY														
G--H-S		CARD SHELF: 368-41452-1; (46859)	EA	V									1	3
A--H-S		.BOARD, CAPACITOR: 368-41450; (46859)	EA	6									6	1
XI-H		.BOARD, CAPACITOR: 368-41450-1; (46859)	EA	1									6	2
P--H	5340-016-6077	.CLIP, SPRING TENSION: MS28137-17; (96906)	EA	1				*	*	*	*	*	6	3
P--H	5940-159-0229	.TERMINAL, SYUD: 1300C; (88245)	EA	2				*	*	*	*	*	6	4
P--H	5910-021-2684	.CAPACITOR, FIXED, PLASTIC: C1 THRU C6 PKMG647; (14655)	EA	6				*	*	*	*	*	6	5
A--H-S		.CARD SHELF: 368-41802; (46859)	EA	1									6	6
XI-H		.CARD SHELF: 368-41802-1; (46859)	EA	2									6	7
P--H	5320-117-6951	.RIVET, SOLID: MS20426AD4-6; (96906)	EA	6				*	*	*	*	*	6	8
XI-H		.SHELF, CARD MOUNTING: 14H013H01; (46859)	EA	1									6	9
P--H-S	5895-116-5405	.CIRCUIT CARD ASSEMBLY: SEE GROUP 05 368-42537; (46859)	EA	6				*	*	*	*	*	6	10
P--H-S	5895-116-5404	.CIRCUIT CARD ASSEMBLY: SEE GROUP 06 368-41687-1; (46859)	EA	6				*	*	*	*	*	6	11
P--H	5905-228-6430	.CLIP, RESISTOR: 268-21127; (46859)	EA	12				*	*	*	*	*	6	12
P--H		.NUT, FLAIN, HEXAGON: MS35649-44; (96906)	EA	1				*	*	*	*	*	6	13
P--H		.SCREW, MACHINE: MS35233-15; (96906)	EA	1				*	*	*	*	*	6	14
P--H	5310-042-9609	.WASHER, LOCK: MS35338-78; (96906)	EA	1				*	*	*	*	*	6	15
P--H	5935-832-6774	.CONTACT, ELECTRICAL: 582573-1; (00779)	EA	12				*	*	*	*	*	6	16
P--H		.NUT, FLAIN, HEXAGON: MS35649-44; (96906)	EA	2				*	*	*	*	*	6	13

SECTION II. REPAIR PARTS LIST (Continued)

(1) SNR CODE	(2) FEDERAL STOCK NUMBER	(3) DESCRIPTION REFERENCE NUMBER & MFR. CODE	(4) UNIT OF MEAS	(5) QTY INC IN UNIT	(6) 30-DAY DS MAINT ALLOWANCE			(7) 30-DAY GS MAINT ALLOWANCE			(8) 1 YR ALM PER 100 EQUIP ENTGLY	(9) DEPOT MAINT ALM PER 100 EQUIP	(10) ILLUSTRATIONS	
					(a)	(b)	(c)	(a)	(b)	(c)			(a) FIG NO.	(b) ITEM NO.
					1-20	21-50	51-100	1-20	21-50	51-100				
P--H		.SCREW, MACHINE: MS35233-18; (96906)	EA	2				*	*	*	*	*	6	17
P--H	5310-595-6211	.WASHER, FLAT: MS15795-803; (96906)	EA	2				*	*	*	*	*	6	18
P--H	5310-042-9609	.WASHER, LOCK: MS35338-78; (96906)	EA	2				*	*	*	*	*	6	15
P--H		.INSULATOR, STANDOFF: 9224SS115-0; (06540)	EA	12				*	*	*	*	*	6	19
P--H		.NUT, FLAIN, HEXAGON: MS35649-44; (96906)	EA	1				*	*	*	*	*	6	13
P--H		.SCREW, MACHINE: MS35233-19; (96906)	EA	1				*	*	*	*	*	6	20
P--H	5310-042-9609	.WASHER, LOCK: MS35338-78; (96906)	EA	1				*	*	*	*	*	6	15
M--H		.PLATE, DESIGNATION: 53-9016-2402; (91662)	EA	1									6	21
M--H		.PLATE, INSTRUCTION: 268-20836-2; (46859)	EA	12									6	22
P--H		.RESISTOR, FIXED, WIREWOUND: R1 THRU R6 3792; (44655)	EA	6				*	*	*	*	*	6	23
P--H	5930-845-5840	.SWITCH, TOGGLE: TS3; (70309)	EA	12				*	*	*	*	*	6	24
GROUP 05 CIRCUIT CARD														
P--H-S	5895-116-5405	CIRCUIT CARD ASSEMBLY: 368-42537; (46859)	EA	1				*	*	*	*	*	6	10
XI-H		..BRACKET, ANGLE: 268-20834-2; (46859)	EA	1									7	1
P--H		..CAPACITOR, FIXED, MICA: C1 CM05D301J03; (81349)	EA	1				*	*	*	*	*	7	2
P--H	5910-836-8900	..CAPACITOR, FIXED, PLASTIC: C2, C3 CTM102VLJ; (81349)	EA	2				*	*	*	*	*	7	3
P--H	5910-835-2738	..CAPACITOR, FIXED, PLASTIC: C4 CTM154VAJ; (81349)	EA	1				*	*	*	*	*	7	4
P--H	6240-923-0758	..LAMP, INCANDESCENT: DS1, DS2 CML730; (71744)	EA	2				*	*	*	*	*	7	5
M--H		..PLATE, INSTRUCTION: 268-20836-1; (46859)	EA	1									7	6
XI-H		..PRINTED WIRING BOARD: 267-18103; (46859)	EA	1									7	7
P--H	5945-913-4386	..RELAY, ARMATURE: K1 HGSN501G; (71482)	EA	1				*	*	*	*	*	7	8
P--H	5905-244-7397	..RESISTOR, FIXED, WIRE WOUND: R12 RS2C400HMLPCT; (91637)	EA	1				*	*	*	*	*	7	9

SECTION II. REPAIR PARTS LIST (Continued)

(1) SNR CODE	(2) FEDERAL STOCK NUMBER	(3) DESCRIPTION REFERENCE NUMBER & MFR. CODE	(4) UNIT OF MEAS	(5) QTY INC FN UNIT	(6) 30-DAY DS MAINT ALLOWANCE			(7) 30-DAY GS MAINT ALLOWANCE			(8) 1 YR ALW PERIOD EQUIP CENTS	(9) DEPOT MAINT ALLW PER 100 EQUIP	(10) ILLUSTRATIONS	
					(a)	(b)	(c)	(a)	(b)	(c)			(a)	(b)
					1-20	21-50	51-100	1-20	21-50	51-100			FIG NO.	ITEM NO.
P--H	5905-400-4459	..RESISTOR, FIXED, WIRE WOUND: R8 RS2C600HMLPCT; (91637)	EA	1				*	*	*	*	*	7	10
P--H	5905-937-5893	..RESISTOR, THERMAL: RT1 L060637-4735-8588; (91833)	EA	1				*	*	*	*	*	7	11
P--H		..RESISTOR, VARIABLE: R17 330P13000EM3-SW; (71450)	EA	1				*	*	*	*	*	7	12
P--H	5905-993-4959	..RESISTOR, VARIABLE: R9 330P5000EM3-SW; (71450)	EA	1				*	*	*	*	*	7	13
P--H	5905-185-8510	..RESISTOR, FIXED, COMPOSITION: R1, R3, R4 RC20GF103J; (81349)	EA	3				*	*	*	*	*	7	14
P--H	5905-279-3504	..RESISTOR, FIXED, COMPOSITION: R14, R15 RC20GF472J; (81349)	EA	2				*	*	*	*	*	7	15
P--H	5905-279-1870	..RESISTOR, FIXED, COMPOSITION: R5 RC20GF132J; (81349)	EA	1				*	*	*	*	*	7	16
P--H	5905-192-3973	..RESISTOR, FIXED, COMPOSITION: R10, R11, R16 RC20GF471J; (81349)	EA	3				*	*	*	*	*	7	17
P--H	5905-195-6453	..RESISTOR, FIXED, COMPOSITION: R2 RC20GF562J; (81349)	EA	1				*	*	*	*	*	7	18
P--H	5905-279-1761	..RESISTOR, FIXED, COMPOSITION: R7, R13 RC20GF621J; (81349)	EA	2				*	*	*	*	*	7	19
P--H	5905-993-5984	..RESISTOR, FIXED, FILM: R6 RWF0D5621F; (81349)	EA	1				*	*	*	*	*	7	20
P--H	6250-060-8095	..RETAINER, LAMP: XDS1 297-3281-1; (46859)	EA	1				*	*	*	*	*	7	21
P--H		..SCREW, SELF-TAPPING: 9W0021; (46859)	EA	1				*	*	*	*	*	7	22
P--H	5310-899-9145	..WASHER, FLAT: MS9321-04; (96906)	EA	1				*	*	*	*	*	7	23
P--H	5961-842-6181	..SEMICONDUCTOR DEVICE, DIODE: CR1, CR3 1M3018B; (81349)	EA	2				*	*	*	*	*	7	24
P--H	5961-926-0209	..SEMICONDUCTOR DEVICE, DIODE: CR4 1M3824A; (81349)	EA	1				*	*	*	*	*	7	25
P--H	5961-848-7007	..SEMICONDUCTOR DEVICE, DIODE: CR2 1M968B; (81349)	EA	1				*	*	*	*	*	7	26
P--H	5930-845-5840	..SWITCH, TOGGLE: S1 TS3; (70309)	EA	1				*	*	*	*	*	7	27
P--H	5961-829-0194	..TRANSISTOR: Q1, Q2 2N1308; (81349)	EA	2				*	*	*	*	*	7	28
P--H	5961-851-5923	..TRANSISTOR: Q3 2N1309; (81349)	EA	1				*	*	*	*	*	7	29

SECTION II. REPAIR PARTS LIST (Continued)

(1) SMR CODE	(2) FEDERAL STOCK NUMBER	(3) DESCRIPTION REFERENCE NUMBER & MFR CODE	(4) UNIT OF MEAS	(5) QTY INC IN UNIT	(6) 30-DAY DS MAINT ALLOWANCE				(7) 30-DAY GS MAINT ALLOWANCE				(8) 1 YR ALW PERIOD EQUIP CATEGORY	(9) DEPOT MAINT ALW PERIOD EQUIP	(10) ILLUSTRATIONS	
					(a) 1-20	(b) 21-50	(c) 51-100	(d) 1-20	(e) 21-50	(f) 51-100	(a) FIG NO	(b) ITEM NO				
GROUP 06 CIRCUIT CARD																
P--H-S	5895-116-5404	CIRCUIT CARD ASSEMBLY 368-41687 1 (46859)	EA	1										6	11	
XI-H		BRACKET ANGLE 268-20834-2 (46859)	EA	1										8	1	
P--H		CAPACITOR FIXED MI-A C1 CM05D30LW03 (81349)	EA	1										8	2	
P--H	5910-836-8900	CAPACITOR FIXED PLASTIC C2 C3 CM4L02VDW (81349)	EA	2										8	3	
M--H		PLATE INSTRUCTION 268-20836-2 (46859)	EA	1										8	4	
XI H		PRINTED WIRING BOARD 267 17705 (46859)	EA	1										8	5	
P--H	5945-913-4386	RELAY ARMATURE KL H08M5010 (71482)	EA	1										8	6	
P--H	5905-319-0753	RESISTOR FIXED WIRE WOUND R10 R16 243E1015 (56289)	EA	2										8	7	
P--H	5905-993-4959	RESISTOR VARIABLE R12 330P5000HM3 8W (71450)	EA	1										8	8	
P--H	5905-993-4958	RESISTOR VARIABLE R8 330P10K3-8W (71 50)	EA	1										8	9	
P--H		RESISTOR VARIABLE R14 330P13000HM3-8W (71450)	EA	1										8	10	
P--H	5905-192-3973	RESISTOR FIXED COMPOSITION R9 R11 R15 C20GF471J (81349)	EA	3										8	11	
P--H	5905-185-8510	RESISTOR FIXED COMPOSITION R3 R6 RC20GF103J (81349)	EA	2										8	12	
P--H	5905-195-6453	RESISTOR FIXED COMPOSITION R1 R2 RC20GF562J (81349)	EA	2										8	13	
P--H	5905-279-1870	RESISTOR FIXED COMPOSITION R5 RC20GF132J (81349)	EA	1										8	14	
P--H	5905-279-3504	RESISTOR FIXED COMPOSITION R13 RC20GF472J (81349)	EA	1										8	15	
P--H	5905-279-1761	RESISTOR FIXED COMPOSITION R7 RC20GF622J (81349)	EA	1										8	16	
P--H	5905-993-5984	RESISTOR FIXED FILM. R4 RE70D5621P (81349)	EA	1										8	17	
P--H	5961-577-6214	SEMICONDUCTOR DEVICE DIODE CR3 1M538 (81349)	EA	1										8	18	

SECTION II. REPAIR PARTS LIST (Continued)

(1) SPR CODE	(2) FEDERAL STOCK NUMBER	(3) DESCRIPTION USABLE ON CODE	(4) UNIT OF MEAS	(5) QTY INC IN UNIT	(6) 30-DAY DS MAINT ALLOWANCE			(7) 30-DAY GS MAINT ALLOWANCE			(8) 1 YR ALM PERIOD EQUIP ENTGTY	(9) DEPOT MAINT ALM PER 100 EQUIP	(10) ILLUSTRATIONS	
					(a)	(b)	(c)	(a)	(b)	(c)			(a) FIG NO.	(b) ITEM NO.
					1-20	21-50	51-100	1-20	21-50	51-100				
P-H	5961-842-6181	..SEMICONDUCTOR DEVICE: DIODE: CR1 1W3018B; (81349)	EA	1				*	*	*	*	*	8	19
P-H	5961-848-7007	..SEMICONDUCTOR DEVICE, DIODE: CR2 1W968B; (81349)	EA	1				*	*	*	*	*	8	20
P-H	5961-926-0209	..SEMICONDUCTOR DEVICE, DIODE: CR4 1W3824A; (81349)	EA	1				*	*	*	*	*	8	21
P-H	5930-845-5840	..SWITCH, TOGGLE: S1 T83; (70309)	EA	1				*	*	*	*	*	8	22
P-H	5961-829-0194	..TRANSISTOR: Q3 2N1306; (81349)	EA	1				*	*	*	*	*	8	23
P-H	5961-851-5923	..TRANSISTOR: Q1, Q2 2N1309; (81349)	EA	2				*	*	*	*	*	8	24
GROUP 07 RED/BLACK ISOLATION UNIT														
G-H-S		RED/BLACK ISOLATION UNIT: 368-42333-1; (46859)	EA	V									9	
XI-H		..BOX, ELECTRICAL: 58371-3-4; (78229)	EA	1									9	1
XI-H		..BRACKET, MOUNTING: 268-21004-1; (46859)	EA	2									9	2
P-H		..NUT, FLAIN, HEXAGON: NS35650-104; (96906)	EA	4				*	*	*	*	*	9	3
P-H	5305-059-3663	..SCREW, MACHINE: MS51958-67; (96906)	EA	4				*	*	*	*	*	9	4
P-H		..WASHER, LOCK: MS35338-81; (96906)	EA	4				*	*	*	*	*	9	5
XI-H		..BRACKET, MOUNTING: 268-21004-1; (46859)	EA	2									9	2
P-H	5305-059-3657	..SCREW, MACHINE: MS51958-61; (96906)	EA	4				*	*	*	*	*	9	6
P-H	5310-054-1831	..WASHER, LOCK: MS35338-81; (96906)	EA	4				*	*	*	*	*	9	5
XI-H		..BRACKET, MOUNTING: 268-21004-2; (46859)	EA	4									9	7
P-H		..NUT, FLAIN, HEXAGON: NS35650-104; (96906)	EA	8				*	*	*	*	*	9	3
P-H	5305-059-3663	..SCREW, MACHINE: MS51958-67; (96906)	EA	8				*	*	*	*	*	9	4
P-H		..WASHER, LOCK: MS35338-81; (96906)	EA	8				*	*	*	*	*	9	5
XI-H		..BRACKET, POWER SUPPLY: 268-21594; (46859)	EA	4									9	8
P-H		..NUT, FLAIN, HEXAGON: F40061420; (96195)	EA	8				*	*	*	*	*	9	9
P-H	5305-071-1318	..SCREW, MACHINE: MS51957-83; (96906)	EA	8				*	*	*	*	*	9	10

SECTION II. REPAIR PARTS LIST (Continued)

(1) SNR CODE	(2) FEDERAL STOCK NUMBER	(3) DESCRIPTION REFERENCE NUMBER & MFR CODE	(4) UNIT OF MEAS	(5) QTY INC IN UNIT	(6) 30-DAY DS MAINT ALLOWANCE			(7) 30-DAY GS MAINT ALLOWANCE			(8) 1 YR ALW PER 100 EQUIP	(9) REPUT MAINT ALW PER 100 EQUIP	(10) ILLUSTRATIONS	
					(a)	(b)	(c)	(a)	(b)	(c)			(a) FIG NO	(b) ITEM NO
					1 20	21 50	51-100	1 20	21 50	51-100				
P-H	5310-809-3078	WASHER FLAT MB27183-11 (96906)	EA	8								9	11	
P-H	5310-582-5965	WASHER LOCK MB35338-44 (96906)	EA	8								9	12	
A-H-S		CABINET 368-42090 (46859)	EA	1								9	13	
XI-H		CABLE MARKER VPL 33 (08398)	EA	8										
XI-H		CABLE MARKER VPE7 99 (08398)	EA	8										
XI-H		CABLE MARKER VPS4-66 (08398)	EA	8										
XI-H		CONDUIT MODULE 268-21598 (46859)	EA	2								9	14	
P-H	5935-258-1924	CONNECTOR M58L8H19C (81312)	EA	192								9	15	
P-H		CONNECTOR M48L8H10C (81312)	EA	192								9	16	
P-H		CONTACT ASSEMBLY ELECTRICAL 3-582225-9 (00779)	EA	16								9	17	
P-H		CONTACT ASSEMBLY ELECTRICAL 3-582181-9 (00779)	EA	10								9	18	
XI-H		COVER TERMINAL 268-21234 (46859)	EA	2								9	19	
P-H	5305-059-3657	SCREW MACHINE MB51958-61 (96906)	EA	8								9	6	
P-H		WASHER LOCK MB35338-81 (96906)	EA	8								9	5	
XI-H		COVER ELECTRICAL EQUIPMENT 268-20826 (46859)	EA	48								9	20	
P-H	5305-054-6668	SCREW MACHINE MB51957 43 (96906)	EA	192								9	21	
P-H	5975-280-7921	COVER CONDUIT BOX 58C1 (78229)	EA	1								9	22	
P-H		NUT FLANG HEXAGON MB35650-104 (96906)	EA	2								9	3	
P-H	5305-059-3657	SCREW MACHINE MB51958-61 (96906)	EA	1								9	6	
P-H	5305-059-3663	SCREW MACHINE MB51958-67 (96906)	EA	1								9	4	
P-H		WASHER LOCK MB35338-81 (96906)	EA	2								9	5	
P-		COUPLING ELECTRICAL CONDUIT 90T075 (03743)	EA	2								9	23	
H-H		DECAL 268-21605 (46859)	EA	1								9	24	
XI-H		DUCT AIR 368-42222 (46859)	EA									9	25	
P-H		NUT FLANG HEXAGON P40061420 (96195)	EA	4								9	9	

SECTION II. REPAIR PARTS LIST (Continued)

(1) SNR CODE	(2) FEDERAL STOCK NUMBER	(3) DESCRIPTION REFERENCE NUMBER & NFR CODE	(4) UNIT OF MEAS	(5) QTY INC IN UNIT	(6) 30-DAY DS MAINT ALLOWANCE			(7) 30-DAY GS MAINT ALLOWANCE			(8) 1 YR ALY PERIOD EQUIP CATEGY	(9) DEPOT MAINT ALY PERIOD EQUIP	(10) ILLUSTRATIONS	
					(a)	(b)	(c)	(a)	(b)	(c)			(a) FIG NO	(b) ITEM NO
					1-20	21-50	51-100	1-20	21-50	51-100				
P-H	5305-071-1318	SCREW MACHINE MB51957-83 (96906)	EA	4									9	10
P-H		WASHER 298-21233 (46859)	EA	4									9	26
P-H	5310-809-3078	WASHER FLAT MB27183-11 (96906)	EA	4									9	11
P-H	5310-582-5965	WASHER LOCK MB35338-44 (96906)	EA	4									9	12
XI-H		DUCT AIR 368-42222-1 (46859)	EA	2									9	27
P-H		NUT FLAIN HEXAGON P40061420 (96195)	EA	4									9	9
P-H	5305-071-1318	SCREW MACHINE MB51957 83 (96906)	EA	4									9	10
P-H		WASHER 298-21233 (46859)	EA	4									9	26
P-H	5310-809-3078	WASHER FLAT MB27183-11 (96906)	EA	4									9	11
P-H	5310-582-5965	WASHER LOCK MB35338-44 (96906)	EA	4									9	12
XI-H		DUCT ELECTRICAL 267 17959 (46859)	EA	26									9	28
P-H	5975-893-8544	ELBOW PIPE 4231 (59730)	EA	2									9	29
P-H	5975-280-9224	ELBOW PIPE EL295 (15235)	EA	2									9	30
XI-H		FILLER PLATE 268-21595 (46859)	EA	2									9	31
XI-H		NUT FLAIN HEXAGON MB35649-81 (96906)	EA	12									9	32
P-H	5305-054-6668	SCREW MACHINE MB51957-43 (96906)	EA	12									9	21
P-H		WASHER LOCK MB35338-80 (96906)	EA	12									9	33
P-H		FILTER RADIO FREQUENCY 368-42242 (46859)	EA	1									9	34
P-H		NUT FLAIN HEXAGON MB35650-104 (96906)	EA	4									9	3
P-H	5305-059-3657	SCREW MACHINE MB51958-61 (96906)	EA	2									9	6
P-H	5305-059-3663	SCREW MACHINE MB51958-67 (96906)	EA	2									9	4
P-H	5310-595-6772	WASHER FLAT MB15795-806 (96906)	EA	4									9	35
P-H		WASHER LOCK MB35338-81 (96906)	EA	4									9	5
P-H	5920-857-8909	FUSE INDICATOR ALARM. GNE3-4 (71400)	EA	160									9	36
P-H		GASKET 268-20825 (46859)	EA	96									9	37
P-H		GROMMET PLASTIC MB21266-2 (96906)	EA	2									9	38

SECTION II. REPAIR PARTS LIST (Continued)

(1) SMR CODE	(2) FEDERAL STOCK NUMBER	(3) DESCRIPTION REFERENCE NUMBER & MFR. CODE	(4) UNIT OF MEAS	(5) QTY INC IN UNIT	(6) 30-DAY DS MAINT ALLOWANCE			(7) 30-DAY GS MAINT ALLOWANCE			(8) 1 YR ALW PERIOD EQUIP CNTYCY	(9) DEPOT MAINT ALW PERIOD EQUIP	(10) ILLUSTRATIONS	
					(a)	(b)	(c)	(a)	(b)	(c)			(a) FIG NO.	(b) ITEM NO.
					1-20	21-50	51-100	1-20	21-50	51-100				
P--H		.INSULATOR, STANDOFF: 8573881032-7; (06540)	EA	8				*	*	*	*	*	9	39
P--H		.INSULATOR, STANDOFF: 8591881032-7; (06540)	EA	4				*	*	*	*	*	9	40
P--H	5305-059-3647	.SCREW, MACHINE: MS51958-61; (96906)	EA	4				*	*	*	*	*	9	6
P--H		.WASHER, LOCK: MS35338-81; (96906)	EA	4				*	*	*	*	*	9	5
P--H		.INSULATOR, STANDOFF: 8597881032-7; (06540)	EA	8				*	*	*	*	*	9	41
P--H	5305-059-3647	.SCREW, MACHINE: MS51958-61; (96906)	EA	8				*	*	*	*	*	9	6
P--H		.WASHER, LOCK: MS35338-81; (96906)	EA	8				*	*	*	*	*	9	5
P--H	5305-054-6668	.SCREW, MACHINE: MS51957-43; (96906)	EA	96				*	*	*	*	*	9	21
P--H	5975-642-7261	.NUT, PLAIN, ROUND: 142; (59730)	EA	6				*	*	*	*	*	9	42
X1-H		.PANEL, BLANK: 268-21596; (46859)	EA	2									9	43
P--H	5305-059-3647	.SCREW, MACHINE: MS51958-61; (96906)	EA	6				*	*	*	*	*	9	6
P--H	5310-595-6772	.WASHER, FLAT: MS15795-808; (96906)	EA	8				*	*	*	*	*	9	35
P--H		.WASHER, LOCK: MS35338-81; (96906)	EA	8				*	*	*	*	*	9	5
A--H-S	5920-832-8216	.PANEL, FUSE: SEE GROUP 09 368-41523; (46859)	EA	4									9	44
M--H		.PLATE, DESIGNATION: MS15-140; (71785)	EA	4									9	45
X1-H		.PANEL, PERFORMATED: 268-21597; (46859)	EA	2									9	46
P--H	5305-059-3663	.SCREW, MACHINE: MS51958-67; (96906)	EA	8				*	*	*	*	*	9	4
P--H	5310-595-6772	.WASHER, FLAT: MS15795-808; (96906)	EA	8				*	*	*	*	*	9	35
P--H		.WASHER, LOCK: MS35338-81; (96906)	EA	8				*	*	*	*	*	9	5
A--H-S	5895-832-8083	.POWER SUPPLY ASSEMBLY PP-4830/G: 368-41455-1; (46859)	EA	2									9	47
P--H	5305-059-3657	.SCREW, MACHINE: MS51958-61; (96906)	EA	8				*	*	*	*	*	9	6
P--H	5310-595-6772	.WASHER, FLAT: MS15795-808; (96906)	EA	8				*	*	*	*	*	9	35
P--H		.WASHER, LOCK: MS35338-81; (96906)	EA	8				*	*	*	*	*	9	5
P--H		.CLAMP, CABLE: 3-8-3; (95987)	EA	2				*	*	*	*	*	10	1
P--H	5310-275-9310	.NUT, HEXAGON: MS35650-83; (96906)	EA	2				*	*	*	*	*	10	2
P--H	5305-579-3511	.SCREW, MACHINE: MS35216-42; (96906)	EA	2				*	*	*	*	*	10	3

SECTION II. REPAIR PARTS LIST (Continued)

(1) SPR CODE	(2) FEDERAL STOCK NUMBER	(3) DESCRIPTION REFERENCE NUMBER & MFR. CODE	(4) UNIT OF MEAS	(5) QTY INC IN UNIT	(6) 30-DAY DS MAINT ALLOWANCE			(7) 30-DAY GS MAINT ALLOWANCE			(8) 1 YR ALW PERIOD EQUIP CNTGTY	(9) DEPOT MAINT ALW PERIOD EQUIP	(10) ILLUSTRATIONS	
					(a)	(b)	(c)	(a)	(b)	(c)			(a)	(b)
					1-20	21-50	51-100	1-20	21-50	51-100			FIG NO.	ITEM NO.
P--H	5310-880-5978	..WASHER, FLAT: MB15795-807; (96906)	EA	2				*	*	*	*	*	10	4
P--H		..WASHER, LOCK: MB35338-80; (96906)	EA	2				*	*	*	*	*	10	5
P--H		..CLAMP, CABLE: 1-2-6; (95987)	EA	2				*	*	*	*	*	10	6
P--H	5310-275-9310	..NUT, HEXAGON: MB35650-83; (96906)	EA	2				*	*	*	*	*	10	2
P--H	5305-579-3511	..SCREW, MACHINE: MB35216-42; (96906)	EA	2				*	*	*	*	*	10	3
P--H	5310-880-5978	..WASHER, FLAT: MB15795-807; (96906)	EA	2				*	*	*	*	*	10	4
P--H		..WASHER, LOCK: MS35338-80; (96906)	EA	2				*	*	*	*	*	10	5
P--H		..CONNECTOR: 304CCT; (71785)	EA	2				*	*	*	*	*	10	7
P--H	5935-187-0723	..CONNECTOR: 306CCT; (71785)	EA	2				*	*	*	*	*	10	8
P--H		..CONNECTOR, PRINTED CIRCUIT: 80-6024-2100-00; (95354)	EA	1				*	*	*	*	*	10	9
P--H		..COVER, TERMINAL BOARD: TA15M02-5; (84971)	EA	2				*	*	*	*	*	10	10
A--H-S		..MODULE ASSEMBLY: 368-41456-1; (46859)	EA	2									10	11
XI-H		...CASE, ELECTRICAL EQUIPMENT: CA1; (85604)	EA	1									10	12
XI-H		...CHASSIS, ELECTRICAL EQUIPMENT: 130-0264-6; (85604)	EA	1									10	13
P--H-S	5805-167-7878	...CIRCUIT CARD ASSEMBLY: 368-41746-1; (46859)	EA	1				*	*	*	*	*	10	14
XI-H	PRINTED WIRING BOARD: 267-17729; (46859)	EA	1									11	1
P--H	RELAY, ARMATURE: A130493; (71482)	EA	2				*	*	*	*	*	11	2
P--H	RELAY, ARMATURE: CR4T1006; (71482)	EA	1				*	*	*	*	*	11	3
P--H	5905-962-0537RESISTOR, VARIABLE: 3067P1-201; (80294)	EA	2				*	*	*	*	*	11	4
P--H	5905-171-2006RESISTOR, FIXED, COMPOSITION: RC20GF27LJ; (81349)	EA	4				*	*	*	*	*	11	5
P--H	5905-279-2654RESISTOR, FIXED, COMPOSITION: RC32GF820J; (81349)	EA	1				*	*	*	*	*	11	6
P--H	5961-844-6720SEMICONDUCTOR DEVICE, DIODE: 1W2808B; (81349)	EA	1				*	*	*	*	*	11	7
P--H	5961-685-8967SEMICONDUCTOR DEVICE, DIODE: 1W1614; (81349)	EA	1				*	*	*	*	*	11	8
P--H	5961-577-6214SEMICONDUCTOR DEVICE, DIODE: 1W538; (81349)	EA	5				*	*	*	*	*	11	9
P--H	5961-087-7949SEMICONDUCTOR DEVICE, DIODE: 1W1614R; (81349)	EA	1				*	*	*	*	*	11	10
P--H	5805-806-1856SOCKET, SEMICONDUCTOR: MC15; (04713)	EA	1				*	*	*	*	*	11	11

SECTION II. REPAIR PARTS LIST (Continued)

(1) SHR CODE	(2) FEDERAL STOCK NUMBER	(3) DESCRIPTION REFERENCE NUMBER & MFR. CODE	(4) UNIT OF MEAS	(5) QTY INC IN UNIT	(6) 30-DAY DS MAINT ALLOWANCE			(7) 30-DAY GS MAINT ALLOWANCE			(8) 1 YR ALU PER 100 EQUIP ENTRCE	(9) DEPOT MAINT ALU PER 100 EQUIP	(10) ILLUSTRATIONS	
					(a)	(b)	(c)	(a)	(b)	(c)			(a)	(b)
					1-20	21-50	51-100	1-20	21-50	51-100			FIG NO.	ITEM NO.
P--H	5940-620-8424	...TERMINAL, LUG: MS35431-4; (96906)	EA	1				*	*	*	*	*	11	12
P--H	5961-829-0194	...TRANSISTOR: Q1 2M1308; (81349)	EA	1				*	*	*	*	*	11	13
P--H	5961-851-5923	...TRANSISTOR: Q2 2M1309; (81349)	EA	1				*	*	*	*	*	11	14
P--H		...INSULATOR, STANDOFF: 8752880832-7; (06540)	EA	4				*	*	*	*	*	10	15
P--H	5305-054-6667	...SCREW, MACHINE: MS51957-42; (96906)	EA	8				*	*	*	*	*	10	16
P--H		...WASHER, FLAT: MS15795-42; (96906)	EA	4				*	*	*	*	*	10	17
P--H		...WASHER, LOCK: MS35338-80; (96906)	EA	4				*	*	*	*	*	10	5
P--H		...INSULATOR, STANDOFF: 8753880832-7; (06540)	EA	5				*	*	*	*	*	10	18
P--H	5305-054-6667	...SCREW, MACHINE: MS51957-42; (96906)	EA	10				*	*	*	*	*	10	16
P--H	5310-880-5978	...WASHER, FLAT: MS15795-807; (96906)	EA	10				*	*	*	*	*	10	4
P--H		...WASHER, LOCK: MS35338-80; (96906)	EA	10				*	*	*	*	*	10	5
P--H		...JACK, TIP: TP4 SKT0804RED; (98291)	EA	1				*	*	*	*	*	10	19
P--H	5935-937-6284	...JACK, TIP: TP1, TP2, TP3, TP5 SKT0804RED; (98291)	EA	4				*	*	*	*	*	10	20
P--H	6240-683-0560	...LAMP, INCANDESCENT: 345; (71744)	EA	2				*	*	*	*	*	10	21
P--H	6240-892-4420	...LAMP, GLOW: NE20; (80204)	EA	1				*	*	*	*	*	10	22
P--H	6210-806-9421	...LIGHT, INDICATOR: DS2, DS3 MS25256-4; (96906)	EA	2				*	*	*	*	*	10	23
P--H		...LIGHT, INDICATOR: DS1 MS25257-6; (96906)	EA	1				*	*	*	*	*	10	24
XI-H		...PANEL, FRONT: 268-21065-1; (46859)	EA	1									10	25
X-H		...PANEL, CONNECTOR: RA6-6BP; (85604)	EA	1									10	26
M-H		...PLATE, DESIGNATION: MS5-140; (71785)	EA	2									10	27
A--H-S		...POWER SUPPLY: 368-41808-1; (46859)	EA	4									10	28
A--H-S		...POWER SUPPLY: SEE GROUP 06 PBT7-2CT523; (85604)	EA	1									10	29
P--H	5905-764-3239	...RESISTOR, VARIABLE: 3067P1-202; (80294)	EA	1				*	*	*	*	*	10	30

SECTION II. REPAIR PARTS LIST (Continued)

(1) SPR CODE	(2) FEDERAL STOCK NUMBER	(3) DESCRIPTION REFERENCE NUMBER & MFR. CODE	(4) UNIT OF MEAS	(5) QTY INC IN UNIT	(6) 30-DAY DS MAINT ALLOWANCE			(7) 30-DAY GS MAINT ALLOWANCE			(8) 1 YR ALW PERIOD EQUIP CHNGCY	(9) DEPOT MAINT ALW PERIOD EQUIP	(10) ILLUSTRATIONS	
					(a)	(b)	(c)	(a)	(b)	(c)			(a) FIG NO.	(b) ITEM NO.
					1-20	21-50	51-100	1-20	21-50	51-100				
P--H	5905-279-2019	...RESISTOR, FIXED, COMPOSITION: RC20GF512J; (81349)	EA	1				*	*	*	*	*	10	31
XI-H		..SHELF: RA6-6; (85604)	EA	1									10	32
P--H	5940-983-6046	..TERMINAL BOARD: TB1, TB2 3TTB5; (81349)	EA	2				*	*	*	*	*	10	33
P--H		..NUT, FLAIN, HEXAGON: MS35650-64; (96906)	EA	8				*	*	*	*	*	10	34
P--H		..SCREW, MACHINE: MS35216-28; (96906)	EA	8				*	*	*	*	*	10	35
P--H		..WASHER, LOCK: MS35338-79; (96906)	EA	8				*	*	*	*	*	10	36
XI-H		..SHIELD: 268-21005; (46859)	EA	2									9	48
XI-H		..SPACER, SLEEVE: 268-21003; (46859)	EA	8									9	49
P--H		..NUT, FLAIN, HEXAGON: P40061420; (96195)	EA	8				*	*	*	*	*	9	9
P--H	5305-071-1318	..SCREW, MACHINE: MS51957-83; (96906)	EA	8				*	*	*	*	*	9	10
P--H	5310-809-3078	..WASHER, FLAT: MS27183-11; (96906)	EA	8				*	*	*	*	*	9	11
P--H	5310-582-5965	..WASHER, LOCK: MS35338-44; (96906)	EA	8				*	*	*	*	*	9	12
P--H		..STANDOFF: 85768S0632-7; (06540)	EA	8				*	*	*	*	*	9	50
XI-H		..STRAP, RETAINING: 268-21002; (46859)	EA	4									9	51
P--H	5305-059-3657	..SCREW, MACHINE: MS51958-61; (96906)	EA	8				*	*	*	*	*	9	6
P--H		..WASHER, LOCK: MS35338-81; (96906)	EA	8				*	*	*	*	*	9	5
XI-H		..SUPPORT, SHIELD: 268-21009; (46859)	EA	4									9	52
P--H		..TERMINAL BOARD: 15-140; (71785)	EA	4				*	*	*	*	*	9	53
P--H		..NUT, FLAIN, HEXAGON: MS35649-64; (96906)	EA	8				*	*	*	*	*	9	54
P--H	5305-054-6656	..SCREW, MACHINE: MS51957-32; (96906)	EA	8				*	*	*	*	*	9	55
P--H	5310-722-5998	..WASHER, FLAT: MS15795-805; (96906)	EA	8				*	*	*	*	*	9	56
P--H		..WASHER, LOCK: MS35338-79; (96906)	EA	8				*	*	*	*	*	9	57
XI-H		..TERMINAL, CLAMP: 268-21327-1; (46859)	EA	2									9	58
XI-H		..NUT, FLAIN, HEXAGON: MS35649-84; (96906)	EA	4				*	*	*	*	*	9	32
P--H	5305-054-6677	..SCREW, MACHINE: MS51957-52; (96906)	EA	4				*	*	*	*	*	9	59
P--H		..WASHER, LOCK: MS35338-80; (96906)	EA	4				*	*	*	*	*	9	33

SECTION II. REPAIR PARTS LIST (Continued)

(1) SNR CODE	(2) FEDERAL STOCK NUMBER	(3) DE.SCRPTION REFERENCE NUMBER & MFR CODE	(4) UNIT OF MEAS	(5) QTY INC IN UNIT	(6) 30 DAY DS MAINT ALLOWANCE			(7) 30 DAY GS MAINT ALLOWANCE			(8) 1 YR ALY PERIOD EQUIP CONTCY	(9) DEPOT MAINT ALY PERIOD EQUIP	(10) ILLUSTRATIONS	
					()	(b)	()	()	(b)	()			()	(b)
					1	20	51	100	1	20			51	100
X1 H		TERMINAL CLAMP 268-21327 1 (46859)	EA	2								9	58	
X1 H		NUT PLAIN HEXAGON MS35649-84 (96906)	EA	4								9	32	
P--H	5305-054-6681	SCREW MACHINE MS51957 54 (96906)	EA	4								9	60	
P--H		WASHER LOCK MS35338-80 (96906)	EA	4								9	33	
X1 H		TERMINAL CLAMP 268-21327 2 (46859)	EA	2								9	61	
X1 H		NUT PLAIN HEXAGON MS35649 84 (96906)	EA	4								9	32	
P--H	5305-054-9226	SCREW MACHINE MS51957 57 (96906)	EA	4								9	62	
P--H		WASHER LOCK MS35338-80 (96906)	EA	4								9	33	
P--		TERMINAL LUG 34142 (00779)	EA	78								9	63	
P--H	5940-577-3711	TERMINAL LUG 31889 (00779)	EA	4								9	64	
P--	5305-059-3663	SCREW MACHINE MS51958-67 (96906)	EA	4								9	4	
P--H	5940-621-2195	TERMINAL TAPERED PIN 41646 (89110)	EA	20 0								9	65	
P--		TY RAP TY35M (59730)	EA	4								9	66	
GROUP 08 POWER SUPPLY														
A--H S		POWER SUPPLY P8K7 207523 (85604)	EA	1								10	29	
A--H-S		CIRCUIT CARD ASSEMBLY 235 0169 (85604)	EA	1								10	42	
P--	5910-904-6431	CAPACITOR FIXED ELECTROLYTIC 201 76F 2LW680 (24446)	EA	1								12	1	
P--H	5910-824-0841	CAPACITOR FIXED ELECTROLYTIC C212 43P7938AAL (01002)	EA	1								12	2	
P--	5910-985-0101	CAPACITOR IXED ELECTROLYTIC C202 76F02EM271 (24446)	EA	1								12	3	
--H	5910-832-8492	CAPACITOR IXED ELECTROLYTIC C211 213 76F02HF151 (24446)	EA	2								12	4	
P--H	5910-814-0839	CAPACITOR FIXED ELECTROLYTIC 204 43P7576AAL (01002)	EA	1								12	5	
P--	5910-879-4544	CAPACITOR FIXED ELECTROLYTIC 203A C203B 43P757AAL (01002)	EA	2								12	6	
P--		CAPACITOR FIXED PLASTIC 207 C124 663F20492W2 (84421)	EA	2								12	7	

SECTION II. REPAIR PARTS LIST (Continued)

(1) SMR CODE	(2) FEDERAL STOCK NUMBER	(3) DESCRIPTION REFERENCE NUMBER & MFR. CODE	(4) UNIT OF MEAS USABLE ON CODE	(5) QTY INC IN UNIT	(6) 30-DAY DS MAINT ALLOWANCE			(7) 30-DAY GS MAINT ALLOWANCE			(8) 1 YR ALW PER 100 EQUIP CNTGTY	(9) DEPOT MAINT ALW PER 100 EQUIP	(10) ILLUSTRATIONS	
					(a) 1-20	(b) 21-50	(c) 51-100	(a) 1-20	(b) 21-50	(c) 51-100			(a) FIG NO.	(b) ITEM NO.
					P--H		..CAPACITOR, FIXED, PLASTIC: C206 X663F50392W2; (84411)	EA	1					
P--H	5910-841-7971	..CAPACITOR, FIXED, PLASTIC: C210 X663F10406W2; (84411)	EA	1				*	*	*	*	*	12	9
P--H	5910-439-0294	..CAPACITOR, FIXED, PLASTIC: C209 X663F20352W2; (84411)	EA	1				*	*	*	*	*	12	10
P--H	5905-279-1897	..RESISTOR, FIXED, COMPOSITION: R124 RC20GF56GJ; (81349)	EA	1				*	*	*	*	*	12	11
P--H		..RESISTOR, FIXED, WIRE WOUND: R205 VAL3-751J; (83777)	EA	1				*	*	*	*	*	12	12
P--H		..RESISTOR, FIXED, WIRE WOUND: R219 TS3W0R25H; (02985)	EA	1				*	*	*	*	*	12	13
P--H		..RESISTOR, FIXED, WIRE WOUND: R206, R207 9-16GA46-3W0R2J; (24681)	EA	2				*	*	*	*	*	12	14
P--H	5905-865-0361	..RESISTOR, FIXED, WIRE WOUND: R224 TS1W562F; (02985)	EA	1				*	*	*	*	*	12	15
P--H	5905-848-4784	..RESISTOR, VARIABLE: R221 115-1789; (85604)	EA	1				*	*	*	*	*	12	15
P--H	5905-279-2593	..RESISTOR, FIXED, COMPOSITION: R201 RC20GF24LJ; (81349)	EA	1				*	*	*	*	*	12	17
P--H	5905-252-4018	..RESISTOR, FIXED, COMPOSITION: R210 RC20GF470J; (81349)	EA	1				*	*	*	*	*	12	18
P--H	5905-190-8889	..RESISTOR, FIXED, COMPOSITION: R208 RC20GF10LJ; (81349)	EA	1				*	*	*	*	*	12	19
P--H	5905-195-6800	..RESISTOR, FIXED, COMPOSITION: R223 RC20GF56LJ; (81349)	EA	1				*	*	*	*	*	12	20
P--H	5905-299-1965	..RESISTOR, FIXED, COMPOSITION: R203 RC20GF30LJ; (81349)	EA	1				*	*	*	*	*	12	21
P--H	5905-190-8883	..RESISTOR, FIXED, COMPOSITION: R216 RC20GF10GJ; (81349)	EA	1				*	*	*	*	*	12	22
P--H	5905-185-8510	..RESISTOR, FIXED, COMPOSITION: R209 RC20GF103J; (81349)	EA	1				*	*	*	*	*	12	23
P--H	5905-195-6806	..RESISTOR, FIXED, COMPOSITION: R212 RC20GF102J; (81349)	EA	1				*	*	*	*	*	12	24
P--H	5905-279-1877	..RESISTOR, FIXED, COMPOSITION: R202 RC20GF242J; (81349)	EA	1				*	*	*	*	*	12	25
P--H	5905-279-1751	..RESISTOR, FIXED, COMPOSITION: R215 RC20GF302J; (81349)	EA	1				*	*	*	*	*	12	26

SECTION II. REPAIR PARTS LIST (Continued)

(1) SHR CODE	(2) FEDERAL STOCK NUMBER	(3) DESCRIPTION REFERENCE NUMBER & MFR CODE	(4) UNIT OF MEAS	(5) QTY INC IN UNIT	(6) 30-DAY DS MAINT ALLOWANCE			(7) 30-DAY GS MAINT ALLOWANCE			(8) 1 YR ALW PERIOD EQUIP CATEGY	(9) DEPOT MAINT ALW PERIOD EQUIP	(10) ILLUSTRATIONS	
					() 1	(b) 21	() 50	() 1	(b) 21	() 50			(a) FIG NO	(b) ITEM NO
					() 1	(b) 21	() 50	() 1	(b) 21	() 50				
P--H	5905-279-2673	RESISTOR FIXED COMPOSITION R204 RC20GP622J (81349)	EA	1								12	27	
P--H	5905-192-3973	RESISTOR FIXED COMPOSITION R211 RC20GP471J (81349)	EA	1								12	28	
P--H	5905-279-1880	RESISTOR FIXED COMPOSITION R213 RC20GP272J (81349)	EA	1								12	29	
P--H	5905-994-0468	RESISTOR FIXED FILM R218 CBSTO-2442F (35009)	EA	1								12	30	
P--H	5905-782-4066	RESISTOR FIXED FILM R217 CBSTO-6811F (35009)	EA	1								12	31	
P--H	5905-928-1423	RESISTOR FIXED FILM R222 CBSTO-7500F 35009)	EA	1								12	32	
P--H	5905-985-6440	RESISTOR FIXED FILM R220 CBSTO-1002F (35009)	EA	1								12	33	
P--H	6130-898-1479	SEMICONDUCTOR DEVICE DIODE CR211 CR213 CR215 124-0178 (85604)	EA	3								12	34	
P--H	5961-936-8405	SEMICONDUCTOR DEVICE DIODE CR204 CR205 SM510 (11961)	EA	2								12	35	
P--	5961-866-5454	SEMICONDUCTOR DEVICE DIODE CR212 1N821 (81349)	EA	1								12	36	
P--H	5961-932-7031	SEMICONDUCTOR DEVICE DIODE CR2 1 THRU CR203 CR206 CR207 CR214 SM110 (11961)	EA	6								12	37	
P--H		SEMICONDUCTOR DEVI E DIODE CR208 THRU CR210 SV125 (03877)	EA	3								12	38	
P--H	5961-838-1141	TRANSISTOR Q201 Q203 Q205 THRU Q207 2W336A (80131)	EA	5								12	39	
P--	5961-764-2572	TRANSISTOR Q202 Q204 Q208 2W1131A (80131)	EA	3								12	40	
P--	5920-199-9498	FUSE CARTRIDGE F101 MDL5-10 (71400)	EA	1								10	37	
P--H	6240-703-6614	LIGHT INDICATOR DS101 39-604-1475 (72619)	EA	1								10	38	
P--H	5905-061-0022	RESISTOR FIXED WIRE WOUND R101 MOR10-152J (83777)	EA	1								10	39	
P--	5950-824-0842	TRANSFORMER POWER T1 1 100-1541 (85604)	EA	1								10	40	
P--H	5961-917-3478	TRANSISTOR Q101 Q102 40251 (02735)	EA	2								10	41	

SECTION II. REPAIR PARTS LIST (Continued)

(1) SNR CODE	(2) FEDERAL STOCK NUMBER	(3) DESCRIPTION REFERENCE NUMBER & MFR. CODE	(4) UNIT OF MEAS	(5) QTY INC IN UNIT	(6) 30-DAY DS MAINT ALLOWANCE			(7) 30-DAY GS MAINT ALLOWANCE			(8) 1 YR ALW PER 100 EQUIP CATG	(9) DEPOT MAINT ALW PER 100 EQUIP	(10) ILLUSTRATIONS	
					(a) 1-20	(b) 21-50	(c) 51-100	(a) 1-20	(b) 21-50	(c) 51-100			(a) FIG NO.	(b) ITEM NO.
					GROUP 09 FUSE PANEL									
A-H-6	5920-832-8216	PANEL, FUSE: 368-41523; (46859)	EA	1									9	44
XI-H		.BRACKET, MOUNTING: 268-19232; (46859)	EA	2									13	1
P-H		.NUT, FLAIN, HEXAC ME35649-64; (9690)	EA	2				*	*	*	*	*	13	2
P-H	5305-763-6963	.SCREW, MACHINE: ME51959-28; (96906)	EA	2				*	*	*	*	*	13	3
P-H	5305-054-6652	.SCREW, MACHINE: ME51957-28; (96906)	EA	2				*	*	*	*	*	13	4
P-H	5310-880-5976	.WASHER, FLAT: ME15795-806; (96906)	EA	2				*	*	*	*	*	13	5
P-H		.WASHER, LOCK: ME35338-79; (96906)	EA	2				*	*	*	*	*	13	6
XI-H		.BRACKET, RELAY: 268-19204; (46859)	EA	1									13	7
XI-H		.COVER, ELECTRICAL CONNECTOR: RP14261G1; (71482)	EA	1									13	8
P-H		.NUT, FLAIN, HEXAGON: ME35649-64; (96906)	EA	2				*	*	*	*	*	13	2
P-H	5305-727-8832	.SCREW, MACHINE: ME51959-29; (96906)	EA	2				*	*	*	*	*	13	9
P-H	5305-054-6654	.SCREW, MACHINE: ME51957-30; (96906)	EA	1				*	*	*	*	*	13	10
P-H		.WASHER, LOCK: ME35338-79; (96906)	EA	2				*	*	*	*	*	13	6
XI-H		.BRACKET, DOUBLE ANGLE: 268-20980; (46859)	EA	1									13	11
P-H		.CLAMP, LOOP: ME25281-3; (96906)	EA	1				*	*	*	*	*	13	12
P-H		.CLAMP, LOOP: ME25281-4; (96906)	EA	4				*	*	*	*	*	13	13
P-H		.NUT, FLAIN, HEXAGON: ME35649-64; (96906)	EA	2				*	*	*	*	*	13	2
P-H	5305-054-6652	.SCREW, MACHINE: ME51957-28; (96906)	EA	2				*	*	*	*	*	13	4
P-H	5305-054-6654	.SCREW, MACHINE: ME51957-30; (96906)	EA	1				*	*	*	*	*	13	10
P-H	5310-722-5998	.WASHER, FLAT: ME15795-805; (96906)	EA	2				*	*	*	*	*	13	14
P-H		.WASHER, LOCK: ME35338-79; (96906)	EA	2				*	*	*	*	*	13	6
P-H		.CLAMP, LOOP: ME25281-3; (96906)	EA	2				*	*	*	*	*	13	12
P-H		.CLAMP, LOOP: ME25281-4; (96906)	EA	4				*	*	*	*	*	13	13
P-H		.NUT, FLAIN, HEXAGON: ME35649-64; (96906)	EA	1				*	*	*	*	*	13	2

SECTION II. REPAIR PARTS LIST (Continued)

(1) SNR CODE	(2) FEDERAL STOCK NUMBER	(3) DESCRIPTION REFERENCE NUMBER & IFR. CODE	(4) UNIT OF MEAS.	(5) QTY INC IN UNIT	(6) 30-DAY DS MAINT ALLOWANCE			(7) 30-DAY GS MAINT ALLOWANCE			(8) 1 YR ALW PER 100 EQUIP CENTGY	(9) DEPOT MAINT ALW PER 100 EQUIP	(10) ILLUSTRATIONS	
					(a)	(b)	(c)	(a)	(b)	(c)			(a)	(b)
					1-20	21-50	51-100	1-20	21-50	51-100			FIG NO.	ITEM NO.
P--H	5305-054-5637	.SCREW, MACHINE: MS51957-3; (96906)	EA	1								13	15	
P--H	5310-722-5998	.WASHER, FLAT: MS15795-805; (96906)	EA	1								13	14	
P--H		.WASHER, LOCK: MS35338-79; (96906)	EA	1								13	6	
P--H	5935-665-7965	.CONNECTOR, PLUG, ELECTRICAL: F304AB; (71785)	EA	1								13	16	
XI-H		.COVER, ELECTRICAL CONNECTOR: RP14261G1; (71482)	EA	1								13	8	
P--H	5920-968-3238	.FUSEHOLDER: HLT; (71400)	EA	40								13	17	
P--H	5325-202-2515	.GROMMET, RUBBER: 1043-1C; (72653)	EA	1								13	18	
XI-H		.HOLDER, CARD: 268-19265-1; (46859)	EA	2								13	19	
P--H		.NUT, FLAT, HEXAGON: MS35649-64; (96906)	EA	4								13	2	
P--H	5305-764-2966	.SCREW, MACHINE: MS51959-2; (96906)	EA	2								13	20	
P--H	5305-054-6654	.SCREW, MACHINE: MS51957-30; (96906)	EA	1								13	10	
P--H	5305-054-6652	.SCREW, MACHINE: MS51957-28; (96906)	EA	3								13	4	
P--H	5130-722-5998	.WASHER, FLAT: MS15795-805; (96906)	EA	4								13	14	
P--H		.WASHER, LOCK: MS35338-79; (96906)	EA	4								13	6	
XI-H		.HOLDER, CARD: 268-19265-1; (46859)	EA	2								13	19	
P--H		.NUT, FLAT, HEXAGON: MS35649-64; (96906)	EA	2								13	2	
P--H	5305-764-2966	.SCREW, MACHINE: MS51959-2; (96906)	EA	2								13	20	
P--H	5305-719-5064	.SCREW, MACHINE: MS51959-30; (96906)	EA	1								13	21	
P--H	5305-054-6654	.SCREW, MACHINE: MS51957-30; (96906)	EA	2								13	10	
P--H	5310-722-5998	.WASHER, FLAT: MS15795-805; (96906)	EA	2								13	14	
P--H		.WASHER, LOCK: MS35338-79; (96906)	EA	2								13	6	
P--H	6240-683-0560	.LAMP, GLOW: 345; (71744)	EA	1								13	22	
P--H	5930-995-2400	.LIGHT-SWITCH: 192-0104-1471-604; (72619)	EA	1								13	23	
XI-H		.PANEL, BLANK: 268-20958; (46859)	EA	1								13	24	
XI-H		.PANEL, BLANK: 268-20959; (46859)	EA	1								13	25	

SECTION II. REPAIR PARTS LIST (Continued)

(1) SNR CODE	(2) FEDERAL STOCK NUMBER	(3) DESCRIPTION REFERENCE NUMBER & MFR. CODE	(4) UNIT OF MEAS	(5) QTY INC IN UNIT	(6) 30-DAY DS MAINT ALLOWANCE			(7) 30-DAY GS MAINT ALLOWANCE			(8) 1 YR ALW PER 100 EQUIP	(9) DEPOT MAINT ALW PER 100 EQUIP	(10) ILLUSTRATIONS	
					(a) 1-20	(b) 21-50	(c) 51-100	(a) 1-20	(b) 21-50	(c) 51-100			(a) FIG NO.	(b) ITEM NO.
					P--H		.NUT, PLAIN, HEXAGON: MS35649-64; (96906)	EA	1					
P--H	5305-719-5064	.SCREW, MACHINE: MS51959-30; (96906)	EA	1				*	*	*	*	13	21	
P--H	5305-054-6652	.SCREW, MACHINE: MS51957-28; (96906)	EA	4				*	*	*	*	13	4	
P--H	5310-722-5998	.WASHER, FLAT: MS15795-805; (96906)	EA	1				*	*	*	*	13	14	
P--H	5310-880-5976	.WASHER, FLAT: MS15795-806; (96906)	EA	4				*	*	*	*	13	5	
P--H		.WASHER, LOCK: MS35338-79; (96906)	EA	1				*	*	*	*	13	6	
P--H	5945-064-3458	.RELAY, ARMATURE: JDP64C24; (71482)	EA	1				*	*	*	*	13	26	
P--H		.RESISTOR, FIXED, WIREWOUND: 247E3015; (56289)	EA	1				*	*	*	*	13	27	
P--H	5905-958-7253	.RESISTOR, FIXED, WIREWOUND: 247E5005; (56289)	EA	1				*	*	*	*	13	28	
P--H	5905-070-3369	.RESISTOR, FIXED, WIREWOUND: 247E4015; (56289)	EA	1				*	*	*	*	13	29	
P--H	5935-257-7196	.CONNECTOR, PLUG, ELECTRICAL: P306AB; (71785)	EA	1				*	*	*	*	13	30	
P--H		.NUT, PLAIN, HEXAGON: MS35649-64; (96906)	EA	2				*	*	*	*	13	2	
P--H	5305-054-6652	.SCREW, MACHINE: MS51957-28; (96906)	EA	2				*	*	*	*	13	4	
P--H	5310-722-5998	.WASHER, FLAT: MS15795-805; (96906)	EA	2				*	*	*	*	13	14	
P--H		.WASHER, LOCK: MS35338-79; (96906)	EA	2				*	*	*	*	13	6	
P--H	5305-054-5653	.SCREW, MACHINE: MS51957-19; (96906)	EA	4				*	*	*	*	13		
P--H	5961-577-6214	.SEMICONDUCTOR, DIODE: 1N538; (81349)	EA	4				*	*	*	*	13	31	
P--H		.SOCKET, RELAY: RP14391G3; (71482)	EA	1				*	*	*	*	13	32	
P--H		.NUT, PLAIN, HEXAGON: MS35649-44; (96906)	EA	4				*	*	*	*	13	33	
P--H		.NUT, PLAIN, HEXAGON: MS35649-64; (96906)	EA	1				*	*	*	*	13	2	
P--H	5305-764-2966	.SCREW, MACHINE: MS51959-2; (96906)	EA	4				*	*	*	*	13	20	
P--H	5305-054-6654	.SCREW, MACHINE: MS51957-30; (96906)	EA	1				*	*	*	*	13	10	
P--H		.STRIP, FUSE: 268-19221-4; (46859)	EA	2				*	*	*	*	13	34	
P--H		.WASHER, LOCK: MS35338-79; (96906)	EA	1				*	*	*	*	13	6	
P--H	5310-042-9609	.WASHER, LOCK: MS35338-78; (96906)	EA	4				*	*	*	*	13	35	
P--H		.STRIP, FUSE: 268-19221-4; (96906)	EA	4				*	*	*	*	13	34	

SECTION II. REPAIR PARTS LIST (Continued)

(1) SNR CODE	(2) FEDERAL STOCK NUMBER	(3) DESCRIPTION REFERENCE NUMBER & MFR CODE	(4) UNIT OF MEAS	(5) QTY INC IN UNIT	(6) 30-DAY DS MAINT ALLOWANCE			(7) 30-DAY GS MAINT ALLOWANCE			(8) 1 YR ALY PERIOD EQUIP PER 100 EQUIP EXCHG	(9) DEPOT MAINT ALY PER 100 EQUIP	(10) ILLUSTRATIONS	
					(a)	(b)	(c)	(a)	(b)	(c)			(a)	(b)
					1 20	21 50	51-100	1 20	21 50	51-100			FIG NO	ITEM NO
P-H		RUF PLAIN HEXAGON NB35649-64 (96906)	EA	2								13	2	
P-H		RUF PLAIN HEXAGON NB35649-44 (96906)	EA	2								13	33	
P-H	5305-727-8832	SCREW MACHINE NB51959-29 (96906)	EA	2								13	9	
P-H	5305-727-8831	SCREW MACHINE NB51959-19 (96906)	EA	2								13	36	
P-H		WASHER LOCK NB35338-79 (96906)	EA	2								13	6	
P-H	5310-042-9609	WASHER LOCK NB35338-78 (96906)	EA	2								13	35	
P-H	5940-763-7672	TERMINAL BOARD AD (91967)	EA	2								13	37	
P-H	5305-054-6656	SCREW MACHINE NB51957 32 (96906)	EA	2								13	38	
P-H		WASHER LOCK NB35338-79 (96906)	EA	2								13	6	
P-H	5940-763-0923	TERMINAL BOARD 582440-9 (00779)	EA	2								13	39	
P-H		RUF PLAIN HEXAGON NB35649-64 (96906)	EA	4								13	2	
P-H	5305-054-6652	SCREW MACHINE NB51957-28 (96906)	EA	2								13	4	
P-H	5305-054-6674	SCREW MACHINE NB51957-49 (96906)	EA	2								13	40	
P-H	5310-722-5998	WASHER FLAT NB15795-805 (96906)	EA	2								13	14	
P-H	5310-880-5978	WASHER FLAT NB15795-807 (96906)	EA	2								13	41	
P-H		WASHER LOCK NB35338-79 (96906)	EA	2								13	6	
P-H		WASHER LOCK NB35338-80 (96906)	EA	2								13	42	
P-H	5970-065-8615	TERMINAL LUG 1411B (88245)	EA	4								13	43	
P-H	5305-054-5646	SCREW MACHINE NB51957 12 (96906)	EA	1								13	44	
P-H		WASHER FLAT 268-21138 (46859)	EA	1								13	45	
P-H	5310-042-9609	WASHER LOCK NB35338-78 (96906)	EA	1								13	35	
W-H		WIRING HARNESS 461-4767 (46859)	EA	1								13	46	
W-H		WIRING HARNESS 461-4768 (46859)	EA	1								13	47	
A-H-S		GROUP 10 SWITCH ASSEMBLY ISOLATION SWITCH P651 (87216)	EA	1								14		

SECTION II. REPAIR PARTS LIST (Continued)

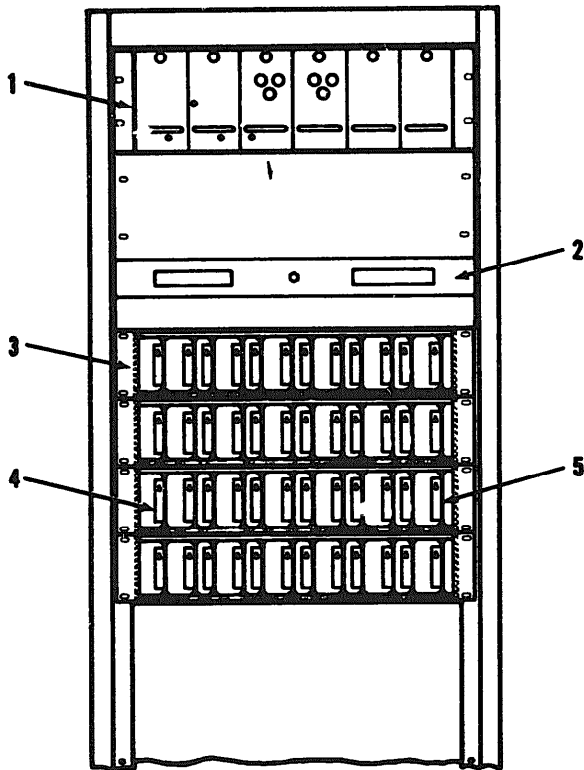
(1) SHR CODE	(2) FEDERAL STOCK NUMBER	(3) DESCRIPTION REFERENCE NUMBER & MFR CODE	(4) UNIT OF MEAS	(5) QTY INC IN UNIT	(6) 30-DAY DS MAINT ALLOWANCE			(7) 30-DAY GS MAINT ALLOWANCE			(8) 1 YR ALM PERIOD EQUIP ENTIRELY	(9) DEPOT MAINT ALM PERIOD EQUIP	(10) ILLUSTRATIONS	
					(a)	(b)	(c)	(a)	(b)	(c)			(a)	(b)
					1 20	21 50	51-100	1 20	21 50	51-100			(a) FIG NO	(b) ITEM NO
P-H	5895-759-8182	CASE ASSEMBLY DEL775FA5 (87216)	EA	1				*	*	*	*	*	14	
P-H	7440-033-9610	HOUSING CHLL DEL775FA8 (87216)	EA	1									14	2
A-H-S		INPUT MODULE DEL775FA6 (87216)	EA	1									14	3
P-H	5895-759-8199	CIRCUIT SUBASSEMBLY DEL775FAGA (87216)	EA	1										
P-H	5935-259-3604	CONNECTOR RECEPTACLE ELECTRICAL M4FLRN (81312)	EA	1									14	4
XI-H		COVER MODULE DEL775F102 (87216)	EA	1									14	5
P-H		NUT SELF-LOCKING HEXAGON DEL775FA303 (87216)	EA	1										
A-H-S		OUTPUT MODULE DEL775FA7 (87216)	EA	1									14	6
P-H	5895-759-8204	CIRCUIT SUBASSEMBLY DEL775FATA (87216)	EA	1										
P-H	5935-259-3604	CONNECTOR RECEPTACLE ELECTRICAL M4FLRN (81312)	EA	1									14	4
P-H	5935-259-3988	CONNECTOR RECEPTACLE ELECTRICAL M5FLRN (81312)	EA	1									14	7
XI-H		COVER MODULE DEL775F103 (87216)	EA	1									14	8
XI-H		SHIELD GASKET ELECTRICAL DEL775F202 (87216)	EA	1										
GROUP 11 CASE ASSEMBLY														
G-H-S		CASE ELECTRICAL EQUIPMENT 398-7572 2 (46859)	EA	1									15	
XI-H		CABINET ELECTRICAL EQUIPMENT 398-7574 (46859)	EA	1									15	1
P-H	7440-935-6179	GASKET 297 10296 (46859)	EA	1									5	2
P-H	7440-935-6178	GASKET 297 10295 (46859)	EA	1									15	3
XI-H		PANEL BLANK 298-5519 (46859)	EA	1									15	4
P-H		NUT PLAIN HEXAGON M335649-82 (96906)	EA	10									15	5
P-H	5305-063-3503	SCREW MACHINE M324693850 (96906)	EA	10									15	6
P-H	5310-209-5309	WASHER LOCK M335338-23 (96906)	EA	10									15	7
XI-H		PANEL BLANK 298-5520 (46859)	EA	1									15	8
P-H	5305-984-6193	SCREW MACHINE M335206-245 (96906)	EA	10									15	9

SECTION II. REPAIR PARTS LIST (Continued)

(1) SNR CODE	(2) FEDERAL STOCK NUMBER	(3) DESCRIPTION REFERENCE NUMBER & MFR CODE USABLE ON CODE	(4) UNIT OF MEAS	(5) QTY INC IN UNIT	(6) 30-DAY DS MAINT ALLOWANCE					(7) 30-DAY GS MAINT ALLOWANCE			(8) 1 YR ALM PERIOD EQUIP CMTG	(9) DEPOT MAINT ALM PERIOD EQUIP	(10) ILLUSTRATIONS	
					(a)	(b)	(c)	(d)	(e)	(f)	(g)	(h)			(i)	(b) ITEM NO
					1 20	21 50	51 100	()	()	()	()	()			()	
GROUP 12 AUDIO FILTER UNITS																
P--H-S		FILTER UNIT F-1145/FYA 100001408-003 (46859)	EA	V												
P--H-S	5895-938-3059	FILTER UNIT F 1157/FYA 100001408-001 (46859)	EA	V												
GROUP 13 RF FILTER UNITS																
P--H-S		FILTER UNIT F 1146/FYA 100001409-101 (46859)	EA	V												
P--H-S		FILTER UNITS F 1147/FYA 11 100001409-102 (46859)	EA	V												
P--H-S		FILTER UNIT F 1148/FYA 11 100001409-301 (46859)	EA	V												
P--H-S		FILTER UNITS F 1151/FYA 12 10000149-103 (46859)	EA	V												
P--H-S		FILTER UNIT F 1152/FYA 12 100001409-302 (46859)	EA	V												
P--H-S		FILTER UNIT F-1153/FYA-13 100001409-104 (46859)	EA	V												
P--H-S	5895-936-8393	FILTER UNIT F 1154/FYA 13 100001409-303 (46859)	EA	V												
P--H-S	5895-936-5513	FILTER UNIT F 1155/FYA 14 100001409-105 (46859)	EA	V												
P--H-S	5895-8397	FILTER UNIT F 1156/FYA 14 100001409-304 (46859)	EA	V												
P--H-S	5895-938-3058	FILTER UNIT F 1158/FYA 15 100001409-106 (46859)	EA	V												
P--H-S	5895-936-55 5	FILTER UNIT F 1159/FYA 100001409-305 (46859)	EA	V												
P--H-S	5895-937-7869	FILTER UNIT F 1160/FYA 16 100001409-107 (46859)	EA	V												
P--H-S	5895-937-7868	FILTER UNIT F 1161/FYA 100001409-306 (46859)	EA	V												
P--H-	5895-937-7941	FILTER UNIT 1162/FYA 17 10000 409-108 (46859)	EA	V												
P--H-S	5895-937-7873	FILTER UNIT F 1163/FYA 7 100001409-307 (46859)	EA	V												
P--H-S	5895-937-7957	FILTER UNIT F 1164/FYA 18 100001409-109 (46859)	EA	V												
P--H-S	5895-937-7958	FILTER UNIT F 1165/FYA 18 100001409-308 (46859)	EA	V												
P--H-S	5895-937-7939	FILTER UNIT F 1166/ YA-19 10000 409-110 (46859)	EA	V												
P--H-S		FILTER UNIT F 1167/FYA-19 100001409-309 (46859)	EA	V												
P--H-S		FILTER UNIT F 1173/FYA 20 100001409-111 (46859)	EA	V												
P--H-S	5895-936-8395	FILTER UNIT F 1174/FYA-2 0001409-112 (46859)	EA	V												
P--H-	5895-936-55 5	FILTER UNIT F 1175/FYA 22 100001409-113 (46859)	EA	V												

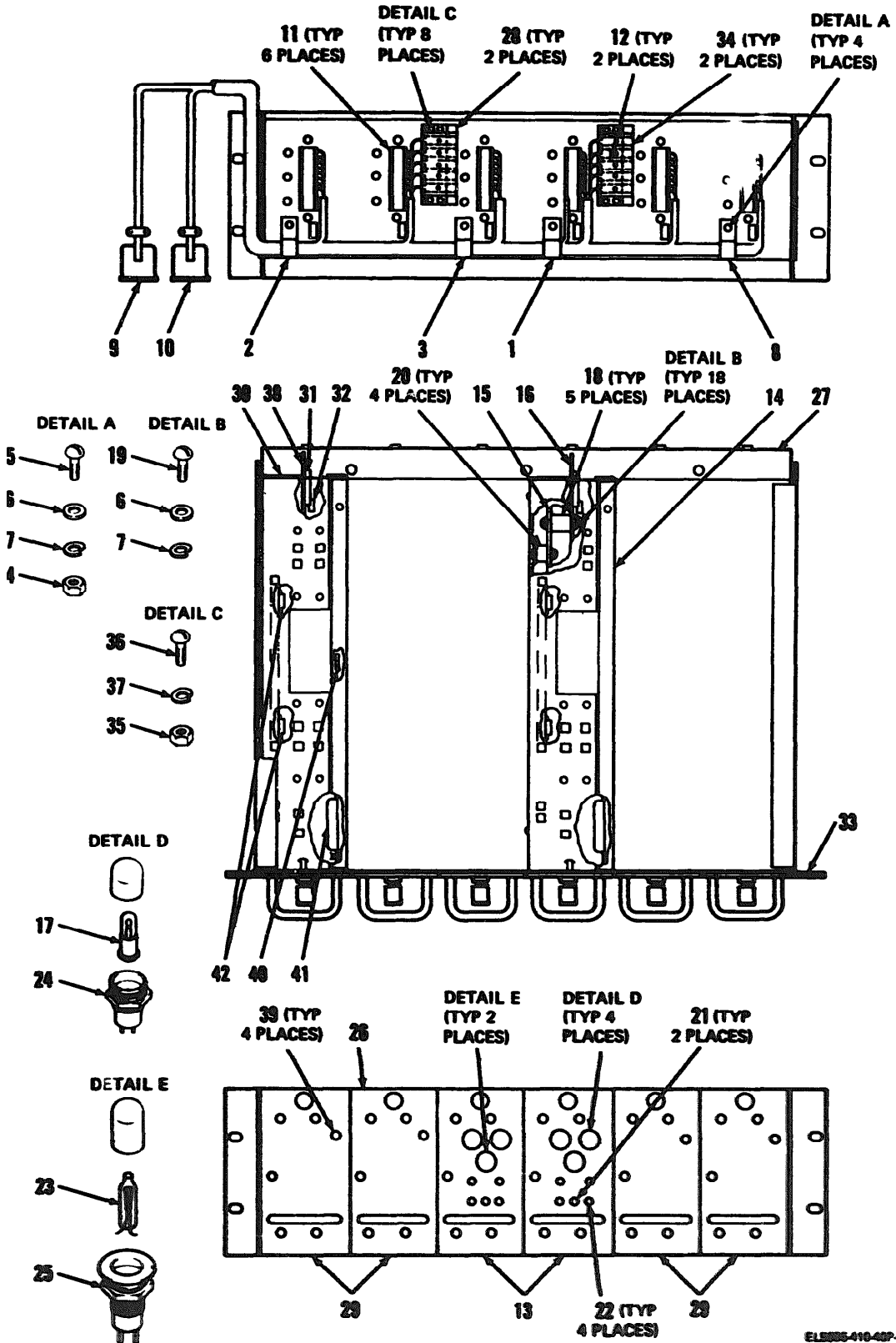
SECTION II. REPAIR PARTS LIST (Continued)

(1) SNR CODE	(2) FEDERAL STOCK NUMBER	(3) DESCRIPTION REFERENCE NUMBER & MFR CODE	(4) UNIT OF MEAS USABLE ON CODE	(5) QTY INC IN UNIT	(6) 30-DAY DS MAINT ALLOWANCE			(7) 30-DAY GS MAINT ALLOWANCE			(8) 1 YR ALW PERIOD EQUIP CRITCY	(9) DEPOT MAINT ALW PER 100 EQUIP	(10) ILLUSTRATIONS		
					(a)	(b)	(c)	(d)	(e)	(f)			(g)	(h)	(i)
					1-20	21 50	51-100	1 20	21 50	51 100			FIG NO	(b) ITEM NO	
P-H-S	5895-936-5514	FILTER UNIT F-1176/FYA-22 100001409-310 (46859)	EA	V											
P-H-S	5915-878-5003	FILTER UNIT F 1200/FYA-201 100001409-201 (46859)	EA	V											
P-H	5915-83	FILTER UNIT F-1180/FYQ F1992 (02777)	EA	V											



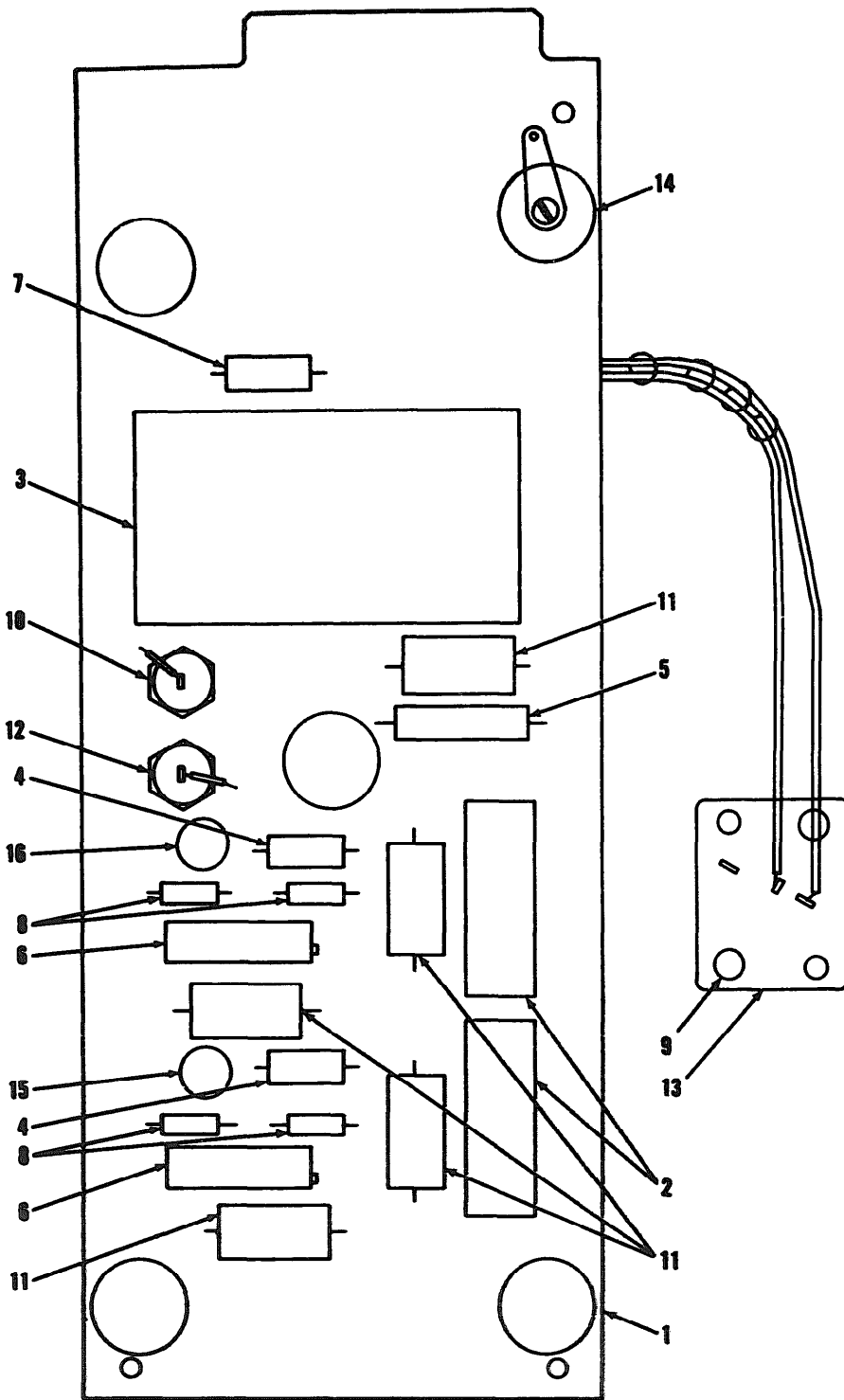
EL5895-410-40P-TM-1

Figure 1. Signal level converter Facility Assemblies.



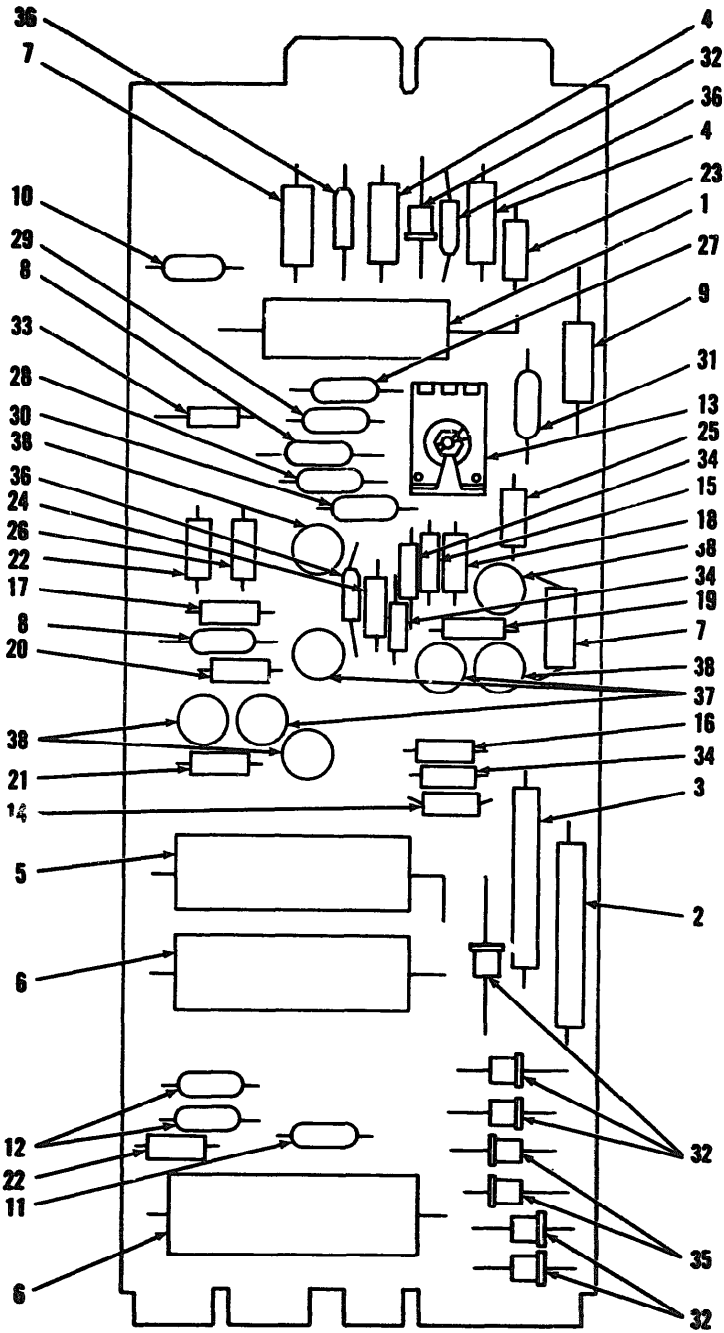
EL5895-410-40P-T102

Figure 2. Power Supply 368-41455-2.



EL5895-410-40P-TM-3

Figure 3. Module Assembly 368-41456-2.



E15895-410-40P TM-4

Figure 4. Power Supply PBX15-15C7551.

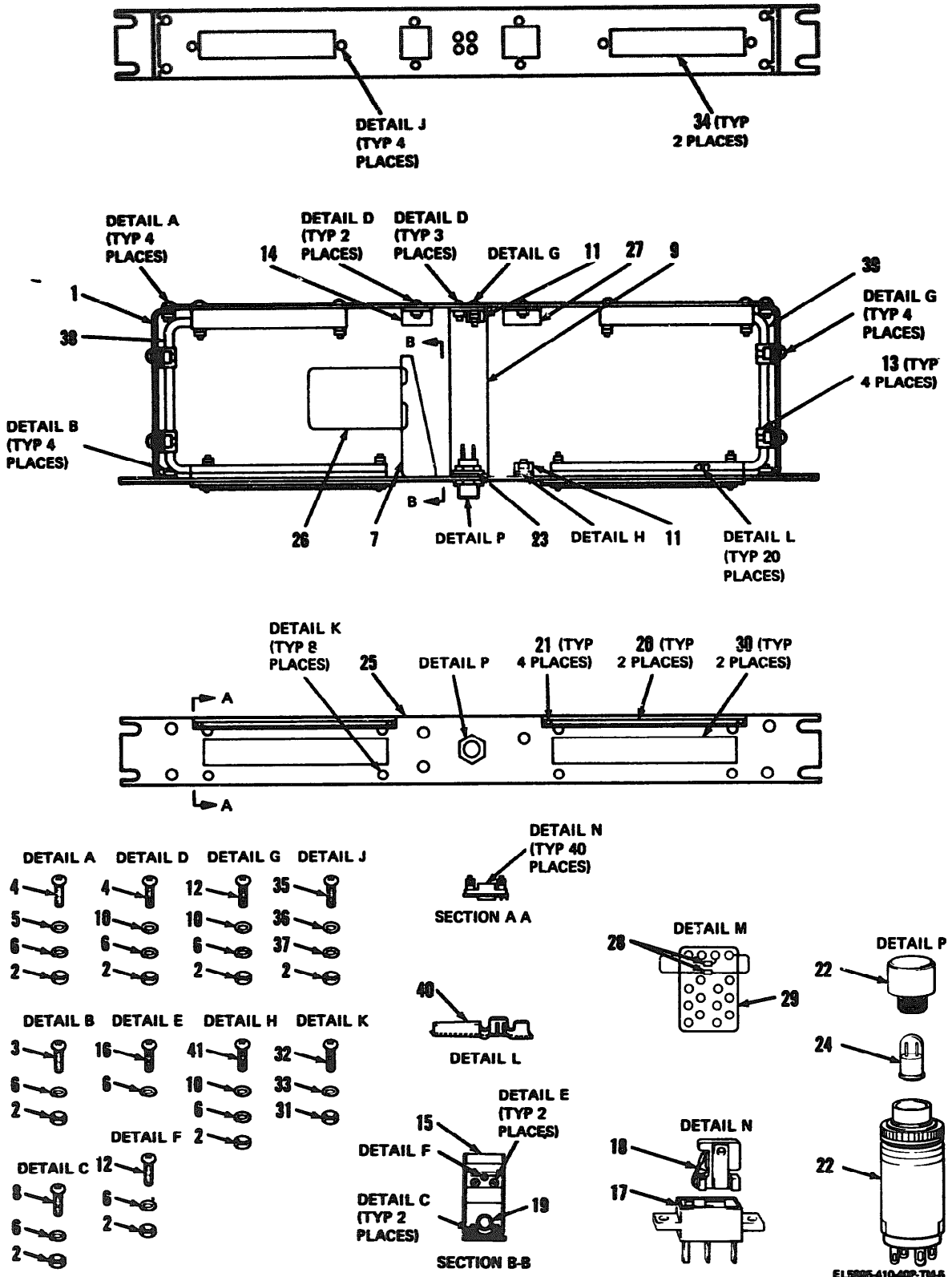


Figure 5. Fuse Panel 368-41453.

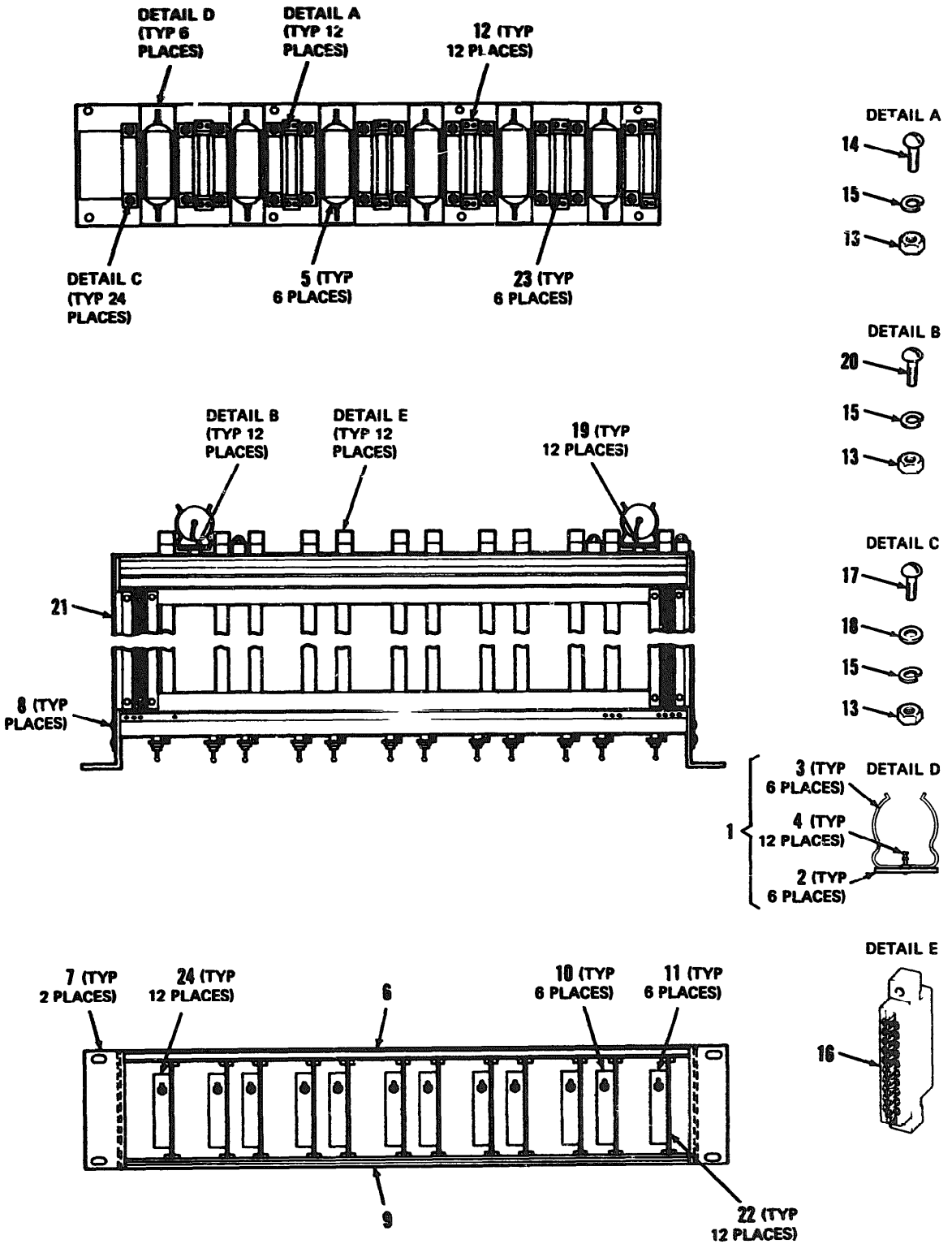


Figure 6. Card Shelf 368-41452-1.

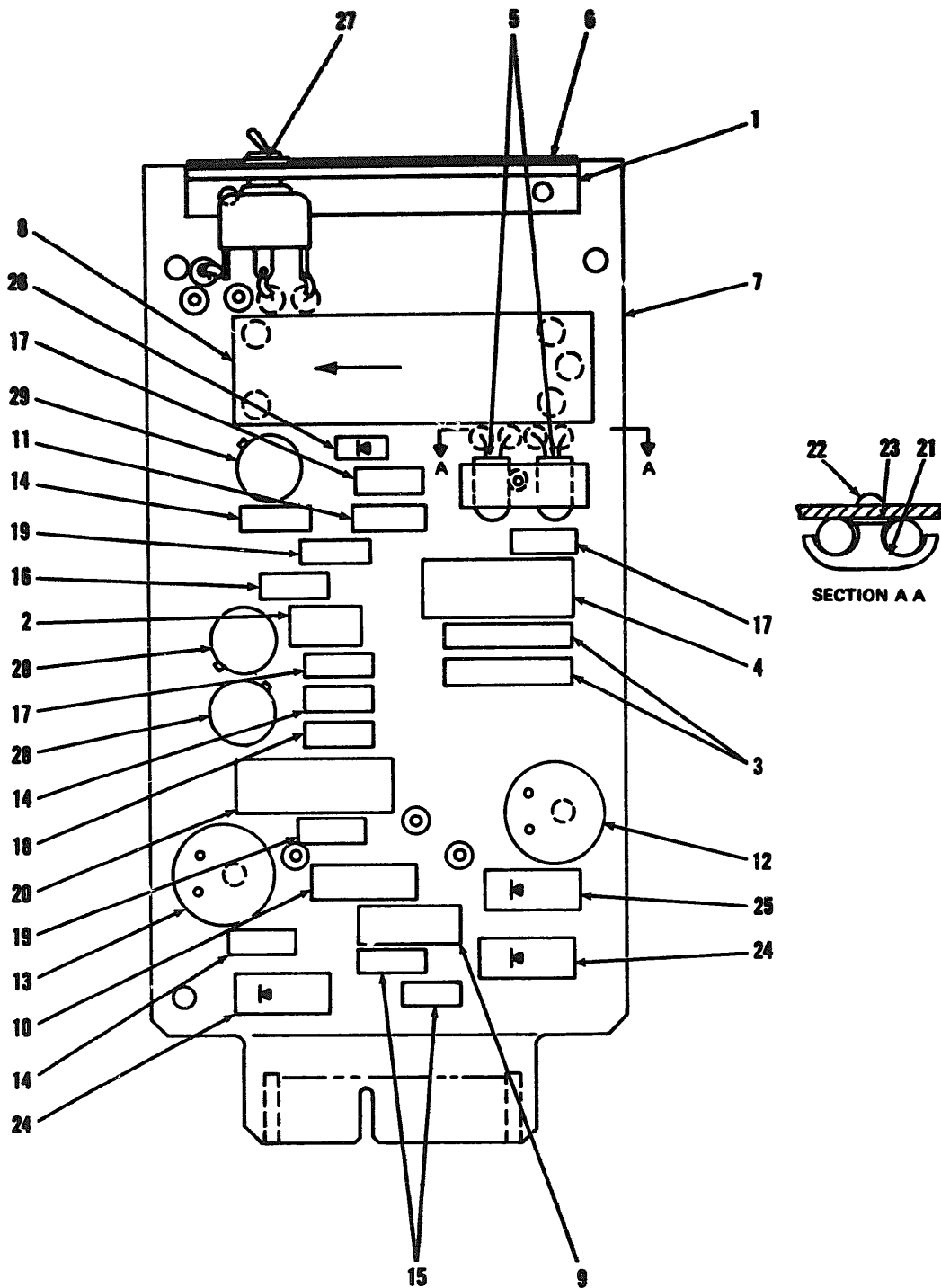
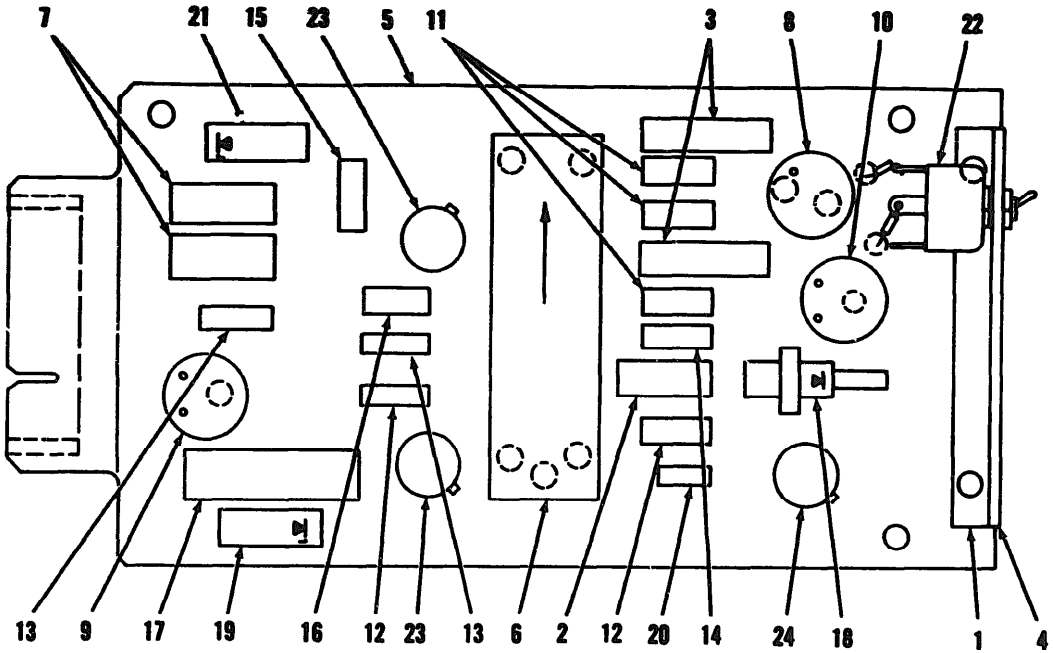


Figure 7. Circuit Card Assembly 368-42537.

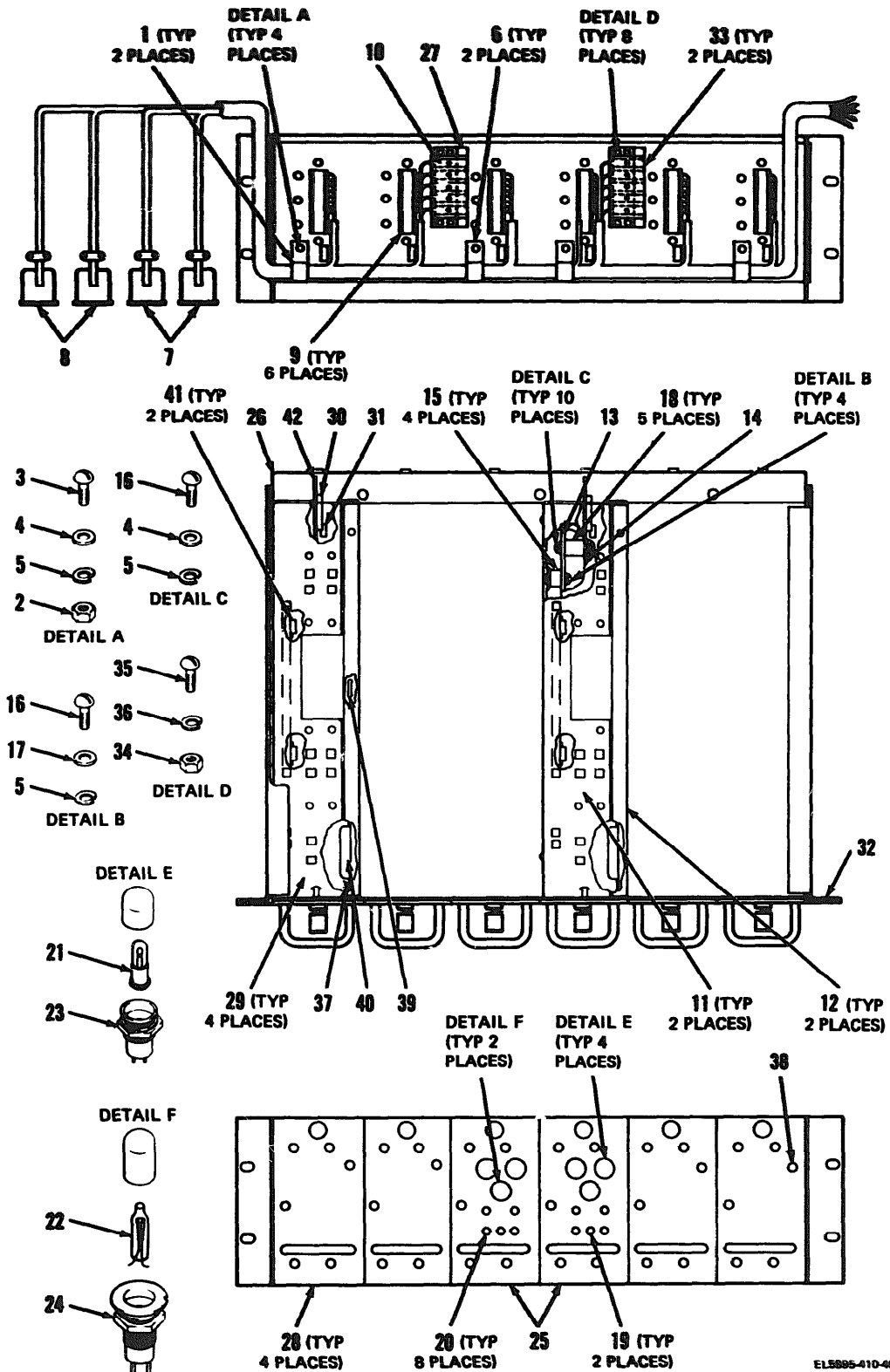


EL5895-410-40P-TM-8

Figure 8. Circuit Card Assembly, 368-41687-1.

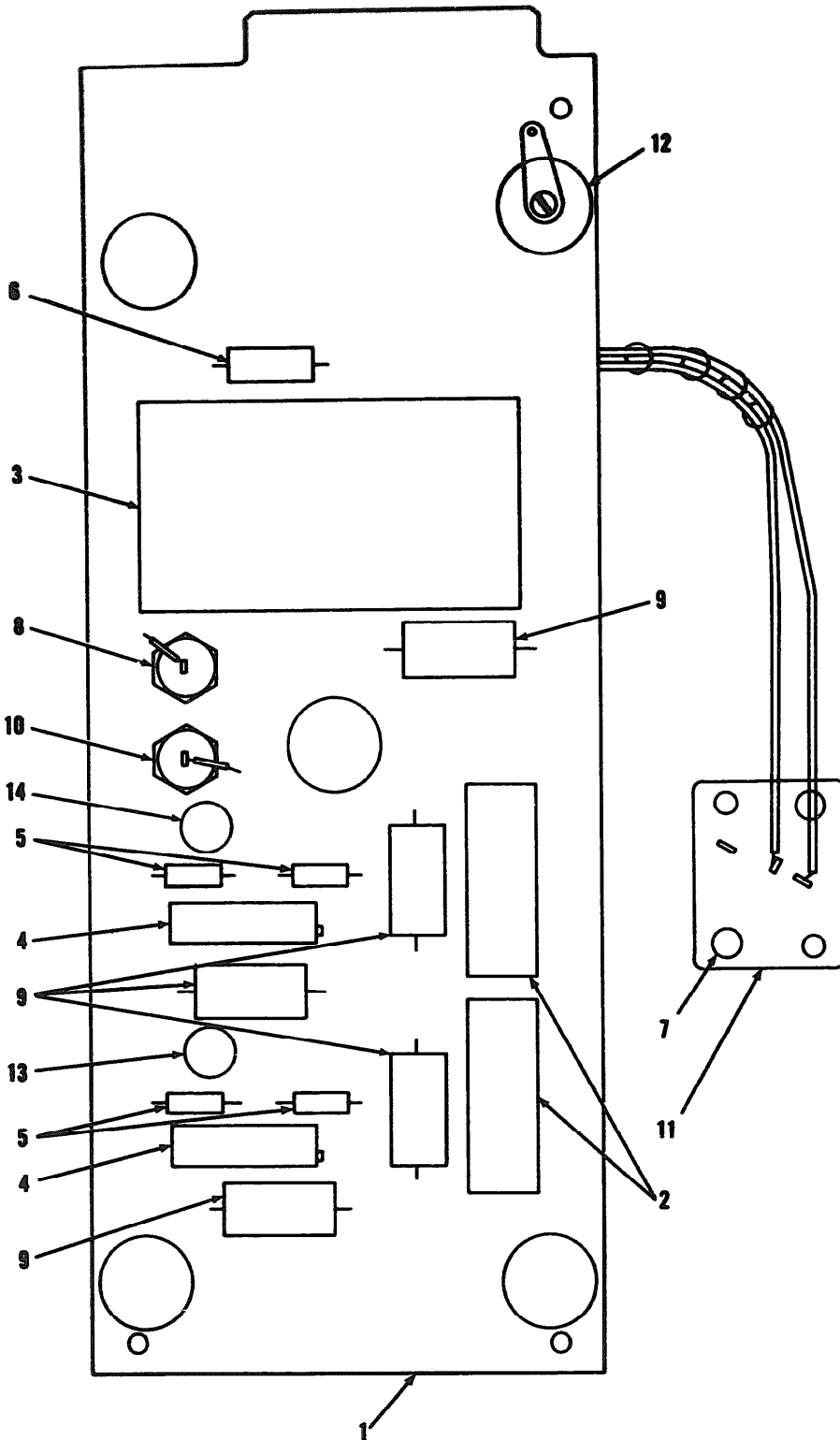
Figure 9. Red/Black Isolation Unit 368-42333-1

(Located in back of manual).



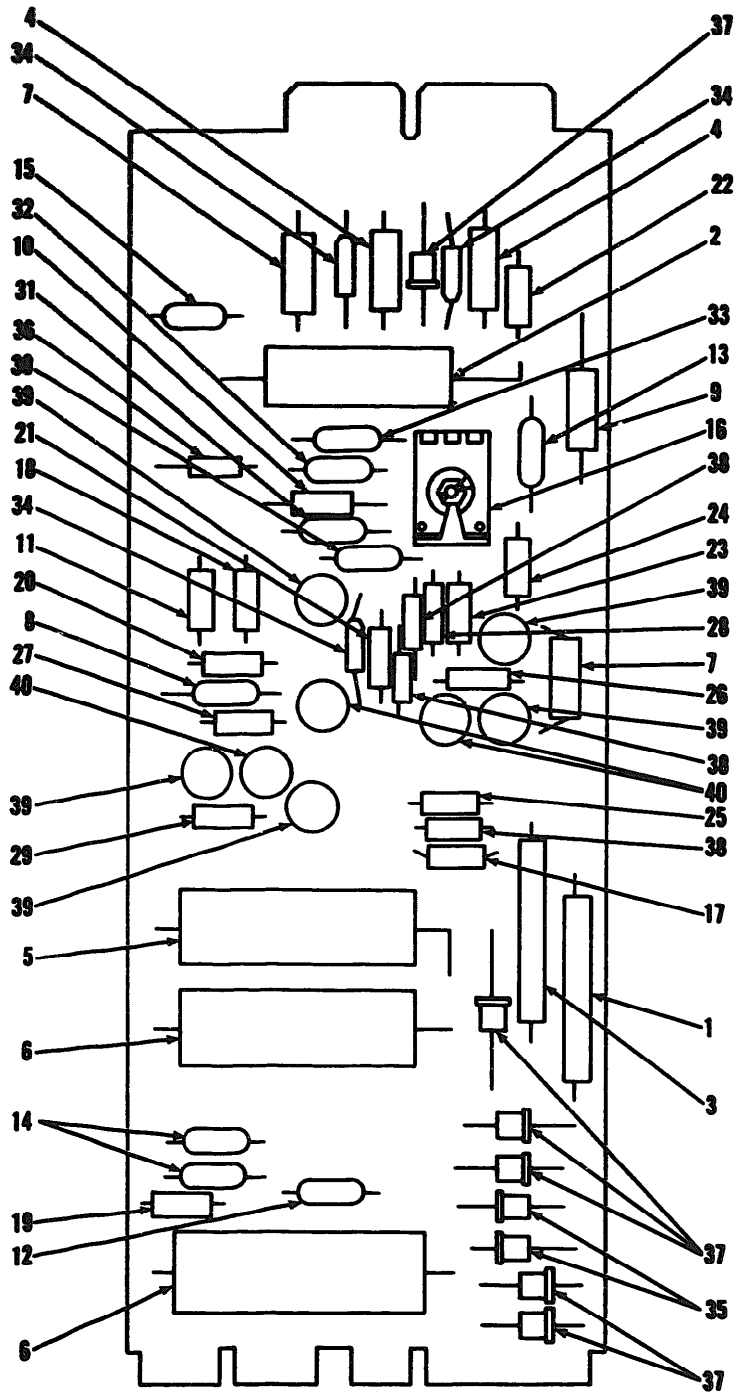
EL5895-410-40P-TM-10

Figure 10. Power Supply Assembly PP-4830/G
368-41455-1.



EL5895-410-40P TM-11

Figure 11. Module Assembly 368-41456-1.



EL5895-410-40P-TM-12

Figure 12. Power Supply PBX7-2C7523.

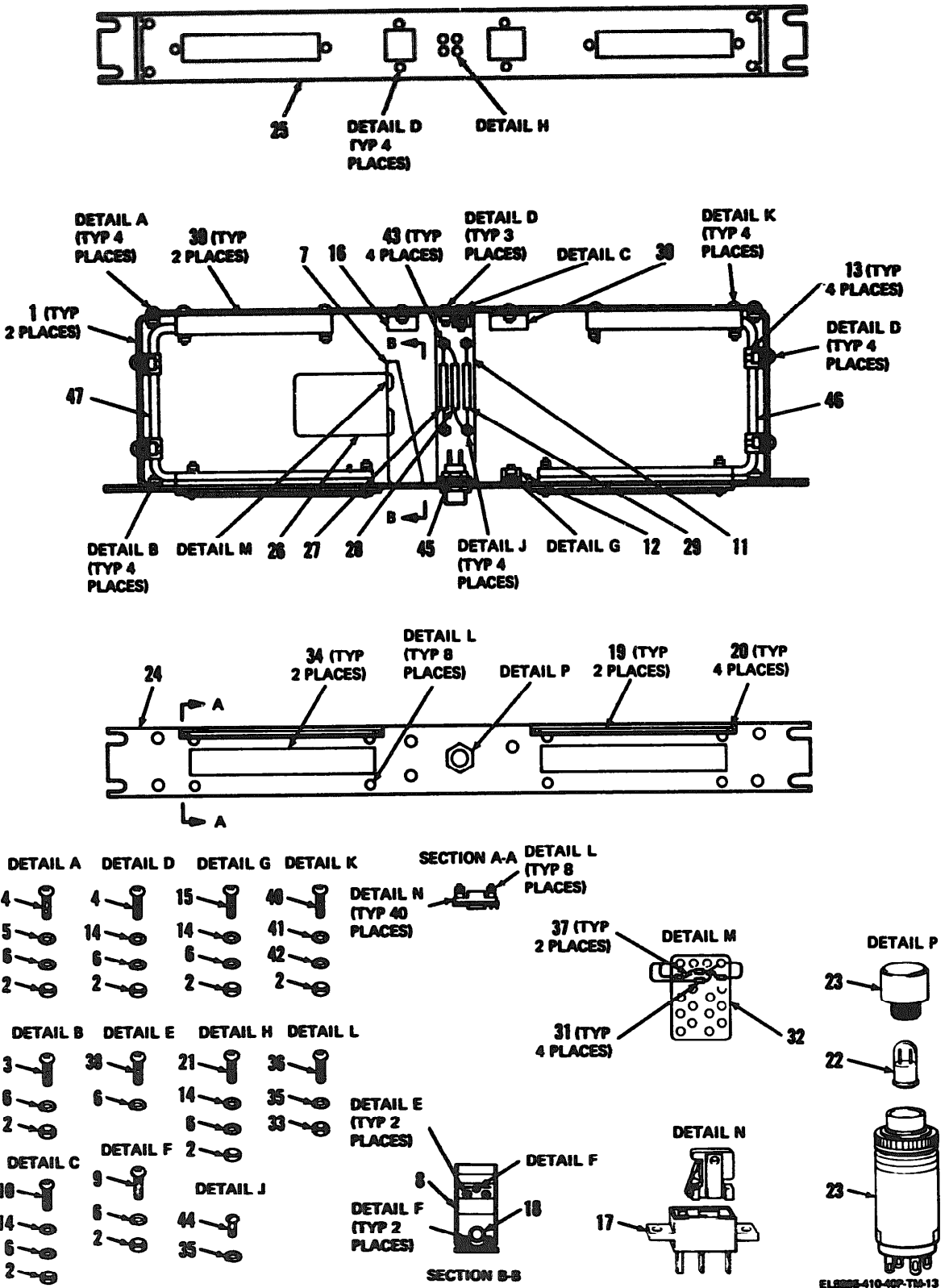
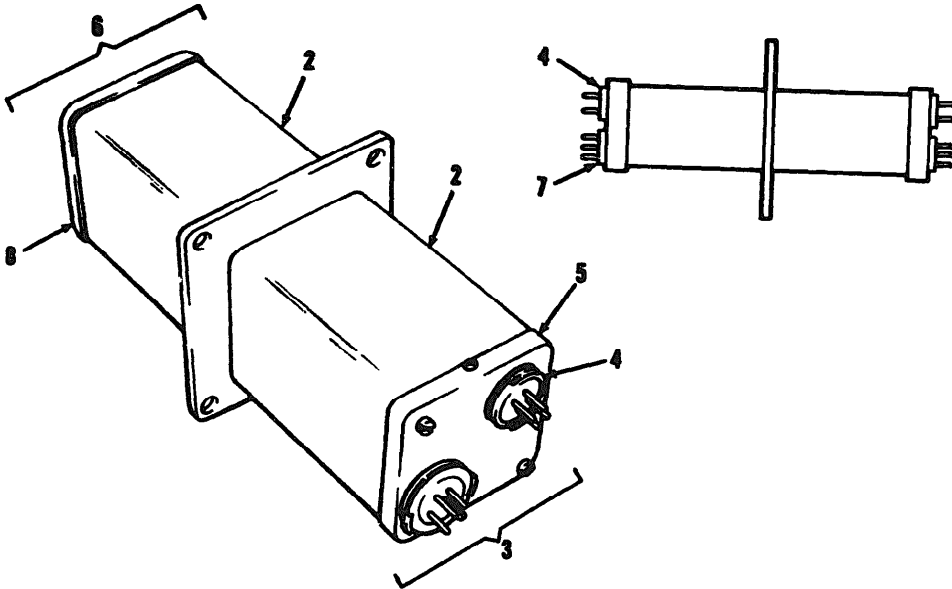
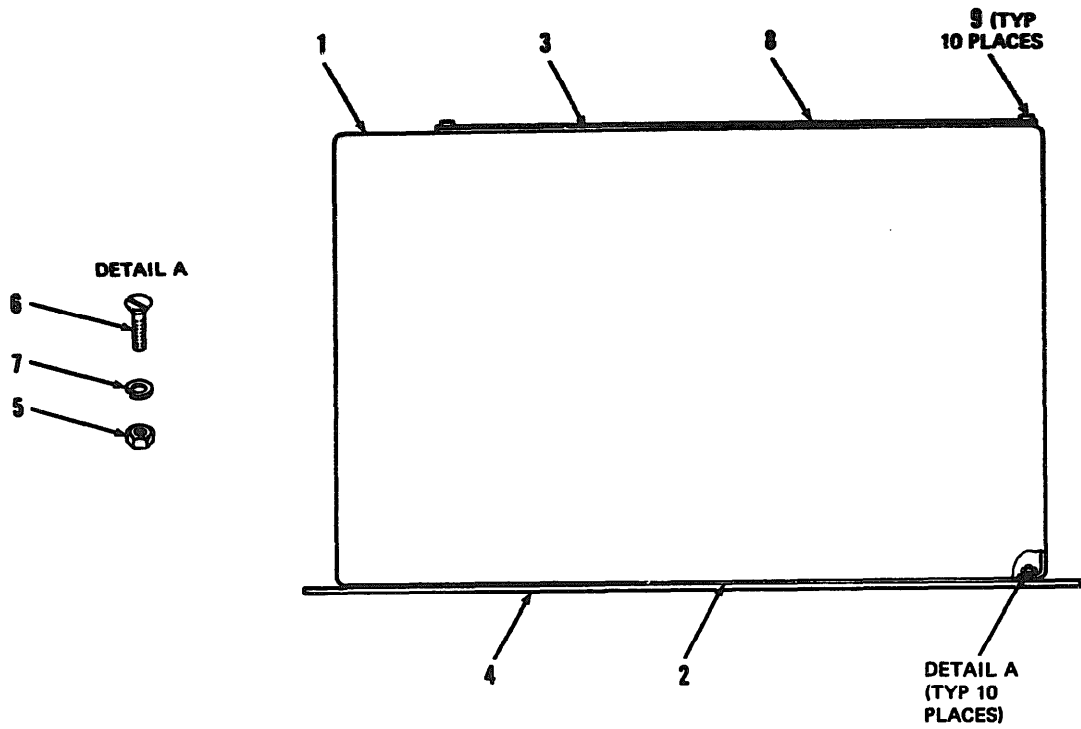


Figure 13. Fuse Panel 368-41523.



EL5895-410-40P-TM-14

Figure 14. Isolation Switch P651.



EL5895-410-40P-TM-15

Figure 15. Electrical Equipment Case, 398-7572-2.

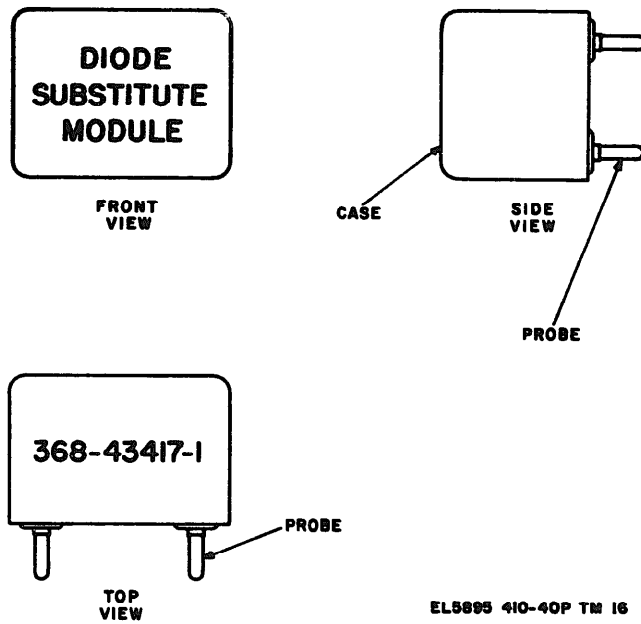


Figure 16. Diode Substitute Module 368-43417.

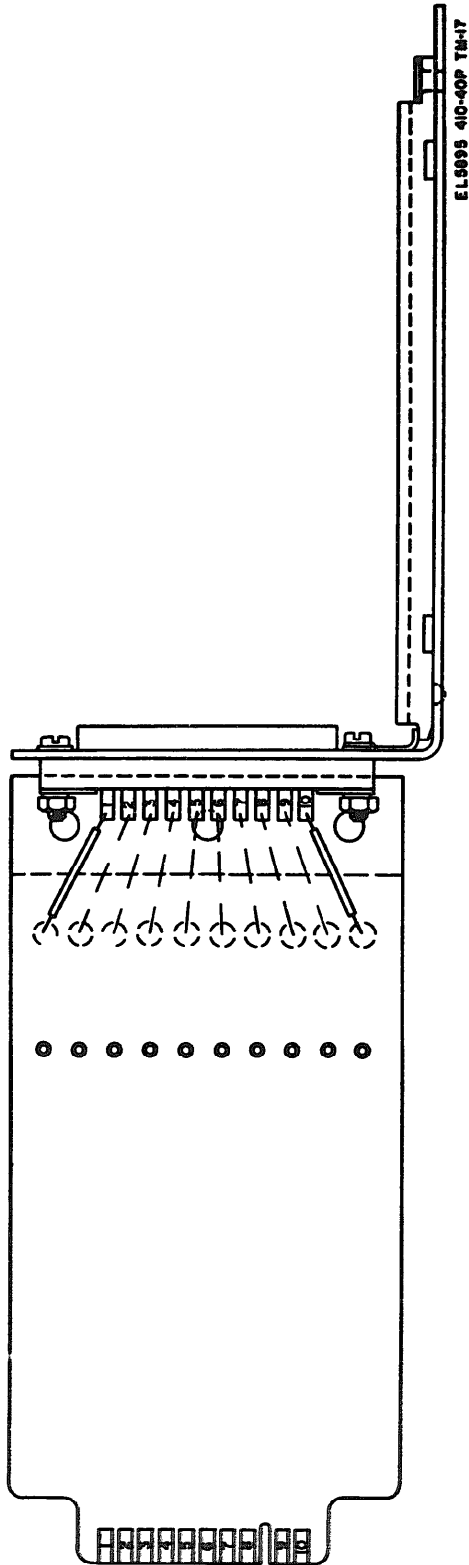
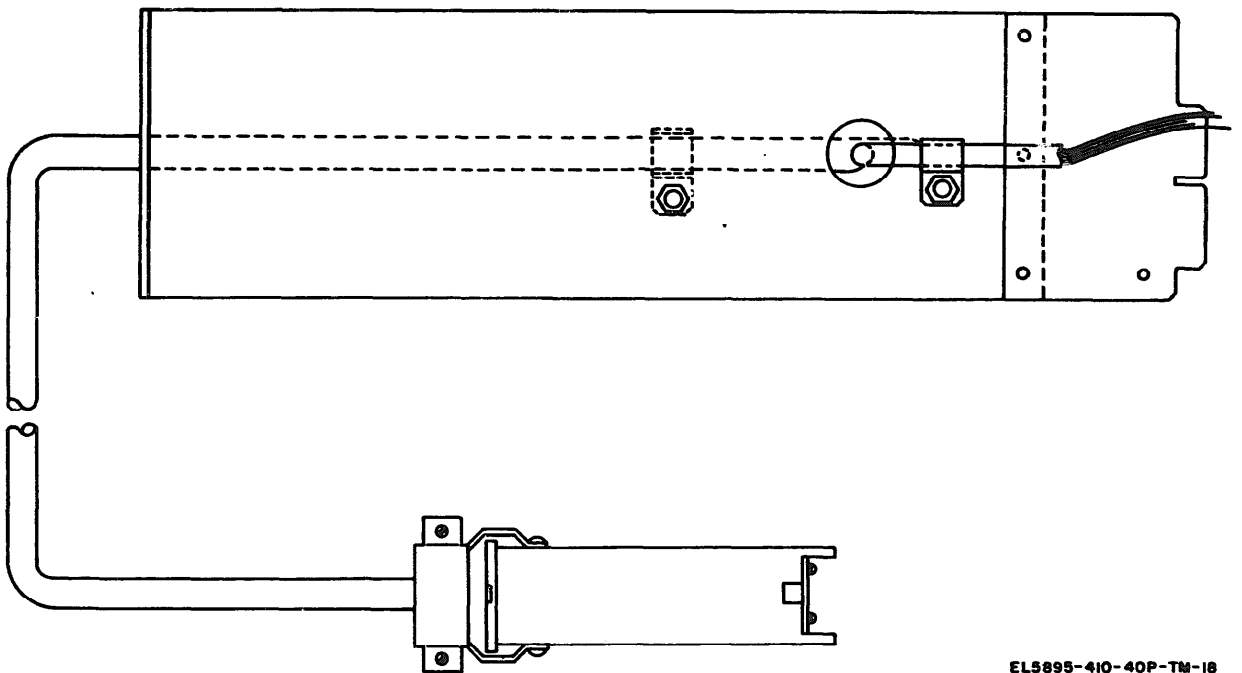


Figure 17. Extender Card Assembly DC/DC Converter.



EL5895-410-40P-TM-18

Figure 18. Power Supply Extender, 368-43259.

SECTION III. SPECIAL TOOLS LIST

(1) S&R CODE	(2) FEDERAL STOCK NUMBER	(3) DESCRIPTION REFERENCE NUMBER & MFR. CODE	(4) UNIT OF MEAS	(5) QTY INC IN UNIT	(6) 30-DAY DS MAINT ALLOWANCE			(7) 30-DAY GS MAINT ALLOWANCE			(8) 1 YR ALMPER 100 EQUIP CATEGORY	(9) DEPOT MAINT PER 100 EQUIP	(10) ILLUSTRATIONS	
					(a) 1-20	(b) 21-50	(c) 51-100	(a) 1-20	(b) 21-50	(c) 51-100			(a) FIG NO.	(b) ITEM NO. OR REFERENCE DESIGNATION
F-H		DIODE ASSEMBLY: 368-43417; (46859)	EA	1				*	*	*	*	*	16	
F-H		EXTENDER CARD, DC/DC CONVERTER: 398-8981; (46859)	EA	2				*	*	*	*	*	17	
F-H		EXTENDER CARD, POWER SUPPLY	EA	1				*	*	*	*	*	18	

NOTE: LATEST FEDERAL STOCK NUMBER ASSIGNMENTS ARE INCLUDED AT END OF INDEX
 SECTION IV. FEDERAL STOCK NUMBER AND REFERENCE NUMBER INDEX

FEDERAL STOCK NUMBER	FIGURE NUMBER	ITEM NUMBER	FEDERAL STOCK NUMBER	FIGURE NUMBER	ITEM NUMBER	FEDERAL STOCK NUMBER	FIGURE NUMBER	ITEM NUMBER
5305-054-5637	13	15	5305-727-8831	5	32			
5305-054-5646	13	44	5305-727-8832	13	9			
5305-054-6652	13	4	5305-727-8832	5	8	5310-275-9310	10	2
5305-054-6652	5	4	5305-763-6963	13	3	5310-582-5965	9	12
5305-054-6654	13	10	5305-763-6963	5	3	5310-595-6211	6	18
5305-054-6654	5	12	5305-764-2966	13	20	5310-595-6772	9	35
5305-054-6656	13	38	5305-764-2966	5	21	5310-722-5998	13	14
5305-054-6656	5	16	5305-984-6193	15	9	5310-722-5998	5	10
5305-054-6656	9	55				5310-722-5998	9	56
5305-054-6666	2	26				5310-809-3078	9	11
5305-054-6667	10	16				5310-880-5976	13	5
5305-054-6667	2	19				5310-880-5976	5	5
5305-054-6668	9	21				5310-5978	10	4
5305-054-6674	13	40				5310-880-5978	13	41
5305-054-6674	5	35	5310-042-9609	13	35	5310-880-5978	2	6
5305-054-6677	9	59	5310-042-9609	5	33	5310-880-5978	5	36
5305-054-6681	9	60	5310-042-9609	6	15	5310-899-9145	7	23
5305-054-9226	9	62				5320-117-6951	6	8
5305-059-3657	9	6				5325-202-2515	13	18
5305-059-3663	9	4				5325-202-2515	5	19
5305-063-3503	15	6				5340-016-6077	6	3
5305-071-1318	9	10				5805-167-7878	10	14
						5805-806-1856	11	11
			5310-209-5309	15	7	5805-806-1856	3	13
						5895-116-5404	6	11
5305-579-3511	10	3				5895-116-5405	6	10
5305-579-3511	2	5				5895-116-5406	2	16
						5895-832-8083	9	47
5305-719-5064	13	21						
5305-719-5064	5	41				5905-012-3477	13	5
5305-727-8831	13	36				5905-061-0022	10	39

SECTION IV. FEDERAL STOCK NUMBER AND REFERENCE NUMBER INDEX (Continued)

FEDERAL STOCK NUMBER	NUMBER	ITEM NUMBER	FEDERAL STOCK NUMBER	NUMBER	ITEM NUMBER	FEDERAL STOCK NUMBER	NUMBER	ITEM NUMBER
5905-070-3369	13	29	5905-279-1877	12	25	5905-984-3312	13	27
			5905-279-1877	4	16	5905-985-6440	12	33
			5905-279-18997	12	11	5905-985-6440	4	27
			5905-279-2019	10	31	5905-993-4958	8	9
5905-171-1999	3	8	5905-279-2593	12	17	5905-993-4959	7	13
5905-171-2006	11	5	5905-279-2593	4	14	5905-993-4959	8	8
5905-185-8510	12	23	5905-279-2654	11	6	5905-993-5984	7	20
5905-185-8510	4	18	5905-279-2654	3	7	5905-993-5984	8	17
5905-185-8510	7	14	5905-279-2669	2	32	5905-994-0468	12	30
5905-185-8510	8	11	5905-279-2673	12	27	5905-994-0468	4	30
5905-190-8883	12	22	5905-279-2673	4	20	5910-013-9427	4	6
5905-190-8883	4	23	5905-279-3504	7	15	5910-021-2684	6	5
5905-190-8889	12	19	5905-279-3504	8	15	5910-439-0294	12	10
5905-190-8889	4	26	5905-299-1965	12	21	5910-824-0839	12	5
5905-192-3973	12	28	5905-299-1965	4	24	5910-824-0841	12	2
5905-192-3973	4	15	5905-319-0753	8	7	5910-832-8492	12	4
5905-192-3973	7	17	5905-400-4459	7	10	5910-832-8492	4	4
5905-192-3973	8	12	5905-725-8780	3	4	5910-835-2738	7	4
5905-195-6453	7	18	5905-764-3239	10	30	5910-836-8900	7	3
5905-195-6453	8	13	5905-764-3239	2	31	5910-836-8900	8	3
5905-195-6800	12	20	5905-782-4066	12	31	5910-841-7971	12	9
5905-195-6800	4	17	5905-782-4066	4	28	5910-841-7971	4	9
5905-195-6806	12	24	5905-848-4784	12	16			
5905-195-6806	4	25	5905-848-4784	4	13	5910-879-4544	12	6
5905-228-6430	6	12	5905-865-0361	12	15	5910-904-6431	12	1
5905-244-7397	7	9				5910-904-6431	4	2
5905-252-4018	12	18	5905-913-4338	4	12			
5905-252-5434	4	22	5905-926-8554	4	10			
5905-279-1751	12	26	5905-928-1423	12	32	5910-928-7816	4	8
5905-279-1751	4	19	5905-928-1423	4	29	5910-929-1822	4	1
5905-279-1761	7	19				5910-929-1827	4	5
5905-279-1761	8	16	5905-937-5893	7	11	5910-985-0101	12	3
5905-279-1870	7	16	5905-958-7253	13	28	5910-985-0101	4	3
5905-279-1870	8	14	5905-962-0537	11	4			
5905-279-1880	12	29	5905-962-0537	3	6	5920-199-9498	10	37
5905-279-1880	4	21	5905-974-6037	4	11			

SECTION IV. FEDERAL STOCK NUMBER AND REFERENCE NUMBER INDEX (Continued)

FEDERAL STOCK NUMBER	FIGURE NUMBER	ITEM NUMBER	FEDERAL STOCK NUMBER	FIGURE NUMBER	ITEM NUMBER	FEDERAL STOCK NUMBER	FIGURE NUMBER	ITEM NUMBER
5920-832-8216	9	44	5940-620-8424	3	14	5961-842-6181	7	24
5920-857-8909	5	18	5940-621-2195	5	40	5961-842-6181	8	19
5920-857-8909	9	36	5940-621-2195	9	65	5961-844-6720	11	7
5920-968-3238	13	17	5940-763-0923	13	39	5961-848-7007	7	26
5920-968-3238	5	17	5940-763-7672	13	37	5961-848-7007	8	20
			5940-983-6046	10	33	5961-851-5923	11	14
5930-845-5840	6	24	5940-983-6046	2	34	5961-851-5923	3	16
5930-845-5840	7	27	5945-064-3458	13	26	5961-851-5923	7	29
5930-845-5858	8	22				5961-851-5923	8	23
5930-995-2400	13	23				5961-866-5454	12	36
5930-995-2400	5	22	5945-772-6409	5	26	5961-866-5454	4	33
						5961-917-3478	10	41
						5961-917-3478	2	42
			5945-913-4386	7	8	5961-926-0209	7	25
			5945-913-4386	8	6	5961-926-0209	8	21
5935-187-0723	10	8	5950-824-0842	10	40	5961-832-7031	12	37
5935-187-0723	2	9				5961-932-7031	4	32
5935-257-7196	13	30	5961-087-7949	11	10	5961-936-8405	12	35
5935-257-7196	5	27	5961-087-7949	3	12	5961-936-8405	4	35
5935-258-1924	9	15	5961-577-6214	11	9	5970-065-8615	13	43
5935-259-3604	14	4	5961-577-6214	13	31	5975-105-0593	9	23
5935-259-3988	14	7	5961-577-6214	3	11	5975-280-7921	9	22
5935-665-7965	13	16	5961-577-6214	5	28	5975-280-9224	9	30
5935-665-7965	5	14	5961-577-6214	8	18	5975-642-7261	9	42
						5975-893-8544	9	29
5935-832-6774	6	16				6130-898-1479	12	34
5935-937-6284	10	20	5961-685-8967	11	8	6130-898-1479	4	36
5935-937-6284	2	22	5961-685-8967	3	10	6210-806-9421	10	23
			5961-764-2572	12	40	6210-806-9421	2	24
			5961-764-2572	4	37			
			5961-810-3985	3	9	6240-034-5908	2	39
			5961-829-0194	11	13	6240-703-6614	10	38
5940-159-0229	6	4	5961-829-0194	3	15	6240-851-4352	2	17
			5961-829-0194	7	28	6240-892-4420	10	22
			5961-829-0194	8	24	6240-4420	2	23
5940-577-3711	9	64	5961-838-1141	12	39			
5940-620-8424	11	12	5961-838-1141	4	38			

SECTION IV. FEDERAL STOCK NUMBER AND REFERENCE NUMBER INDEX (Continued)

FEDERAL STOCK NUMBER	FIGURE NUMBER	ITEM NUMBER	FEDERAL STOCK NUMBER	FIGURE NUMBER	ITEM NUMBER	FEDERAL STOCK NUMBER	FIGURE NUMBER	ITEM NUMBER	
6240-923-0758	7	5							
6250-060-8095	7	21							
7440-033-9610	14	2							
7440-935-6178	15	3							
7440-935-6179	15	2							
	<u>REF. NO.</u>	<u>MFG. CO.</u>	<u>FIG. NO.</u>	<u>ITEM NO.</u>					
AD	91967	13	37						
A130493	71482	11	2						
A130493	71482	3	2						
A8516	71482	5	26						
CA1	85604	10	12						
CA1	85604	2	14						
CESTO-1002F	35009	12	33						
CESTO-1002F	35009	4	27						
CESTO-2432F	35009	12	30						
CESTO-2432F	35009	4	30						
CESTO-6811F	35009	12	31						
CESTO-6811F	35009	4	28						
CESTO-7500F	35009	12	32						
CESTO-7500F	35009	4	29						
CM05D301J03	81349	7	2						
CM05D301J03	81349	8	2						
CM1730	71744	7	5						
CR4T1006	71482	11	3						
CR4T1006	71482	3	3						
CTM102VDJ	81349	7	3						
CTM102VDJ	81349	8	3						
CTM154VAJ	81349	7	4						
DE1775FA5	87216	14	1						
DE1775FA6	87216	14	3						
DE1775FA7	87216	14	6						
DE1775FA8	87216	14	2						
DE1775FI02	87216	14	5						
DE1775FI03	87216	14	8						
EL295	15235	9	30						
GMT3-4	71400	5	18						
				<u>MFG. CO.</u>	<u>FIG. NO.</u>	<u>ITEM NO.</u>			
GMT3-4				71400	9	36			
HG8M5010				71482	7	8			
HG8M5010				71482	8	6			
HLT				71400	13	17			
HLT				71400	5	17			
JDP64C24				71482	13	26			
L060637-4735-8558				91833	7	11			
MDL5-10				71400	10	37			
MK15				04713	11	11			
MK15				04713	3	13			
MS15-140				71785	9	45			
MS15795-42				96906	10	17			
MS15795-803				96906	6	18			
MS15795-805				96906	13	14			
MS15795-805				96906	5	10			
MS15795-805				96906	9	56			
MS15795-806				96906	13	5			
MS15795-806				96906	5	5			
MS15795-807				96906	10	4			
MS15795-807				96906	13	41			
MS15795-807				96906	2	6			
MS15795-807				96906	5	36			
MS15795-808				96906	9	35			
MS20426AD4-6				96906	6	8			
MS21266-2				96906	9	38			
MS24693S50				96906	15	6			
MS25256-4				96906	10	23			
MS25256-4				96906	2	24			
MS25257-6				96906	10	24			
MS25257-6				96906	2	25			
MS25281-2				96906	2	1			
MS25281-3				96906	13	12			
MS25281-3				96906	5	11			
MS25281-4				96906	13	13			
MS25281-4				96906	5	13			
MS25281-5				96906	2	2			
MS27183-11				96906	9	11			
							<u>MFG. CO.</u>	<u>FIG. NO.</u>	<u>ITEM NO.</u>
MS8137-17				96906	6	3			
MS35206-245				96906	15	9			
MS35216-28				96906	10	35			
MS35216-28				96906	2	36			
MS35216-42				96906	10	3			
MS35216-42				96906	2	5			
MS35233-15				96906	6	14			
MS35233-18				96906	6	17			
MS35233-19				96906	6	20			
MS35338-23				96906	15	7			
MS35338-44				96906	9	12			
MS35338-78				96906	13	35			
MS35338-78				96906	5	33			
MS35338-78				96906	6	15			
MS35338-79				96906	10	36			
MS35338-79				96906	13	6			
MS35338-79				96906	2	37			
MS35338-79				96906	5	6			
MS35338-79				96906	9	57			
MS35338-80				96906	10	5			
MS35338-80				96906	13	42			
MS35338-80				96906	2	7			
MS35338-80				96906	5	37			
MS35338-80				96906	9	33			
MS35338-81				96906	9	5			
MS35431-4				96906	11	12			
MS35431-4				96906	3	14			
MS35649-44				96906	13	33			
MS35649-44				96906	5	31			
MS35649-44				96906	6	13			
MS35649-64				96906	13	2			
MS35649-64				96906	2	35			
MS35649-64				96906	5	2			
MS35649-64				96906	9	54			
MS35649-82				96906	15	5			
MS35649-84				96906	2	4			
MS35649-84				96906	9	32			

SECTION IV. FEDERAL STOCK NUMBER AND REFERENCE NUMBER INDEX (Continued)

FEDERAL STOCK NUMBER				FEDERAL STOCK NUMBER				FEDERAL STOCK NUMBER			
FIGURE NUMBER		ITEM NUMBER		FIGURE NUMBER		ITEM NUMBER		FIGURE NUMBER		ITEM NUMBER	
REF. NO.	MPG. CO.	FIG. NO.	ITEM NO.	REF. NO.	MPG. CO.	FIG. NO.	ITEM NO.	REF. NO.	MPG. CO.	FIG. NO.	ITEM NO.
MS35650-104	96906	9	3	MM10-202J	83777	2	40	RC20GF242J	81349	4	16
MS35650-64	96906	10	34	M4FLRE	81312	14	4	RC20GF271J	81349	11	5
MS35650-63	96906	10	2	M4SLSH10C	81312	9	16	RC20GF272J	81349	12	29
MS5-140	71785	10	27	N5FLRE	81312	14	7	RC20GF272J	81349	4	21
MS5-140	71785	2	28	N5SLSH19C	81312	9	15	RC20GF301J	81349	12	21
MS51957-12	96906	13	44	HE2D	80204	10	22	RC20GF301J	81349	4	24
MS51957-28	96906	13	4	HE2D	71744	2	23	RC20GF302J	81349	12	26
MS51957-28	96906	5	4	PBX15-15C7551	85604	2	30	RC20GF302J	81349	4	19
MS51957-3	96906	13	15	BPX7-2C7523	85604	10	29	RC20GF470J	81349	12	18
MS51957-30	96906	13	10	PKN6P47	14655	6	5	RC20GF471J	81349	12	28
MS51957-30	96906	5	12	P304AB	71785	13	16	RC20GF471J	81349	4	15
MS51957-32	96906	13	38	P304AB	71785	5	14	RC20GF471J	81349	7	17
MS51957-32	96906	5	16	P306AB	71785	13	30	RC20GF471J	81349	8	12
MS51957-32	96906	9	55	P306AB	71785	5	27	RC20GF472J	81349	7	15
MS51957-42	96906	10	16	P40061420	96195	9	9	RC20GF472J	81349	8	15
MS51957-42	96906	2	19	P651	87216	14		RC20GF512J	81349	10	31
MS51957-43	96906	9	21	RA6-6	85604	10	32	RC20GF560J	81349	12	11
MS51957-49	96906	13	40	RA6-6	85604	2	33	RC20GF561J	81349	12	20
MS51957-49	96906	5	35	RA6-6BP	85604	10	26	RC20GF561J	81349	4	17
MS51957-52	96906	9	59	RA6-6BP	85604	2	27	RC20GF562J	81349	7	18
MS51957-54	96906	9	60	RC20GF100J	81349	12	22	RC20GF562J	81349	8	13
MS51957-57	96906	9	62	RC20GF100J	81349	4	23	RC20GF621J	81349	7	19
MS51957-83	96906	9	10	RC20GF101J	81349	12	19	RC20GF621J	81349	8	16
MS51958-61	96906	9	6	RC20GF101J	81349	4	26	RC20GF622J	81349	12	27
MS51958-67	96906	9	4	RC20GF102J	81349	12	24	RC20GF622J	81349	4	20
MS51959-19	96906	13	36	RC20GF102J	81349	4	25	RC20GF821J	81349	3	8
MS51959-19	96906	5	32	RC20GF103J	81349	12	23	RC32GF820J	81349	11	6
MS51959-2	96906	13	20	RC20GF103J	81349	4	18	RC32GF820J	81349	3	7
MS51959-2	96906	5	21	RC20GF103J	81349	7	14	RE70D5621F	81349	7	20
MS51959-28	96906	13	3	RC20GF103J	81349	8	11	RE70D5621F	81349	8	17
MS51959-28	96906	5	3	RC20GF121J	81349	4	22	RP14261G1	71482	13	8
MS51959-29	96906	13	9	RC20GF132J	81349	7	16	RP14261G1	71482	5	15
MS51959-29	96906	5	8	RC20GF132J	81349	8	14	RP14391G3	71482	13	32
MS51959-30	96906	13	21	RC20GF133J	81349	2	32	RP14391G3	71482	5	29
MS51959-30	96906	5	41	RC20GF241J	81349	12	17	RS2C400HM1PCT	91637	7	9
MS9321-04	96906	7	23	RC20GF241J	81349	4	14	RS2C600HM1PCT	91637	7	10
MM10-152J	83777	10	39	RC20GF242J	81349	12	25	RW79UR499F	81349	4	12

SECTION IV. FEDERAL STOCK NUMBER AND REFERENCE NUMBER INDEX (Continued)

FEDERAL STOCK NUMBER				FEDERAL STOCK NUMBER				FEDERAL STOCK NUMBER			
FIGURE NUMBER		ITEM NUMBER		FIGURE NUMBER		ITEM NUMBER		FIGURE NUMBER		ITEM NUMBER	
REF NO	MFG CO	FIG NO.	ITEM NO	REF NO	MFG CO	FIG NO.	ITEM NO	REF NO	MFG CO	FIG NO.	ITEM NO.
SM7080BLACK	98291	10	19	1N3824A	81349	7	25	2N1309	81349	7	29
SM7080BLACK	98291	2	21	1N3824A	81349	8	21	2N1309	81349	8	23
SMT0804RED	98291	10	20	1N538	81349	11	9	2N336A	80131	12	39
SMT0804RED	98291	2	22	1N538	81349	13	31	2N336A	80131	4	38
SM110	11961	12	37	1N538	81349	3	11	235-0169	85604	10	42
SM110	11961	4	32	1N538	81349	5	28	235-0176	85604	2	38
SM510	11961	12	35	1N538	81349	8	18	242E1805	56289	3	
SM510	11961	4	35	1N821	81349	12	36	243E1015	56289	8	7
SV125	03877	12	38	1N821	81349	4	33	243E1205	56289	3	5
SV125	03877	4	34	1N968B	81349	7	26	247E3015	56289	13	27
TA15M02-5	84971	10	10	1N968B	81349	8	20	247E4015	56289	13	29
TA15M02-5	84971	2	12	100-1541	85604	10	40	247E5005	56289	13	28
TS1W562F	02985	12	15	100-1544	85604	2	41	267-17705	46859	8	5
TS1W572F	02985	4	10	1043-1C	72653	13	18	267-17729	46859	11	1
TS3	70309	6	24	1043-1C	72653	5	19	267-17729	46859	3	1
TS3	70309	7	27	115-1789	85604	4	13	267-17959	46859	9	28
TS3	70309	8	22	115-1789	85604	12	16	267-18103	46859	7	7
TS3WOR25H	02985	12	13	124-0178	85604	12	34	267-3053-1	46859	2	8
TSWOR33HPORM5PCT	02985	4	3	124-0178	85604	4	36	267-3053-4	46859	2	3
TY35M	59730	9	66	130-0264-6	85604	10	13	268-19204	46859	13	7
VAL3-152J	83777	4	11	130-0264-6	85604	2	15	268-19204	46859	5	7
VA13-751J	83777	12	12	1300C	88245	6	4	268-19221-4	46859	13	34
X663F10406W2	84411	12	9	14H013H01	46859	6	9	268-19221-4	46859	5	30
X663F10406W2	84411	4	9	1411B	88245	13	43	268-19232	46859	13	1
X663F20352W2	84411	12	10	142	59730	9	42	268-19232	46859	5	1
X663F20492W2	84411	12	7	15-140	71785	9	53	268-19265-1	46859	13	19
X663F20492W2	84411	4	7	192-1471-604	72619	13	23	268-19265-1	46859	5	20
X663F50392W2	84411	12	8	192AO45-147	72619	5	22	268-20825	46859	9	37
I 2 6	95987	10	6	192P10302	56289	4	8	268-20826	46859	9	20
1N1614	81349	11	8	2N1131A	80131	12	40	268-20834-2	46859	7	1
1N614	81349	3	10	2N1131A	80131	4	37	268-20834	46859	8	1
1N1616R	81349	11	10	2N1308	81349	11	13	268-20835	46859	5	9
1N1614R	81349	3	12	2N1308	81349	3	15	268-20836-1	46859	7	6
1N2808B	81349	11	7	2N1308	81349	7	28	268-20836-2	46859	6	22
1N2816B	81349	3	9	2N1308	81349	8	24	268-20836-2	46859	8	4
1N3018B	81349	7	24	2N1309	81349	11	14	268-20958	46859	13	24
1N3018B	81349	8	19	2N1309	81349	3	16	268-20958	46859	5	25

SECTION IV. FEDERAL STOCK NUMBER AND REFERENCE NUMBER INDEX (Continued)

FEDERAL STOCK NUMBER				FEDERAL STOCK NUMBER				FEDERAL STOCK NUMBER			
FIGURE NUMBER		ITEM NUMBER		FIGURE NUMBER		ITEM NUMBER		FIGURE NUMBER		ITEM NUMBER	
REF NO.	MFG CO.	FIG NO.	ITEM NO.	REF NO.	MFG CO.	FIG NO.	ITEM NO.	REF NO.	MFG CO.	FIG NO.	ITEM NO.
268-20959	46859	13	25	3067P1-201	80294	3	6	39-604-1475	72619	10	38
268-20980	46859	13	11	3067P1-202	80294	10	30	398-7572-2	46859	15	
268-21002	46859	9	51	3067P1-202	80294	2	31	398-7574	46859	15	1
268-21003	46859	9	49	31889	00779	9	64	40251	02735	10	41
268-21004-1	46859	9	2	330	71744	2	17	40251	02735	2	42
268-21004-2	46859	9	7	330	71744	5	24	41646	89110	5	40
268-21005	46859	9	48	330P10E3-8W	71450	8	9	41646	89110	9	65
268-21009	46859	9	52	330P13000HM3-8W	71450	7	12	4231	59730	9	29
268-21065-1	46859	10	25	330P13000HM3-8W	71450	8	10	43F7575AA1	01002	12	6
268-21065-2	46859	2	26	330P5000HM3-8W	71450	7	13	43F7576AA1	01002	12	5
268-21127	46859	6	12	330P5000HM3-8W	71450	8	8	43F7580AA1	01002	4	6
268-21138	46859	13	45	34142	00779	9	63	43F7938AA1	01002	12	2
268-21138	46859	5	23	345	71744	10	21	43F9095AA1	01002	4	1
268-21234	46859	9	19	345	71744	13	22	43F9121AA1	01002	4	5
268-21327-1	46859	9	58	368-41450	46859	6	1	461-4767	46859	13	46
268-21327-2	46859	9	61	368-41450-1	46859	6	2	461-4768	46859	13	47
268-21594	46859	9	8	368-41455-1	46859	9	47	461-4768	46859	5	38
268-21595	46859	9	31	368-41456-1	46859	10	11	461-4769	46859	5	39
268-21596	46859	9	43	368-41456-2	46859	2	13	53-9016-2402	91662	6	21
268-21597	46859	9	46	368-41523	46859	9	44	5801	78229	9	22
268-21598	46859	9	14	368-41687-1	46859	6	11	582440-9	00779	13	39
268-21605	46859	9	24	368-41746-1	46859	10	14	582573-1	00779	6	16
297-10295	46859	15	3	368-41746-2	46859	2	16	58371-3-4	78229	9	1
297-10296	46859	15	2	368-41802	46859	6	6	76F02BF151	24446	12	4
297-3281-1	46859	7	21	368-41802-1	46859	6	7	76F02BF151	24446	4	4
298-21233	46859	9	26	368-41808-1	46859	10	28	76F05EN271	24446	12	3
298-3519	46859	15	4	368-41809-1	46859	2	29	7602EN271	24446	4	3
298-5520	46859	15	8	368-42090	46859	9	13	76F02EN680	24446	12	1
3-582181-9	00779	9	18	368-42222	46859	9	25	76F02EN680	24446	4	2
3-582225-9	00779	9	17	368-42222-1	46859	9	27	80-6024-2100-00	95354	10	9
3-582440-9	00779	5	34	368-42242	46859	9	34	80-6024-2100-11	95354	2	11
3-8-3	75987	10	1	368-42333-1	46859	9		8573SS1032-7	06540	9	39
304CCT	71785	10	7	368-42537	46859	6	10	8576SS0632-7	06540	9	50
304CCT	71785	2	10	37TB5	81349	10	33	8591SS1032-7	06540	9	40
306CCT	71785	10	8	37TB5	81349	2	34	8597SS1032-7	06540	9	41
306CCT	71785	2	9	3792	44655	6	23	8752SS0832-7	06540	10	15
3067P1-201	80294	11	4	39-14-1475	72619	2	39	8752SS0832-7	06540	2	20

SECTION IV. FEDERAL STOCK NUMBER AND REFERENCE NUMBER INDEX (Continued)

FEDERAL STOCK NUMBER	FIGURE NUMBER	ITEM NUMBER	FEDERAL STOCK NUMBER	FIGURE NUMBER	ITEM NUMBER	FEDERAL STOCK NUMBER	FIGURE NUMBER	ITEM NUMBER
<u>REF. NO.</u>	<u>FIG. CO.</u>	<u>FIG. NO.</u>	<u>REF. NO.</u>	<u>FIG. CO.</u>	<u>FIG. NO.</u>	<u>REF. NO.</u>	<u>FIG. CO.</u>	<u>FIG. NO.</u>
87530E0832-7	06540	10 18						
87530E0832-7	06540	2 18						
9-160A46-3MOR2J	24681	12 14						
9W0021	46899	7 22						
907075	03743	9 23						
922488115-0	06540	6 19						
<u>LATEST FEDERAL STOCK NUMBER ASSIGNMENTS</u>								
<u>FEDERAL STOCK NUMBER</u>	<u>FIGURE NUMBER</u>	<u>ITEM NUMBER</u>						
6130-018-8560	2	30						
6240-683-0560	10	21						
6240-683-0560	13	22						

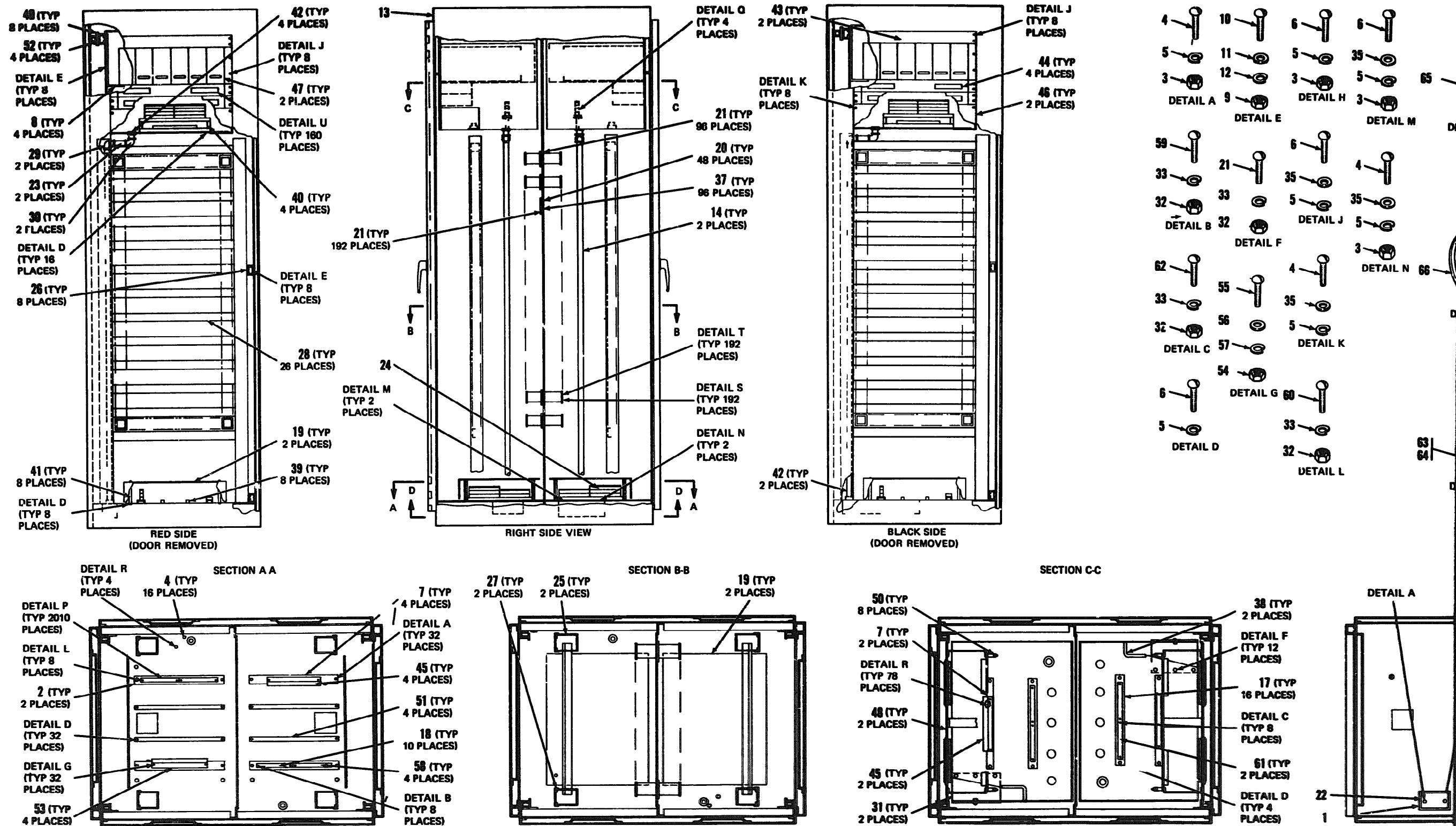


Figure 9. Red/Black Isolation Unit, 368-42333-1

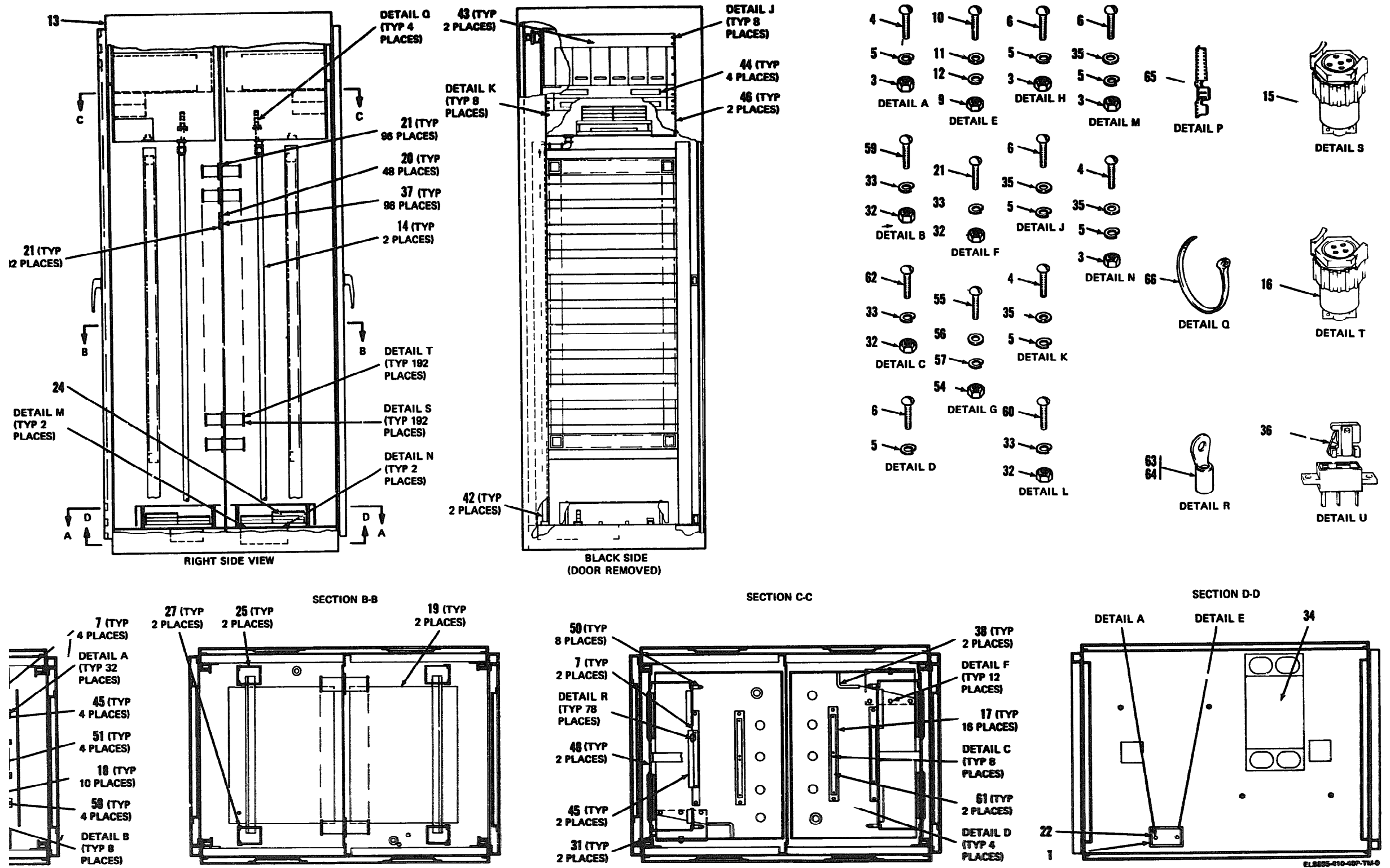


Figure 9. Red/Black Isolation Unit, 368-42333-1.

By Order of the Secretaries of the Army the Navy and the Air Force

CREIGHTON W ABRAMS
General, United States Army
Chief of Staff

Official

VERNE L. BOWERS
Major General, United States Army
The Adjutant General

RAYMOND J SCHNEIDER
Rear Admiral United States Navy
Commander Naval Electronic
Systems Command

Official

JACK R BENSON Colonel USAF
Director of Administration

GEORGE S BROWN General USAF
Chief of Staff

DISTRIBUTION

Active Army

CNGB (1)
 USASA (2)
 USASA (Pac) (1)
 USASAE (1)
 ACSC-E (2)
 ACSFOR (2)
 USAMB (10)
 AMG (1)
 TRADOC (1)
 LOGCOMD (2)
 OS Maj Comd (2)
 USARJ (2)
 USACOMZEUR (3)
 USAREUR (3)
 CINCPAC (3)
 USARPAC (2)
 TECOM (2)
 MICOM (1)
 USACC (5)
 USACC-PAC (2)
 USACC-EUR (5)
 USACC-SO (3)
 USACC-A (3)
 USACC SIG GP-T (3)
 USACC-CONUS (3)
 SATCOM (2)
 USACSA (4)
 USACDCEC (10)
 USASESS (3)

USAINTS (3)
 USASCS (5)
 7th & 8th Armies (4)
 Sig Bde (USACC) Korea (1)
 Sig Gp (USACC) Japan (1)
 Sig Gp (USACC) Taiwan (1)
 Army Depots (2) except
 ATAD (5)
 LBAD (5)
 SAAD (15)
 TOAD (10)
 USA Dep (2) except
 Pirmasens (10)
 Sig Dep (2)
 Sig Sec USA Dep (2)
 Sig FLDMS (1)
 USAERDAA (1)
 USAERDAW (1)
 Fort Carson (2)
 Ft Richardson (ECOM Ofc) (2)
 Units org under fol TOE
 (1 copy each)
 11-75
 11-85
 11-95
 11-158
 11-302
 29-134
 29-136

NG None

USAR. None

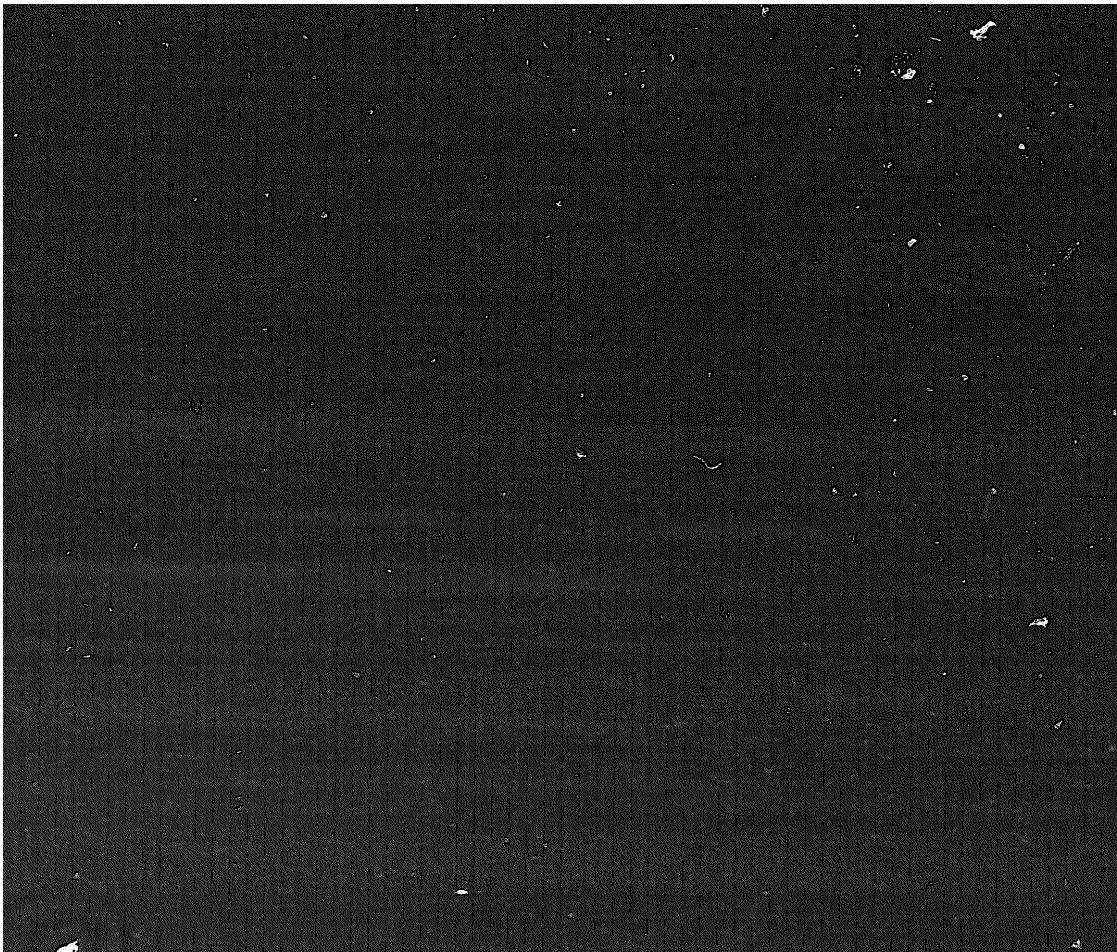
For explanation of abbreviations used, see AR 310-50.

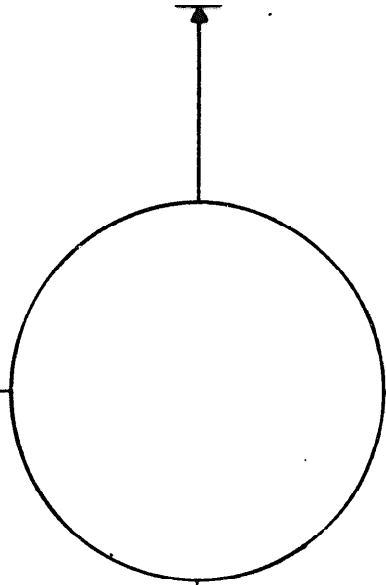
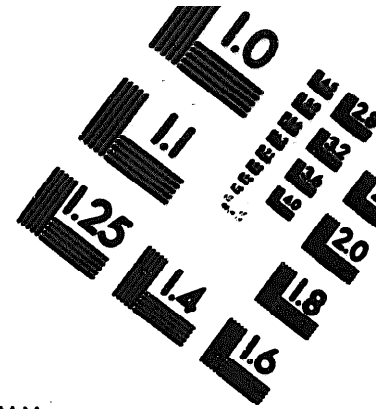
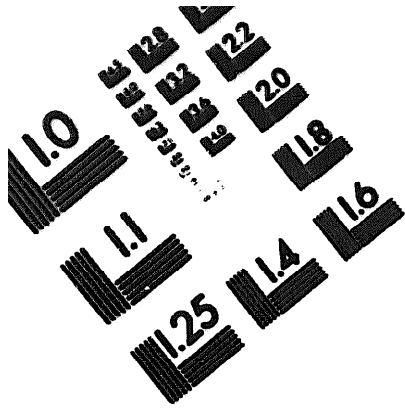
END

12-03-82

DATE







1.0 mm (e= .81 mm)

1.0 mm (e= .81 mm)

ABCDEFGHIJKLMN OPQRSTUVWXYZ 1234567890
 abcdefghijklmnopqrstuvwxyz \$%&/'%# 1/2 1/4 3/4 —+ x&@*

ABCDEFGHIJKLMN OPQRSTUVWXYZ 1234567890
 abcdefghijklmnopqrstuvwxyz \$%&/'%# 1/2 1/4 3/4 —+ x&@*

1.5 mm (e= 1.09 mm)

1.5 mm (e= 1.09 mm)

ABCDEFGHIJKLMN OPQRSTUVWXYZ 1234567890
 abcdefghijklmnopqrstuvwxyz \$%&/'%# 1/2 1/4 3/4 —+ x&@*

ABCDEFGHIJKLMN OPQRSTUVWXYZ 1234567890
 abcdefghijklmnopqrstuvwxyz \$%&/'%# 1/2 1/4 3/4 —+ x&@*

2.0 mm (e= 1.37 mm)

2.0 mm (e= 1.37 mm)

ABCDEFGHIJKLMN OPQRSTUVWXYZ
 abcdefghijklmnopqrstuvwxyz
 1234567890 \$%&/'%# 1/2 1/4 3/4 —+ x&@*

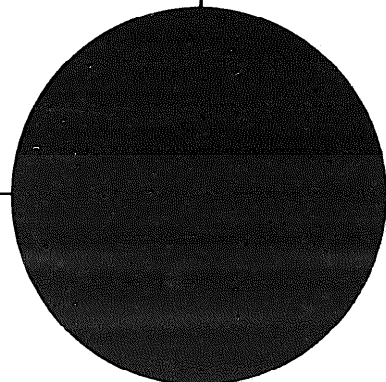
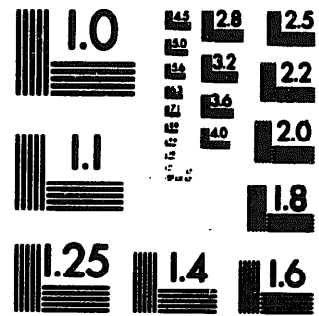
ABCDEFGHIJKLMN OPQRSTUVWXYZ
 abcdefghijklmnopqrstuvwxyz
 1234567890 \$%&/'%# 1/2 1/4 3/4 —+ x&@*

2.5 mm (e= 1.77 mm)

2.5 mm (e= 1.77 mm)

ABCDEFGHIJKLMN OPQRSTUVWXYZ
 abcdefghijklmnopqrstuvwxyz
 1234567890 \$%&/'%# 1/2 1/4 3/4 —+ x&@*

ABCDEFGHIJKLMN OPQRSTUVWXYZ
 abcdefghijklmnopqrstuvwxyz
 1234567890 \$%&/'%# 1/2 1/4 3/4 —+ x&@*



250 MM

